

THESE ARE NOT WORKING DETAILS, they have been produced solely for the purpose of making Local Authority Applications and do not form part of any CDM requirements. All details and Dimensions to be checked and verified on site BEFORE commencement. DO NOT SCALE.

RED LINE INDICATES BOUNDARY OF LICENSED AREA.

NOTE

CONSUMPTION OF ALCOHOL AND LICENSABLE ACTIVITIES TAKE PLACE ANYWHERE WITHIN THE PREMISES. THE POSITION OF ANY LOOSE FURNITURE IS SHOWN FOR DIAGRAMMATIC PURPOSES ONLY. THE LOCATION OF FIRE EQUIPMENT IS SHOWN ON THE DATE HEREOF BUT MAY BE MOVED WITH THE CONSENT OF THE FIRE OFFICER.

LEGEND

FIRE SIGNAGE
(EXACT LOCATION TO BE AGREED ON SITE)

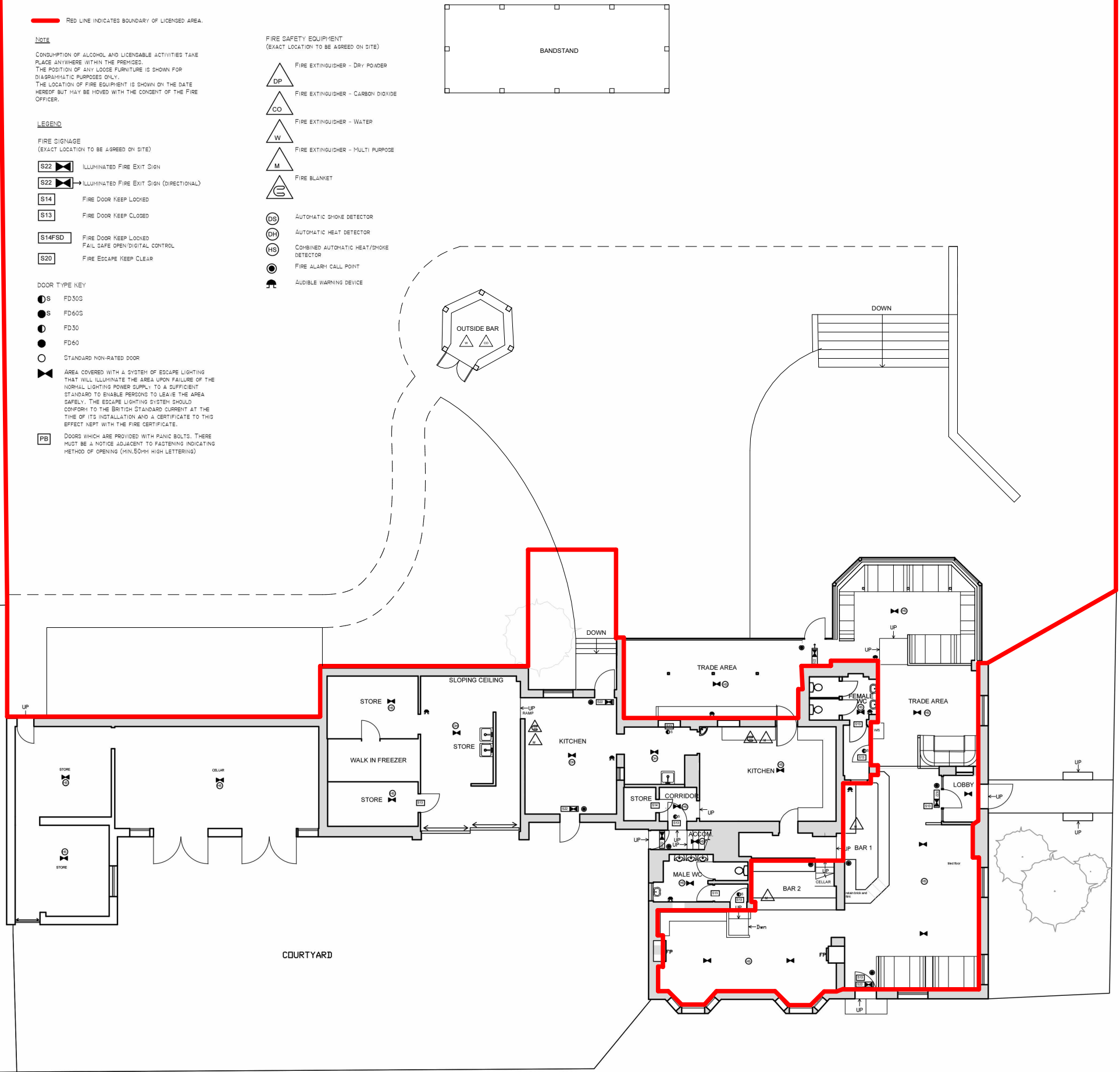
- S22 ILLUMINATED FIRE EXIT SIGN
S22 ILLUMINATED FIRE EXIT SIGN (DIRECTIONAL)
S14 FIRE DOOR KEEP LOCKED
S13 FIRE DOOR KEEP CLOSED
S14FSD FIRE DOOR KEEP LOCKED
FAIL SAFE OPEN/DIGITAL CONTROL
S20 FIRE ESCAPE KEEP CLEAR

DOOR TYPE KEY

- S FD30G
S FD60G
FD30
FD60
STANDARD NON-RATED DOOR
AREA COVERED WITH A SYSTEM OF ESCAPE LIGHTING THAT WILL ILLUMINATE THE AREA UPON FAILURE OF THE NORMAL LIGHTING POWER SUPPLY TO A SUFFICIENT STANDARD TO ENABLE PERSONS TO LEAVE THE AREA SAFELY. THE ESCAPE LIGHTING SYSTEM SHOULD CONFORM TO THE BRITISH STANDARD CURRENT AT THE TIME OF ITS INSTALLATION AND A CERTIFICATE TO THIS EFFECT KEPT WITH THE FIRE CERTIFICATE.
PB DOORS WHICH ARE PROVIDED WITH PANIC BOLTS. THERE MUST BE A NOTICE ADJACENT TO FASTENING INDICATING METHOD OF OPENING (MIN.50MM HIGH LETTERING)

FIRE SAFETY EQUIPMENT
(EXACT LOCATION TO BE AGREED ON SITE)

- DP FIRE EXTINGUISHER - DRY POWDER
CO FIRE EXTINGUISHER - CARBON DIOXIDE
W FIRE EXTINGUISHER - WATER
M FIRE EXTINGUISHER - MULTI PURPOSE
E FIRE BLANKET
DS AUTOMATIC SMOKE DETECTOR
DH AUTOMATIC HEAT DETECTOR
HS COMBINED AUTOMATIC HEAT/SMOKE DETECTOR
FIRE ALARM CALL POINT
AUDIBLE WARNING DEVICE



Client

KBS GROUNDWORKS & LANDSCAPING

Project

The Linden Tree Pub, 7 Out Northgate, Bury
Saint Edmunds IP33 1JQ

Title

Licensing Plan

Project N°

Drawing N°

Revision

0308 - 0103

Scale - unless otherwise stated

P02

Issued For

1 : 200

@ A3

PRELIMINARY



Bright Architecture Ltd
139 Southgate Street
Bury St Edmunds
Suffolk
IP33 2AF

t: 01284 245239
e:joe@brightarchitecture.co.uk