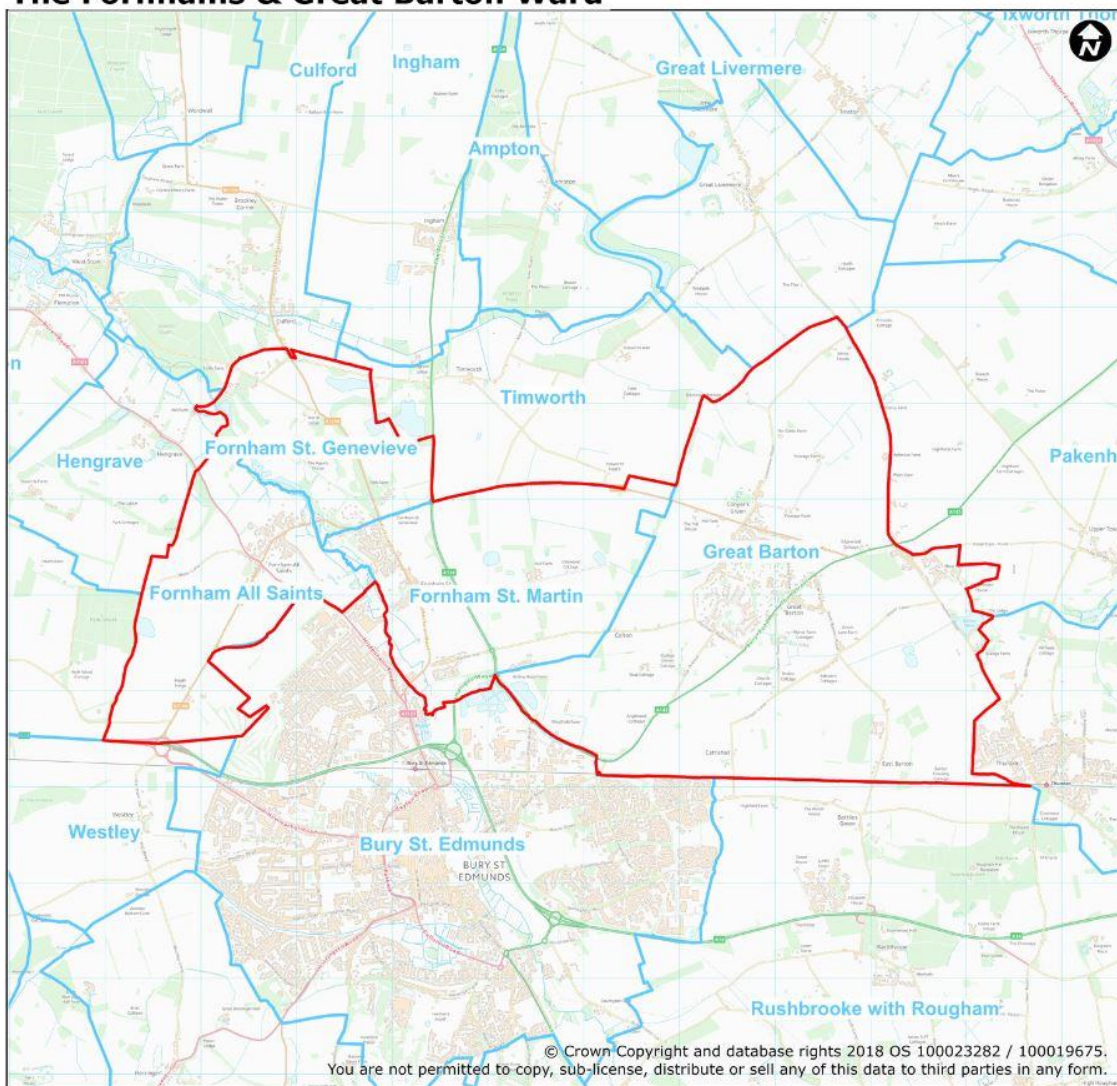


Ward report: The Fornhams & Great Barton ward

This report provides a snapshot of The Fornhams & Great Barton ward, using data that are available at Census Output Area or in some cases Lower Layer Super Output Area (LSOA) level. The number of datasets available at these levels is more limited than at higher levels e.g. district. This means that some datasets are only available in census years at this level and not for more recent years. Please note that due to the methodology used for rounding numbers, values will not always round to 100% when displayed to 1 decimal place.

For further statistical information, please contact the Policy Team on 01284 757634

The Fornhams & Great Barton Ward



People

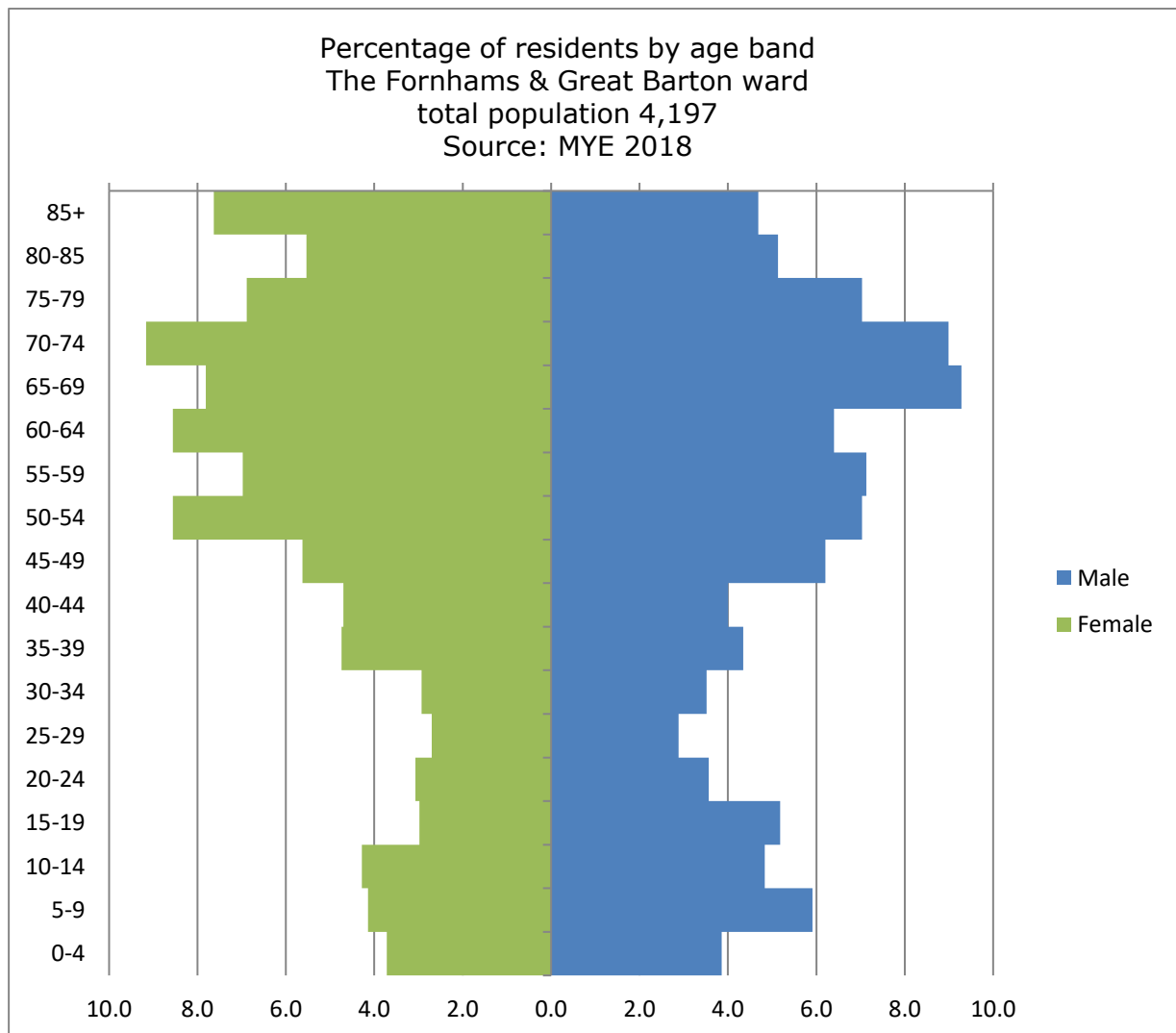
Population:

The Fornhams & Great Barton ward has a resident population of 4,197 persons. (Source: ONS Mid-Year Estimates (MYE) 2018)

Residential dwellings:

The number of residential dwellings in The Fornhams & Great Barton ward is 1,930. (Source: West Suffolk Local Land and Property Gazetteer. March 2019)

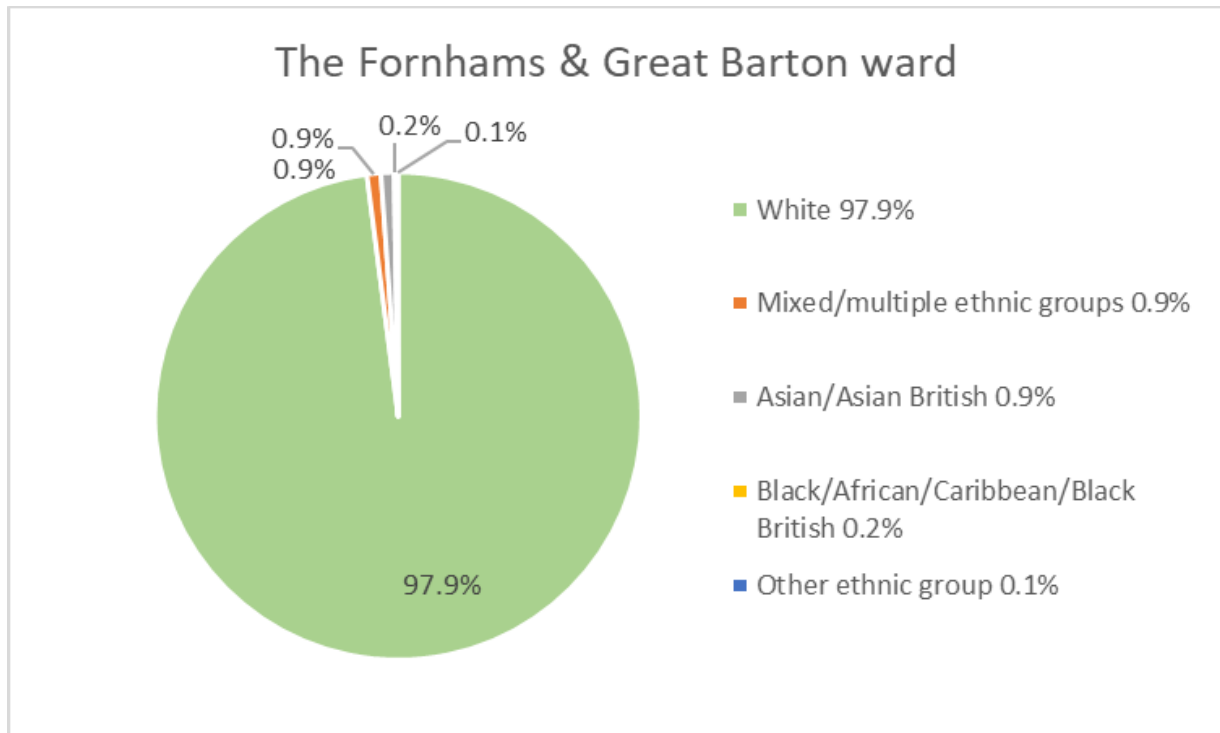
Age profile:



% of resident population	The Fornhams & Great Barton ward	West Suffolk	England
under 16	14.4%	19.1%	19.2%
16-64	49.5%	59.9%	62.6%
65 and over	36.1%	20.9%	18.2%

Ethnic profile:

The ethnic profile of The Fornhams & Great Barton ward is shown below. (Source: Census 2011)



Residents by ethnicity (%)	The Fornhams & Great Barton ward	West Suffolk	England
White	97.9%	94.6%	85.4%
Mixed/multiple ethnic groups	0.9%	1.8%	2.3%
Asian/Asian British	0.9%	1.8%	7.8%
Black/African/Caribbean/Black British	0.2%	1.3%	3.5%
Other ethnic group	0.1%	0.5%	1.0%

Religion:

The table below shows the religion stated by residents. (Source: Census 2011)

Religion %	The Fornhams & Great Barton ward	West Suffolk	England
Christian	73.2%	62.9%	59.4%
No religion/Religion not stated	25.9%	35.5%	31.9%
Other faiths	0.9%	1.6%	8.7%

Economy and skills

Businesses: (Source: Mint UK)

The Fornhams & Great Barton ward has a total of 609 businesses registered at Companies House (April 2019). 22 of these companies employ ten or more people. 54 companies have incorporation dates in the last year (April 2018 – April 2019) i.e. are businesses that have recently started up.

Educational attainment: (Source: Suffolk County Council 2017-18)

The percentage of pupils achieving a 'good level of development' in Early Years Foundation Stage and the percentage of pupils achieving at least grade 4 and grade 5 in English and Maths GCSE is shown below:

	The Fornhams & Great Barton ward	West Suffolk	Suffolk	England
Percentage of pupils who achieved a 'good level of development' in Early Years Foundation Stage	84.4%	71.0%	71.5%	71.5%
Percentage of pupils who achieved at least grade 4 in English and Maths GCSE	82.8%	63.4%	64.0%	64.4%
Percentage of pupils who achieved at least grade 5 in English and Maths GCSE	58.6%	39.4%	41.3%	43.5%

Further information about GCSE grading is available at:

<https://www.gov.uk/government/publications/gcse-new-grading-scale-factsheets>

Highest level of qualification held: (Source: Census 2011)

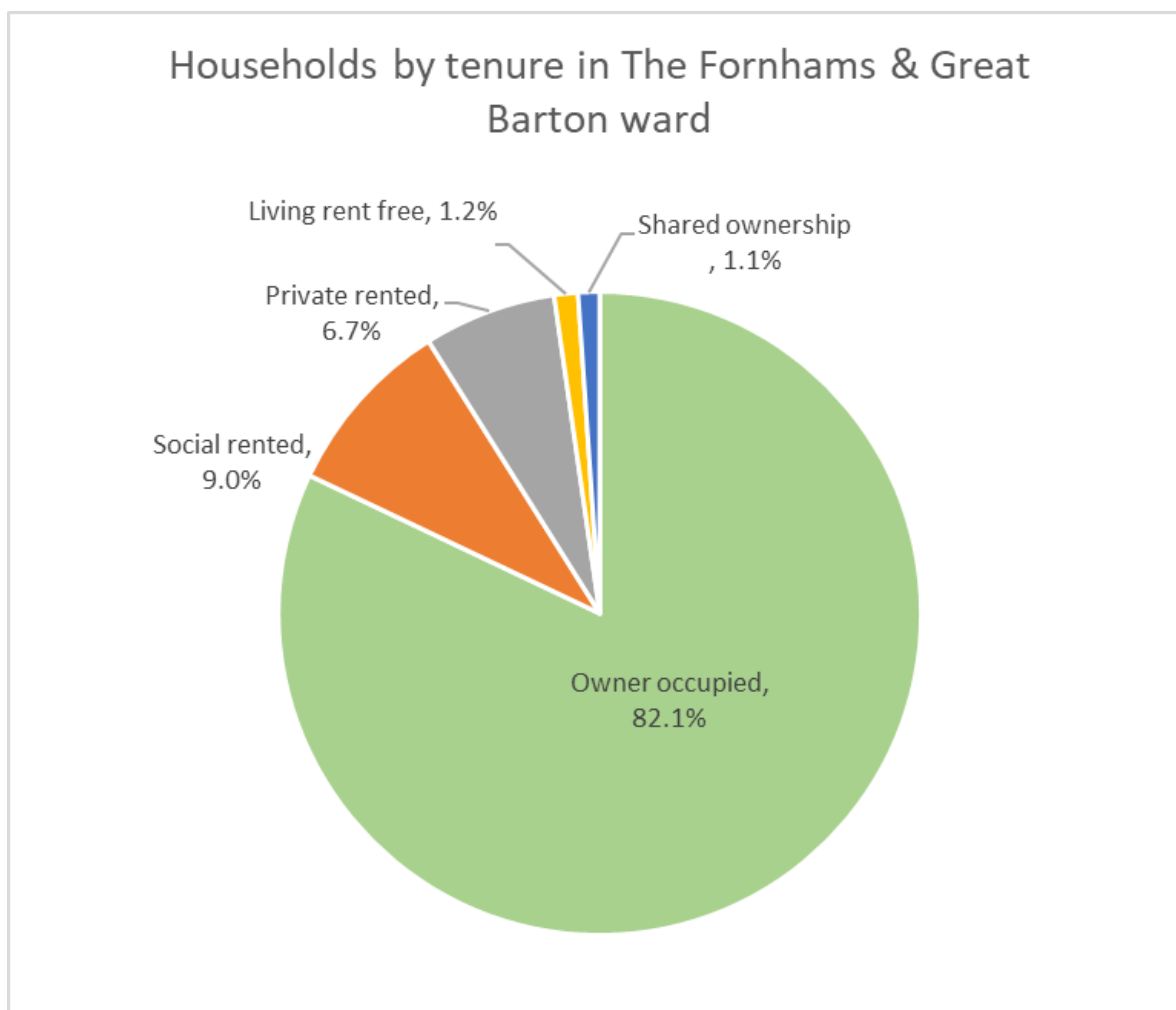
Highest level of qualification held -all usual residents aged 16 and over	The Fornhams & Great Barton ward	West Suffolk	England
No qualifications	20.4%	23.5%	22.5%
Level 1 qualifications	11.3%	14.2%	13.3%
Level 2 qualifications	15.9%	16.2%	15.2%
Apprenticeship	4.7%	4.0%	3.6%
Level 3 qualifications	11.4%	11.4%	12.4%
Level 4 qualifications and above	31.4%	22.7%	27.4%
Other qualifications	4.9%	8.0%	5.7%

Further information on qualification levels is available here:
<https://www.gov.uk/what-different-qualification-levels-mean/list-of-qualification-levels>

<https://www.gov.uk/what-different-qualification-levels-mean/list-of-qualification-levels>

Housing

Tenure: (Source: Census 2011)



Tenure (%)	The Fornhams & Great Barton ward	West Suffolk	England
Owner occupied	82.1%	62.9%	63.3%
Social rented	9.0%	15.5%	17.7%
Private rented	6.7%	18.3%	16.8%
Living rent free	1.2%	2.2%	1.3%
Shared ownership	1.1%	1.0%	0.8%

Average house prices (Source: HM Land Registry / ONS)

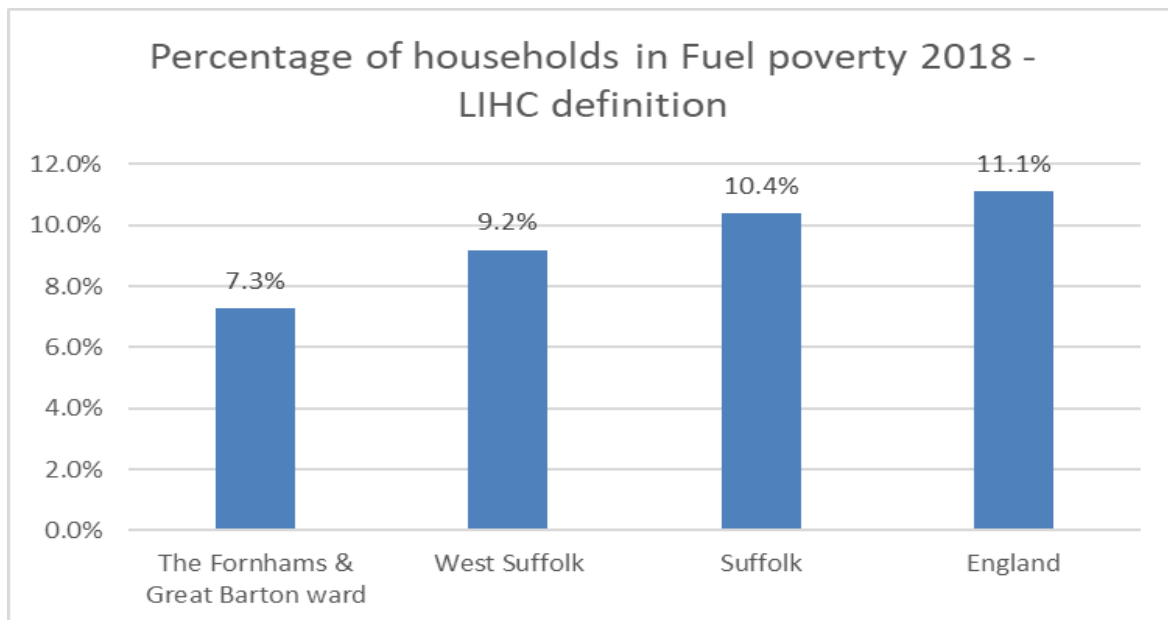
This table shows the median prices paid when homes were sold in the ward; how they compare to other areas; and how they have changed over time.

The data for Wards are shown as a range in median prices paid by the Lower Layer Super Output Areas (LSOAs) that make up the Wards, this is because data are not yet available at West Suffolk ward level.

Note: The figures for 2013 relate to the LSOAs that now make up the West Suffolk wards.

Area	Median house price paid - Sept 2013	Median house price paid - Sept 2018	No. of LSOAs in Ward
The Fornhams & Great Barton ward	£257,500 - £352,500	£349,995 - £427,495	2
Forest Heath	£155,000	£220,000	
St Edmundsbury	£187,500	£277,000	
Suffolk	£168,000	£238,000	
East region	£197,000	£283,000	
England	£185,000	£239,000	

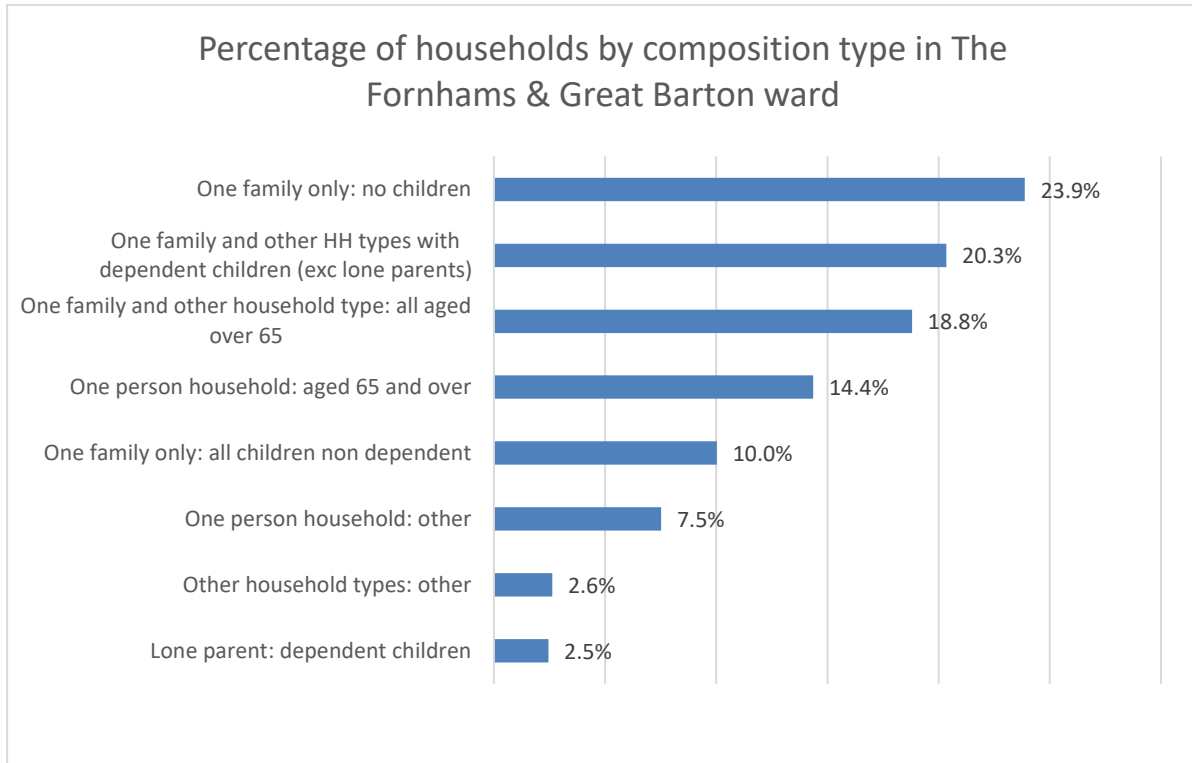
Fuel poverty: (source: Dept. for Business, Energy and Industrial Strategy. 2018 report with 2016 data. Data by LSOA)



Fuel poverty in England is measured using the Government's Low Income High Cost definition (LIHC), which considers a household to be in fuel poverty if: they have required fuel costs that are above average and were they to spend that amount they would be left with residual income below the poverty line.

Families and communities

Household composition: (source: Census 2011)



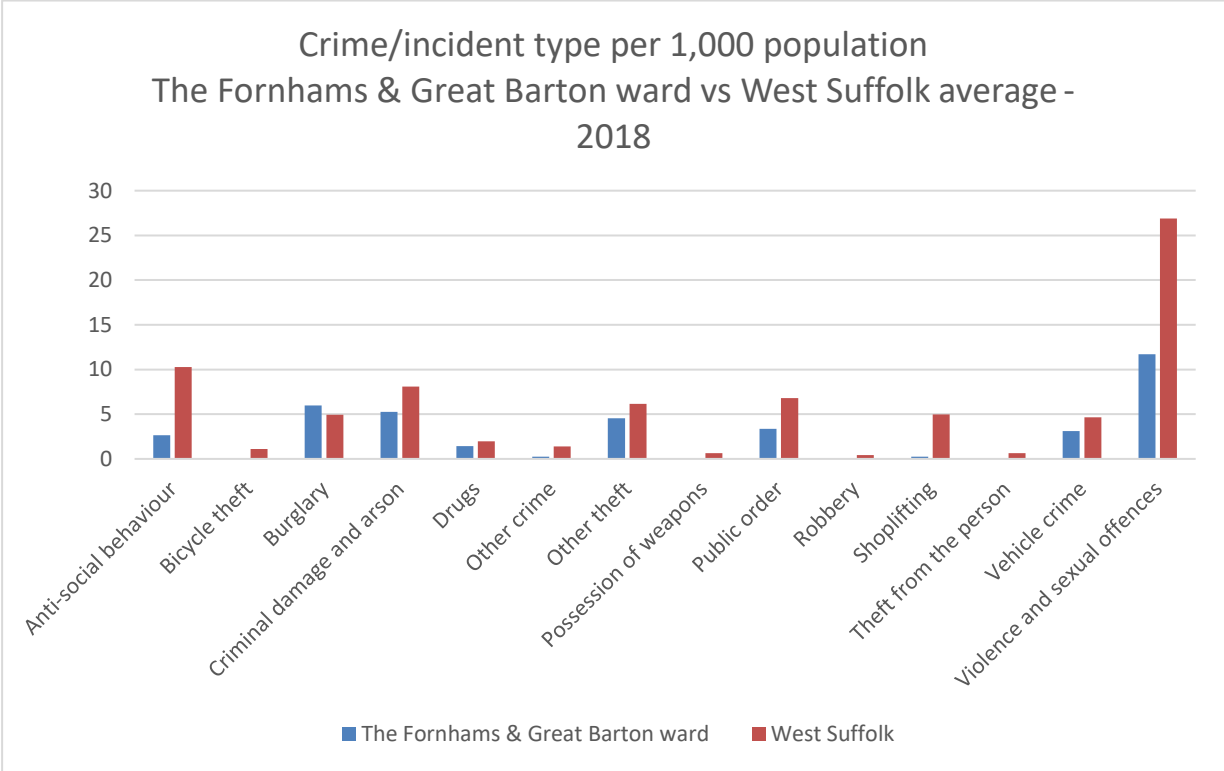
% of households	The Fornhams & Great Barton ward	West Suffolk	England
Lone parent: dependent children	2.5%	5.9%	7.1%
Other household types: other	2.6%	4.2%	5.1%
One person household: other	7.5%	14.9%	17.9%
One family only: all children non dependent	10.0%	8.6%	9.6%
One person household: aged 65 and over	14.4%	12.3%	12.4%
One family and other household type: all aged over 65	18.8%	10.3%	8.4%
One family and other HH types with dependent children (exc. lone parents)	20.3%	22.6%	22.0%
One family only: no children	23.9%	21.1%	17.6%
Number of households with dependent children	400		
% households with dependent children	23%	29%	29%

Crime and Anti-social behaviour (ASB): (Source: Police data. Jan – Dec 2018)

Note all data are per 1,000 head of population

The total number of crimes/incidents, including ASB, for The Fornhams & Great Barton ward was 38.49 per 1,000 population.

	The Fornhams & Great Barton ward	West Suffolk	Suffolk	England
Anti-social behaviour	2.63	10.28	11.15	23.04
Bicycle theft	0.00	1.10	1.47	1.62
Burglary	5.98	4.93	5.37	7.21
Criminal damage and arson	5.26	8.08	8.56	9.36
Drugs	1.43	1.95	1.60	2.31
Other crime	0.24	1.39	1.37	1.66
Other theft	4.54	6.15	6.21	9.02
Possession of weapons	0.00	0.62	0.59	0.76
Public order	3.35	6.80	6.64	7.15
Robbery	0.00	0.43	0.61	1.41
Shoplifting	0.24	4.97	5.44	6.13
Theft from the person	0.00	0.66	0.73	1.73
Vehicle crime	3.11	4.65	4.74	7.92
Violence and sexual offences	11.71	26.87	27.56	28.89
All crimes/incidents	38.49	78.89	82.03	108.21



Health and lifestyle

Health:

The table below shows how the residents of The Fornhams & Great Barton ward regard their individual level of health.

	Very good health	Good health	Fair health	Bad health	Very bad health
The Fornhams & Great Barton ward	45.3%	36.1%	14.4%	3.3%	0.9%
West Suffolk	47.6%	35.6%	12.5%	3.4%	0.9%
England	47.2%	34.2%	13.1%	4.2%	1.2%

The Fornhams & Great Barton ward ranks 28 out of the 43 wards of West Suffolk for the percentage of residents stating that they are in 'very good health' (with a ranking of 1 being the highest percentage of residents who state that they are in 'very good health').

Disability:

The table below shows the percentage of residents of The Fornhams & Great Barton ward who consider their day-to-day activities limited because of a health problem or disability which has lasted, or is expected to last, at least 12 months.

	Day-to-day activities limited a lot	Day-to-day activities limited a little	Day-to-day activities not limited
The Fornhams & Great Barton ward	8.4%	11.3%	80.2%
West Suffolk	7.0%	9.0%	84.1%
England	8.3%	9.3%	82.4%

The Fornhams & Great Barton ward ranks 5 out of the 43 wards in West Suffolk for residents who consider they have a limiting long-term illness or disability that limits their daily activities a little or a lot (with a ranking of 1 being the highest percentage of residents who consider they have a limiting long-term illness or disability).