

Census 2021 – West Suffolk data summary

Population, migration, veterans, ethnicity, nationality, language and religion. May 2023

If you are unable to view or access any parts of this document, please contact: policy@westsuffolk.gov.uk

About this document

- This document summarises the Census 2021 data that have so far been released, at the West Suffolk level. More information and analysis tools from the Office for National Statistics (ONS) and Suffolk-level summaries by Suffolk County Council (SCC) are available at: [Healthy Suffolk – Census in Suffolk](#)
- The maps in this report were taken directly from the above analysis by SCC and this report follows much of the structure of SCC's summary but replicated at the district level. We are grateful for SCC colleagues' work in this area.
- Further summaries of West Suffolk data will be issued as more data is released.

Contents

About this document	2
Contents.....	3
Glossary of terms used	5
Population	6
Population 2001, 2011 and 2021	6
Population by age band.....	7
Population by year of age 2011 and 2021	8
Population pyramid.....	9
Population density.....	10
Legal partnership status.....	11
Living arrangements.....	12
Household composition	14
Household size	16
Households by deprivation dimension	18
Number of usual residents in households and communal establishments	21
Migration	22
Age of arrival in UK	22
Country of birth	24
Detailed country of birth.....	26
Length of residence	30
Non-UK short term residents.....	32
Passports held	33
Year of arrival in UK	35

UK armed forces veteran data	36
UK armed forces veteran data – household	38
UK armed forces veteran data – communal establishment	40
National identity	41
Religion	42
Household language	45
Main language	49
Proficiency in English language	52
Ethnic group.....	55
Ethnic group -USVF	59

Glossary of terms used

OA denotes 'Output Area'. This is the smallest geography for which census data are released.

There are **587 output areas** in West Suffolk in 2021, with an average usual resident population of just over 300 people.

LSOA denotes 'lower super output area'. All data available at OA level are also available for LSOAs.

There are 107 LSOAs in West Suffolk, with an average usual resident population of just under 1,700 people.

MSOA denotes 'middle super output area'. There are **21 MSOAs in West Suffolk**, with an average usual resident population of just under 8,500 people.

LTLA denotes 'lower tier local authority' (district and borough council areas).

Please note that US military personnel and dependents **are included** in the results for West Suffolk if they were in the district on Census night.

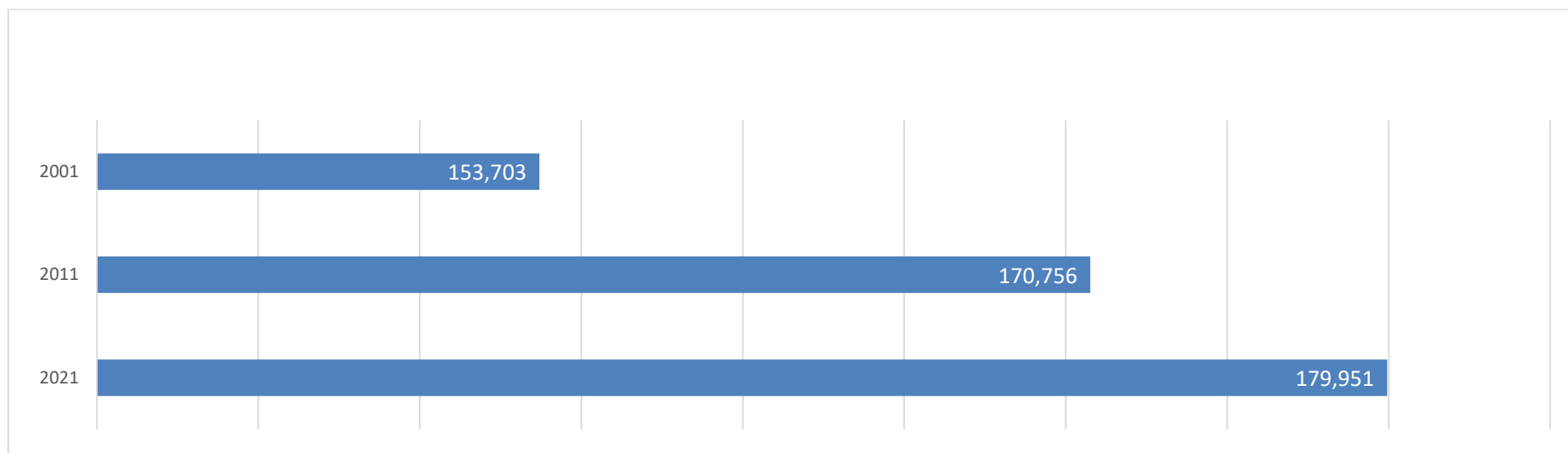
All data used in this paper were sourced from the 2021, 2011 and 2001 ONS Census outputs. Some total counts may differ slightly.

Population

Population 2001, 2011 and 2021

- On the day of the Census 2021, the usual resident population of West Suffolk is estimated at 179,951.
- This is an increase of 9,195 (5.3 per cent) since the 2011 census.
- Since the 2001 census, the population of West Suffolk has increased by just over 26,240 people (17.1 per cent), approximately the current population of Brandon and Newmarket combined.

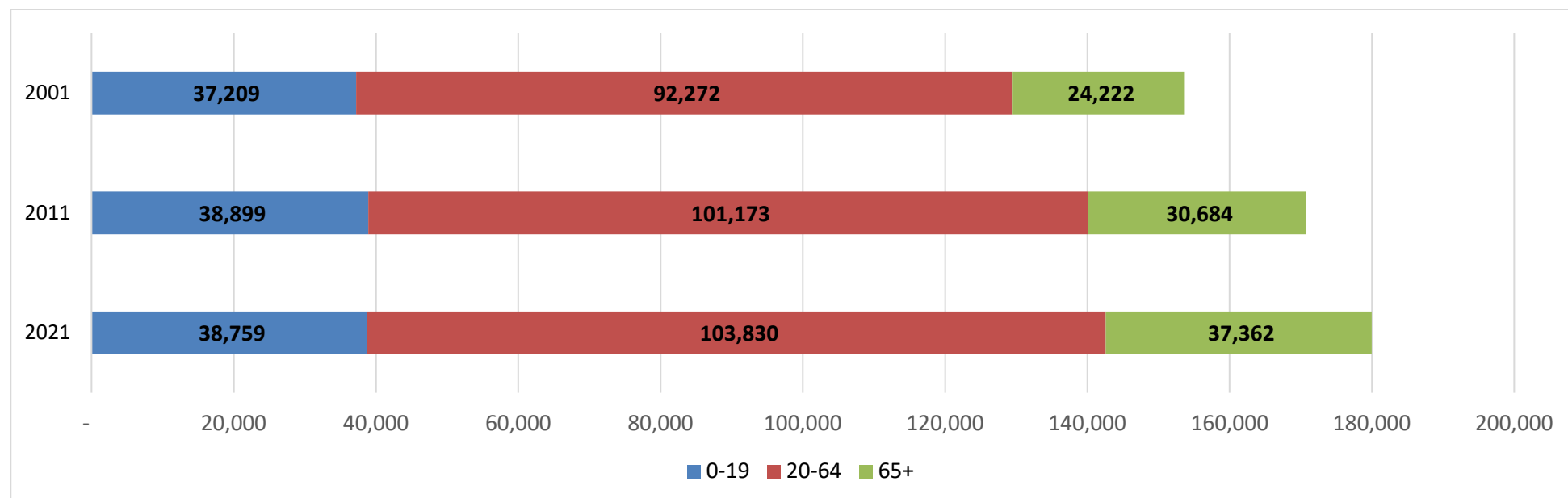
Chart 1. All usual residents in West Suffolk: comparison of recent census estimates



Population by age band

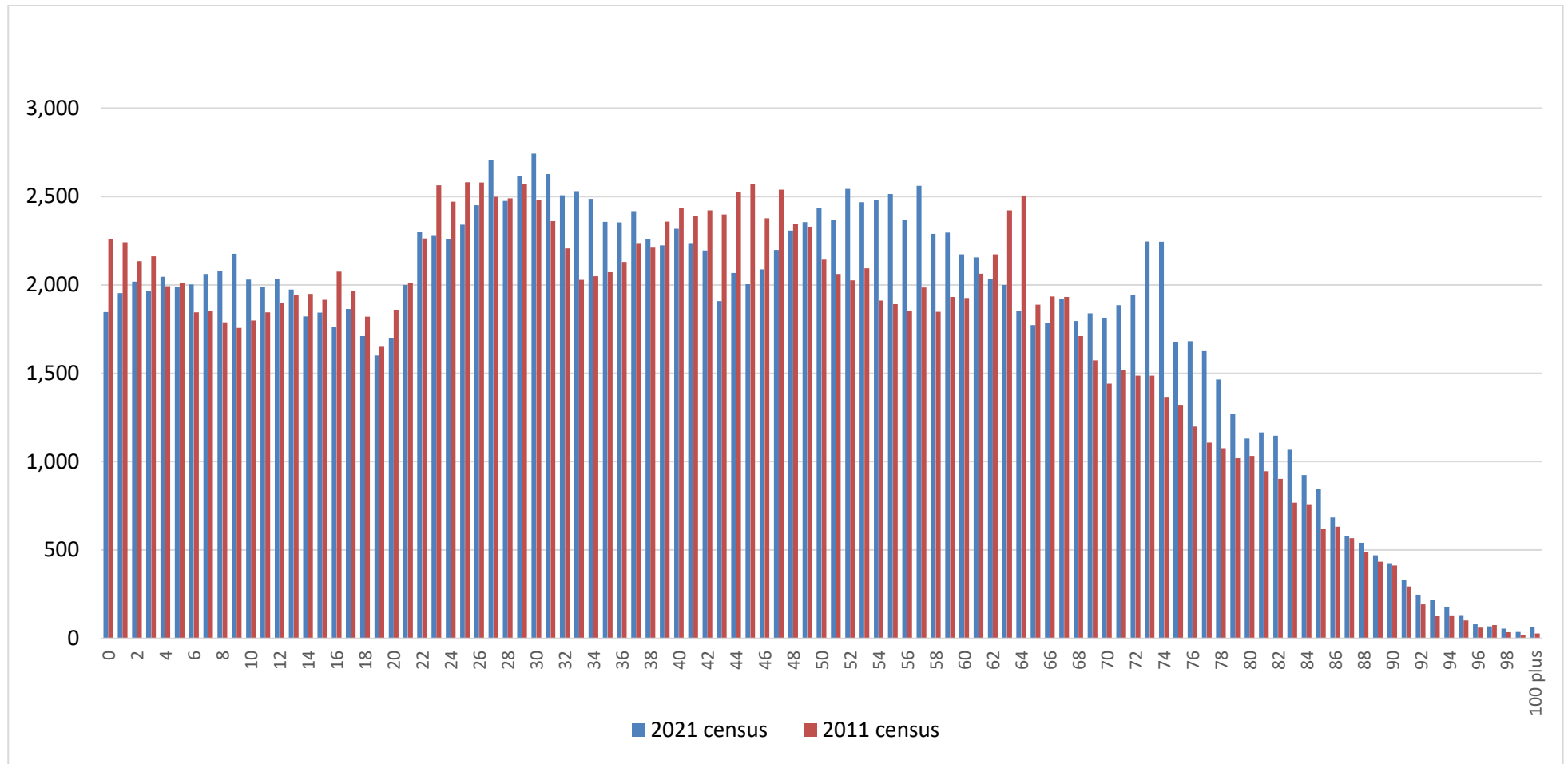
- The 2021 census shows that the population of children and young people below the age of 20 in West Suffolk has fallen by around 140 since 2011, a 0.4 per cent decrease.
- The working age population (20 to 64 in this case) has increased by 2.6 per cent, with just over 2,650 more people in this age group compared to ten years ago.
- The West Suffolk population aged 65 and over has risen considerably over the past decade. There are now 6,678 more residents in the county aged 65 and over, an increase of 21.8 per cent. The 65+ population of West Suffolk is 54.2 per cent higher in 2021 than it was in 2001.

Chart 2. All usual residents by broad age bands in West Suffolk: comparison of recent census estimates



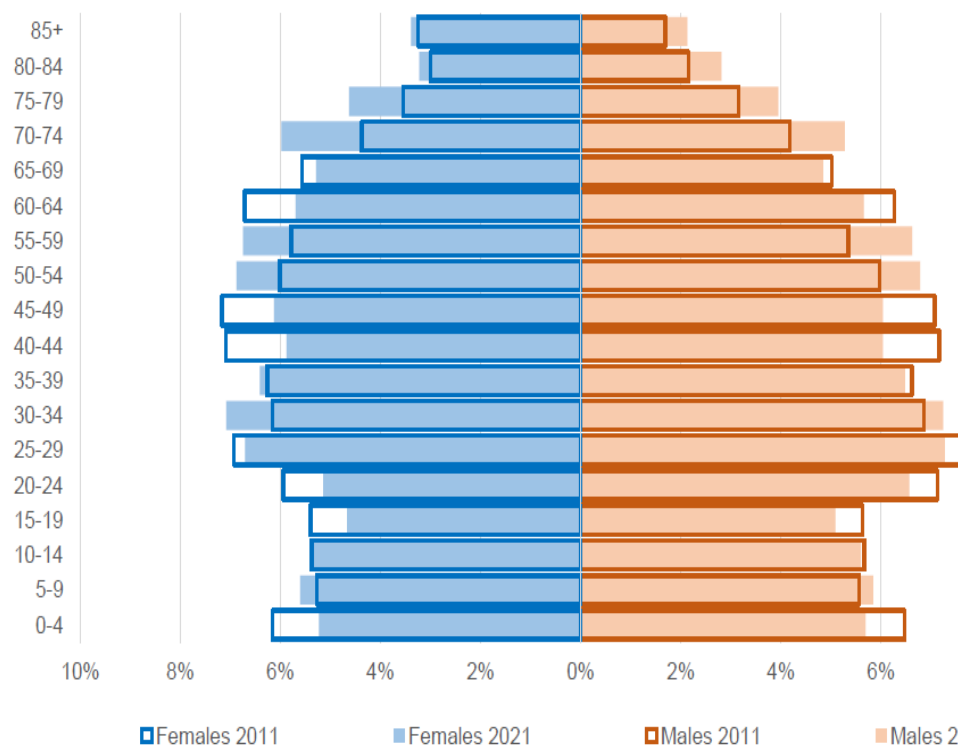
Population by year of age 2011 and 2021

Chart 3. All usual residents by single year of age: 2011 and 2021 censuses



Population pyramid

Chart 4: All usual residents by 5-year age band in West Suffolk by gender, 2011 and 2021 censuses



- The age pyramid shows that West Suffolk’s overall population has aged from 2011 to 2021.
- Some larger age cohorts have a clear impact on the age pyramid as time passes by. For example, the 40-49 year old cohort accounted for among the highest percentages of the overall West Suffolk population in 2011, while in 2021 this cohort is now impacting on the 50 - 59 age group. Meanwhile the 40 - 49 age group now accounts for a much smaller proportion of residents in the county.
- West Suffolk has a more traditionally pyramid shaped chart than some other districts in Suffolk, with a larger proportion of working-age people and children, something that is likely to be influenced by the presence of the US military in the district.

Population density

Table 1: Population per square kilometre, 2011 and 2021 censuses

	2011	2021	Change	Percentage change (%)
West Suffolk	165.0	173.9	8.9	5.4%
Suffolk	191.6	200.2	8.6	4.5%
England and Wales	371.3	394.6	23.3	6.3%

- There are around 174 usual residents per square kilometre in West Suffolk, less than half the England and Wales average.
- There are around 8.9 more usual residents per square kilometre in 2021 than there were in 2011, an increase of 5.4 per cent.

Legal partnership status

Table 2: Usual resident population by legal partnership status, 2021 census. No comparable data from 2011

	West Suffolk		Suffolk		England and Wales	
	Number	Percentage (%)	Number	Percentage (%)	Number	Percentage (%)
Total: All usual residents aged 16 and over	148,127	100.0%	630,359	100.0%	48,566,373	100.0%
Never married and never registered a civil partnership	49,197	33.2%	202,397	32.1%	18,401,778	37.9%
Married or in a registered civil partnership: Married: opposite sex	70,046	47.3%	300,949	47.7%	21,466,221	44.2%
Married or in a registered civil partnership: Married: same sex	402	0.3%	1,542	0.2%	134,271	0.3%
Married or in a registered civil partnership: In a registered civil partnership: opposite sex	70	0.0%	396	0.1%	35,797	0.1%
Married or in a registered civil partnership: In a registered civil partnership: same sex	177	0.1%	967	0.2%	66,812	0.1%
Separated, but still legally married or still legally in a civil partnership: Separated but still married	3,549	2.4%	14,360	2.3%	1,078,052	2.2%
Separated, but still legally married or still legally in a registered civil partnership: Separated but in a registered civil partnership	14	0.0%	87	0.0%	7,935	0.0%
Divorced or civil partnership dissolved: Divorced	15,230	10.3%	65,549	10.4%	4,412,518	9.1%
Divorced or civil partnership dissolved: Formerly in a civil partnership now legally dissolved	33	0.0%	146	0.0%	11,828	0.0%
Widowed or surviving civil partnership partner: Widowed	9,390	6.3%	43,903	7.0%	2,966,923	6.1%
Widowed or surviving civil partnership partner: Surviving partner form civil partnership	19	0.0%	63	0.0%	4,238	0.0%

Living arrangements

The 'living arrangements' classification combines responses to the question on marital and civil partnership status with information about whether or not a person is living in a couple. This topic is only applicable to people in households (for example, not those living in communal establishments). Living arrangements differs from marital and civil partnership status because cohabiting takes priority over other categories. For example, if a person is divorced and cohabiting, then in results for living arrangements they are classified as cohabiting.

Table 3: Usual resident population by living arrangements, 2021 census.

	West Suffolk		Suffolk		England and Wales	
	Number	Percentage (%)	Number	Percentage (%)	Number	Percentage (%)
Total: All usual residents	143,770	100.0%	618,798	100.0%	47,559,763	100.0%
Living in a couple	89,828	62.5%	387,684	62.7%	27,503,868	57.8%
Living in a couple: Married or in a civil partnership	68,316	47.5%	294,962	47.7%	20,762,909	43.7%
Living in a couple: Married or in a civil partnership: Opposite sex couple	67,850	47.2%	292,918	47.3%	20,604,698	43.3%
Living in a couple: Married or in a civil partnership: Same sex couple	466	0.3%	2,044	0.3%	158,211	0.3%
Living in a couple: Separated, but still married or in a civil partnership	142	0.1%	564	0.1%	47,328	0.1%
Living in a couple: Cohabiting	21,370	14.9%	92,158	14.9%	6,693,631	14.1%
Living in a couple: Cohabiting: Opposite sex couple	20,542	14.3%	88,590	14.3%	6,375,637	13.4%
Living in a couple: Cohabiting: Same sex couple	828	0.6%	3,568	0.6%	317,994	0.7%
Not living in a couple	53,942	37.5%	231,114	37.3%	20,055,895	42.2%
Not living in a couple: Single (never married and never registered a same-sex civil partnership)	30,896	21.5%	131,976	21.3%	12,681,906	26.7%
Not living in a couple: Married or in a registered civil partnership	1,540	1.1%	5,509	0.9%	652,734	1.4%

	West Suffolk		Suffolk		England and Wales	
	Number	Percentage (%)	Number	Percentage (%)	Number	Percentage (%)
Not living in a couple: Separated (including those who are married and those who are in civil partnerships)	2,782	1.9%	11,273	1.8%	884,926	1.9%
Not living in a couple: Divorced or formerly in a civil partnership which is now legally dissolved	10,458	7.3%	43,714	7.1%	3,159,113	6.6%
Not living in a couple: Widowed or surviving partner from a civil partnership	8,266	5.7%	38,642	6.2%	2,677,216	5.6%

Household composition

Table 4: Count of households in West Suffolk and Suffolk by composition, 2011 and 2021 censuses, and percentage (%) change

	West Suffolk 2011		West Suffolk 2021		Suffolk 2011		Suffolk 2021		West Suffolk	Suffolk
	Number	%	Number	%	Number	%	Number	%	% change	% change
One person	19,327		25,490		90,013		103,942		31.9%	15.5%
Aged 66 and over	8,750	12.3%	10,485	13.3%	42,599	13.7%	49,382	14.8%	19.8%	15.9%
Other	10,577	14.9%	15,005	19.1%	47,414	15.3%	54,560	16.4%	41.9%	15.1%
Single family	47,187		49,592		204,457		214,729			
All aged 66 and over	7,057	9.9%	8,593	10.9%	33,508	10.8%	41,700	12.5%	21.8%	24.4%
Married or civil partnership couple: No children	10,809	15.2%	9,605	12.2%	46,717	15.0%	40,830	12.2%	-11.1%	-12.6%
Married or civil partnership couple: Dependent children	11,701	16.4%	11,206	14.2%	47,911	15.4%	43,325	13.0%	-4.2%	-9.6%
Married or civil partnership couple: All children non-dependent	3,689	5.2%	3,849	4.9%	16,745	5.4%	18,017	5.4%	4.3%	7.6%
Cohabiting couple family: No children	4,245	6.0%	5,115	6.5%	17,097	5.5%	20,792	6.2%	20.5%	21.6%
Cohabiting couple family: With dependent children	2,996	4.2%	3,504	4.4%	13,501	4.3%	15,907	4.8%	17.0%	17.8%
Cohabiting couple family: All children non-dependent	363	0.5%	534	0.7%	1,544	0.5%	2,449	0.7%	47.1%	58.6%
Lone parent family: With dependent children	4,234	5.9%	4,356	5.5%	18,309	5.9%	18,880	5.7%	2.9%	3.1%
Lone parent family: All children non-dependent	2,093	2.9%	2,454	3.1%	9,125	2.0%	11,376	3.4%	17.2%	24.7%

	West Suffolk 2011		West Suffolk 2021		Suffolk 2011		Suffolk 2021		West Suffolk	Suffolk
	Number	%	Number	%	Number	%	Number	%	% change	% change
Other single family household		0.0%	377	0.5%		0.0%	1,453	0.4%		
Multiple family	4,664		3,664		16,275		14,871			
With dependent children	1,405	2.0%	1,308	1.7%	5,449	1.8%	5,797	1.7%	-6.9%	6.4%
Other, including all full-time students and all aged 66 years and over	3,259	4.6%	2,356	3.0%	10,826	3.5%	9,074	2.7%	-27.7%	-16.2%
Total: all households	71,178	100%	78,746	100%	310,745	100%	333,542	100%	10.6%	7.3%

- The number of households in West Suffolk has increased by 7,568 (10.6 per cent) from the 2011 census to the 2021 census.
- Single person households have increased by 31.9 per cent overall, with a larger proportional increase in households containing one person 'other' residents, **please note this is not of retirement age**. In 2011, the figure presented is for 65 years and over, while in 2021 it is 66 years and over. This reflects the increases to state pension age.
- Married or civil partnership couples with no children or dependent children have declined over the last decade. This is partly due to the ageing population but also the rise in cohabiting couple families.
- Overall, married or civil partnership couple households have declined by 1,539 (5.9 per cent), while cohabiting couples have increased by 1,549 (20.4 per cent) and lone parent households have increased by 483 (7.6 per cent).
- The number of households with non-dependent children has increased by 692 (11.3 per cent) in the past decade.
- Households containing only a person or people aged 66 and over have increased by just over a fifth since 2011, with 3,270 more such households in West Suffolk in 2021.

Household size

Table 5: Count of households in West Suffolk by size, 2011 and 2021 censuses, and percentage change in Suffolk and England and Wales

Household size	West Suffolk				Suffolk	England and Wales
	2011	2021	Change	Percentage change (%)	Percentage change (%)	Percentage change (%)
1 person in household	19,327	25,490	6,163	31.9%	15.5%	5.9%
2 people in household	27,425	28,502	1,077	3.9%	5.2%	5.7%
3 people in household	11,176	11,494	318	2.8%	6.4%	8.6%
4 people in household	9,188	9,288	100	1.1%	0.0%	5.0%
5 people in household	3,018	2,895	123	-4.1%	-3.5%	2.5%
6 or more people in household	1,044	1,077	33	3.2%	3.9%	10.5%
Total	71,178	78,746	7,568	10.6%	7.3%	6.1%

There are over 6,000 more single person households in West Suffolk in 2021 than there were in 2011, an increase of 31.9 per cent. Single person households account for more than 80 per cent of the total increase in households in West Suffolk during this period.

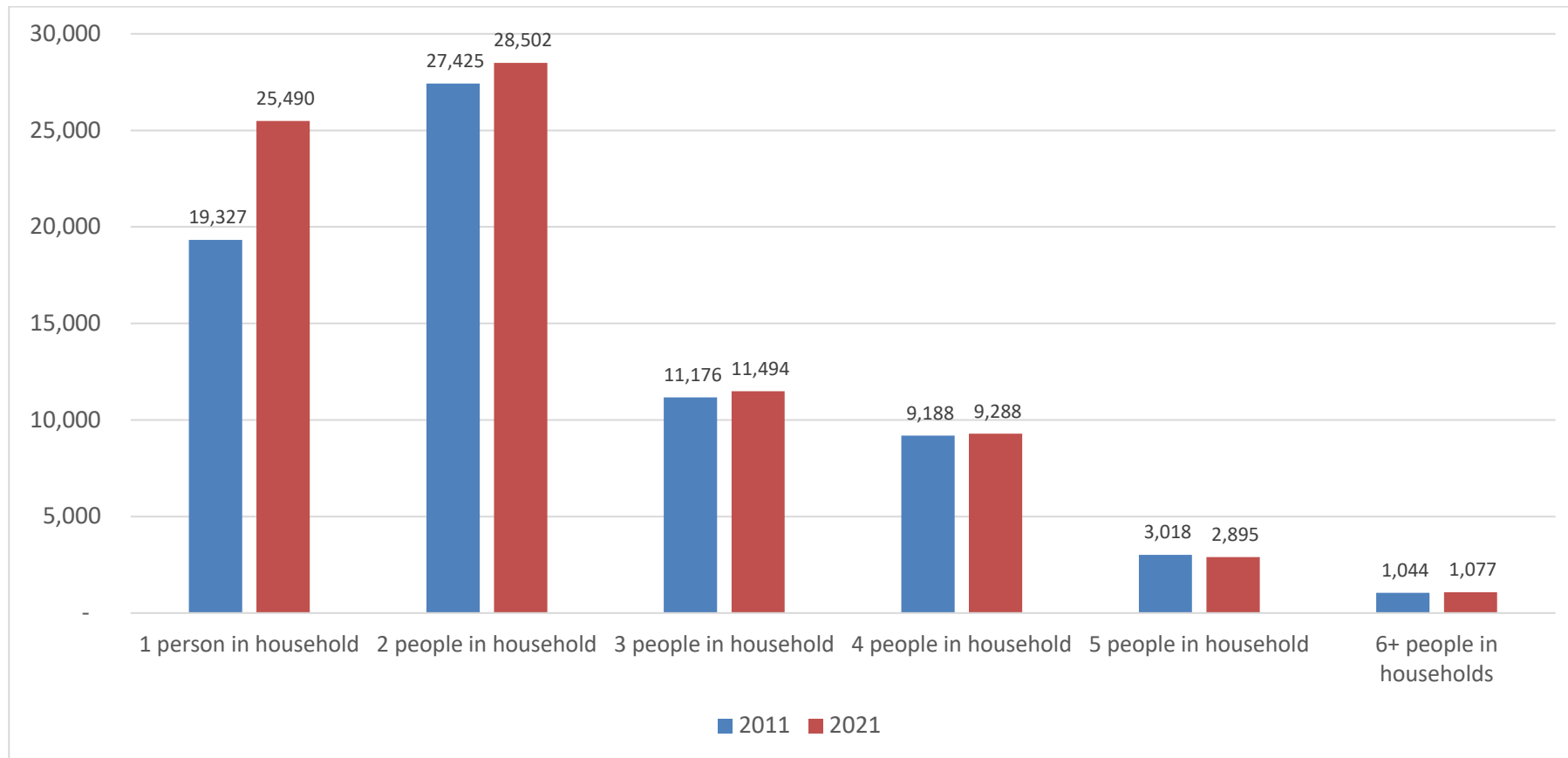
There have also been smaller increases (both in absolute and percentage terms) in 2-person, 3-person, 4-person, and 6+ person households overall.

Single person households account for 32.4 per cent of all households in West Suffolk in 2021, an increase of just over five percentage points since 2011.

All other household sizes have declined as a proportion of total households during this period in West Suffolk.

Across England and Wales there has been a more consistent increase across all household sizes. The dominance of the increase in single person households seen in West Suffolk is not reflected across England and Wales as a whole.

Chart 5. Count of households by size in West Suffolk: comparison of 2011 and 2021 censuses



Households by deprivation dimension

The dimensions of deprivation used to classify households are indicators based on the four selected household characteristics:

- Employment – any member of a household not a full-time student is either unemployed or long-term sick.
- Education – no person in the household has at least level 2 education, and no person aged 16-18 is a full-time student.
- Health and disability – any person in the household has general health 'bad or very bad' or has a long-term health problem.
- Housing – Household's accommodation is either overcrowded, with an occupancy rating -1 or less, or is in a shared dwelling, or has no central heating.

Each household is classified as being deprived in none or one to four of these dimensions and is only classified to one of the five options.

Table 6: Count of households in West Suffolk by deprivation dimensions, 2011 and 2021 censuses, and percentage change in Suffolk and England and Wales

	West Suffolk				Suffolk	England and Wales
	2011	2021	Change	Percentage change (%)	Percentage change (%)	Percentage change (%)
Household is not deprived in any dimension	31,724	38,855	7,131	22.5%	18.4%	21.0%
Household is deprived in one dimension	24,809	28,247	3,438	13.9%	11.7%	8.8%
Household is deprived in two dimensions	12,074	9,612	-2,462	-20.4%	-21.4%	-21.6%
Household is deprived in three dimensions	2,358	1,926	-432	-18.3%	-17.1%	-23.7%
Household is deprived in four dimensions	213	106	-107	-50.2%	-45.3%	-53.1%
Total	71,179	78,746	7,568	10.6%	7.3%	6.1%

According to this measure, the percentage of West Suffolk households that are not deprived in any dimension has increased by over 7,000 (22.5 per cent) between 2011 and 2021.

Overall, the number of households in West Suffolk that are deprived in any dimension has increased by 437 (1.1 per cent).

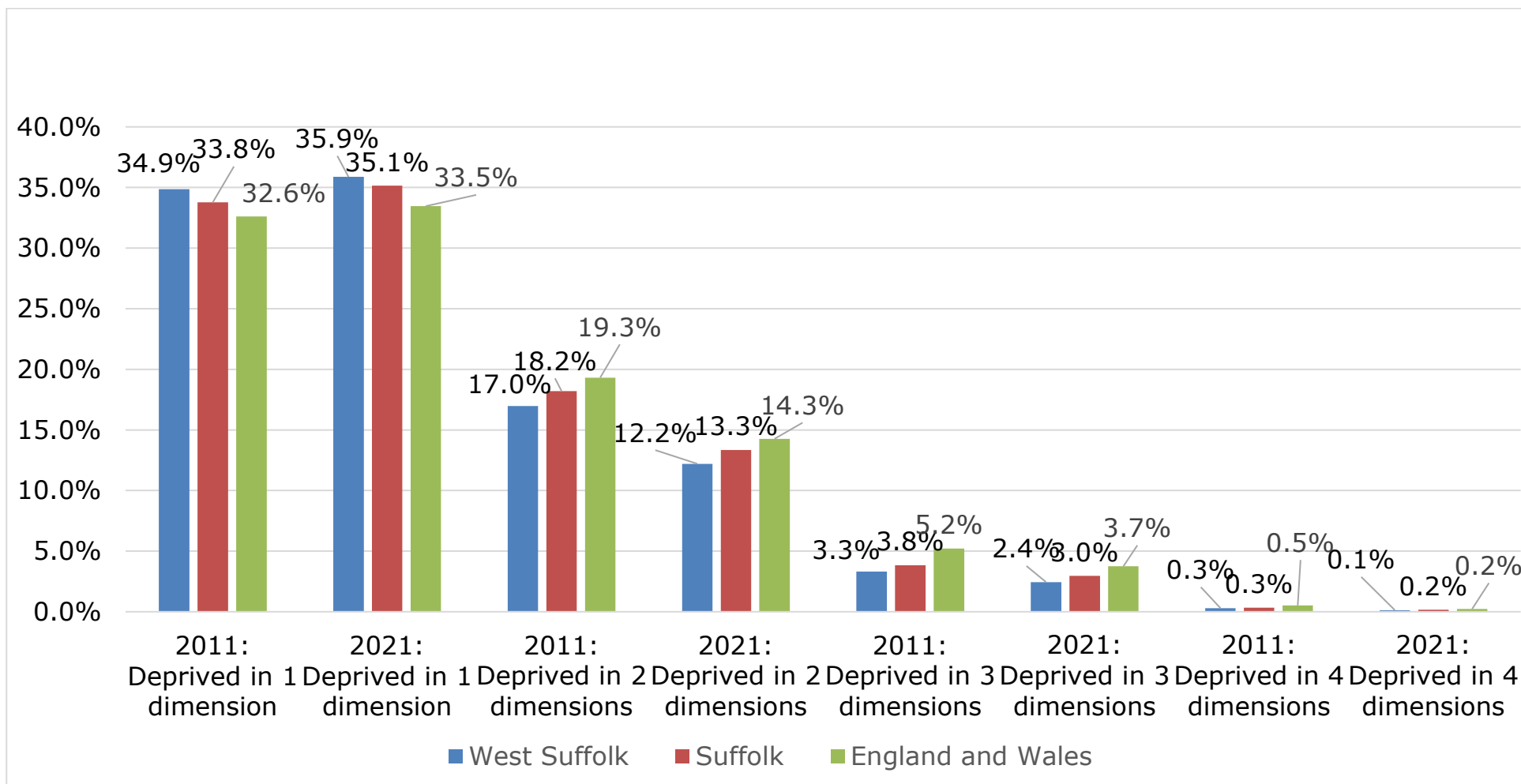
The number of households in West Suffolk that are deprived in one dimension has increased by 3,438 (13.9 per cent). However, there are also 2,462 fewer households that are deprived in two dimensions, 432 fewer that are deprived in three dimensions and 107 fewer that are deprived in four dimensions in the district.

A larger proportion of West Suffolk households (35.9 per cent) are deprived in one dimension than across Suffolk (35.1 per cent) and England and Wales as a whole (33.5 per cent). Households experiencing two or more deprivation dimensions account for a smaller percentage of households in West Suffolk than in Suffolk or across the country.

The data do not give a breakdown of which dimension households are deprived in. We can see from the household size data included in this census release that the most significant growth has been in single person households, so relatively speaking overcrowded households will have declined. However, the increase in people living alone could cause other concerns such as loneliness and social isolation.

This measure of deprivation is not as comprehensive as the Indices of Deprivation.

Chart 6: Percentage of households deprived in 1 or more dimension: 2011 and 2021 censuses



Number of usual residents in households and communal establishments

Table 7: All usual residents in West Suffolk, Suffolk and England and Wales by household or communal establishment, 2011 and 2021 censuses, including percentage change.

	Lives in a communal establishment				Lives in a household			
	2011	2011	2021	2021	2011	2011	2021	2021
	Count	Percentage (%)	Count	Percentage (%)	Count	Percentage (%)	Count	Percentage (%)
West Suffolk	4,639	2.7%	4,446	2.5%	166,117	97.3%	175,502	97.5%
Suffolk	14,050	1.9%	12,182	1.68%	714,113	98.1%	748,506	98.4%
England and Wales		1.8%		1.7%		98.2%		98.3%

- Communal establishments include – hospitals, care homes, prisons, defence bases, boarding schools, and student halls of residence.
- The number and percentage of usual residents in communal establishments has declined across all of Suffolk’s districts and boroughs between 2011 and 2021.
- West Suffolk has the largest communal establishment population of Suffolk’s districts and boroughs. HMP Highpoint and the air force bases around Lakenheath, Mildenhall and Honington account for a large proportion of these communal establishment residents.

Migration

Age of arrival in UK

- At the time of the 2021 census, 30,623 people usually resident in West Suffolk had arrived in the UK from abroad, 17 per cent up from 13.6 per cent in 2011.
- The most common age group of people who are now living in Suffolk having arrived from abroad were working-age people with young families.
- The 20-44 age group accounted for 60 per cent of new UK arrivals settled in West Suffolk at this point in time, a slightly higher proportion than in 2011. This is likely to be heavily influenced by US military personnel.
- Population growth among people born in the UK was 1.2 per cent in West Suffolk, 1.7 per cent in Suffolk and 2.1 per cent in England and Wales between 2011 and 2021.
- This data shows the age of people when they arrived in the UK, not their current age at the time of the census.

Table 8: All usual residents in West Suffolk by age of arrival in the UK, 2011 and 2021 censuses, and percentage change in Suffolk and England and Wales

	West Suffolk				Suffolk	England and Wales
	2011	2021	Change	Percentage change (%)	Percentage change (%)	Percentage change (%)
Born in the UK	147,567	149,325	1,758	1.2%	1.7%	21.1%
Not born in the UK	23,189	30,623	7,434	32.1%	35.5%	33.5%
Age of arrival in the UK 0 to 4	3,504	3,954	450	12.8%	15.8%	21.9%
Age of arrival in the UK 5 to 7	1,048	1,342	294	28.2%	26.1%	28.0%
Age of arrival in the UK 8 to 9	642	740	98	15.3%	24.4%	26.9%
Age of arrival in the UK 10 to 14	1,348	1,448	100	7.4%	18.2%	20.7%
Age of arrival in the UK 15	257	288	31	12.1%	24.8%	13.6%
Age of arrival in the UK 16 to 17	595	684	89	15.0%	25.6%	13.6%
Age of arrival in the UK 18 to 19	1,338	2,250	912	68.2%	46.8%	21.2%
Age of arrival in the UK 20 to 24	4,652	6,056	1,404	30.2%	28.5%	21.0%
Age of arrival in the UK 25 to 29	3,935	5,388	1,453	36.9%	41.4%	35.1%
Age of arrival in the UK 30 to 44	4,670	6,845	2,175	46.6%	58.5%	61.9%
Age of arrival in the UK 45 to 59	1,007	1,337	330	32.8%	62.7%	85.2%
Age of arrival in the UK 60+	193	291	98	50.8%	65.0%	77.7%
Usual resident population	170,756	179,948	9,192	5.4%	4.5%	6.3%

Country of birth

Table 9: All usual residents in West Suffolk by broad country of birth, 2021 census

	West Suffolk		Suffolk	England and Wales
	Number	Percentage (%)	Percentage (%)	Percentage (%)
Total: All usual residents	179,949			
Europe: United Kingdom	149,325	83%	89.3%	83.2%
Europe: EU countries: European Union EU14	4,339	2.4%	1.9%	2.7%
Europe: EU countries: European Union EU8	4,462	2.5%	1.7%	2.1%
Europe: EU countries: European Union EU2	1,685	0.9%	1.0%	1.2%
Europe: EU countries: All other EU countries	292	0.2%	0.1%	0.2%
Europe: Non-EU countries	866	0.5%	0.4%	0.8%
Africa	2,049	1.1%	1.1%	2.7%
Middle and East Asia	4,140	2.3%	2.0%	5.6%
The Americas and the Caribbean	12,152	6.8%	2.2%	1.3%
Antarctica and Oceania (including Australasia) and other	568	0.3%	0.2%	0.3%
British Overseas	71	0.0%	0.0%	0.0%

EU14: France, Germany, Italy, Belgium, Netherlands, Luxembourg, Ireland, Denmark, Spain, Greece, Portugal, Austria, Sweden, Finland. These countries were founding members of the EU or joined in 1995.

EU8: Hungary, Poland, Slovakia, Latvia, Estonia, Lithuania, Czechia, Slovenia. These countries joined the EU in 2004.

EU2: Bulgaria, Romania. These countries joined the EU in 2008.

Other EU countries: Cyprus, Malta, Croatia. Cyprus and Malta joined the EU in 2008, while Croatia joined in 2013.

- The 2021 census includes a more detailed question on country of birth than in 2011.
- 83 per cent of West Suffolk's resident population in 2021 was born in the UK, compared to 89.3 per cent of the population in Suffolk.
- Just under 11,000 West Suffolk residents were born in EU countries in 2021, 6 per cent of the total population of the county.
- People born in the Middle East and Asia accounted for 2.3 per cent of West Suffolk residents in 2021.
- 6.8 per cent of West Suffolk residents were born in the Americas and the Caribbean, compared to 2.2 per cent in Suffolk and 1.3 per cent across England and Wales as a whole. The presence of the United States Air Force (USAF) bases in West Suffolk explains the larger proportion of residents from this part of the world.

Detailed country of birth

Table 10: All usual residents in West Suffolk by detailed country of birth, 2021 census

	West Suffolk		Suffolk	England and Wales
	Number	Percentage (%)	%	%
Total: All usual residents	179,947	100.0%	100.0%	100.0%
Europe: United Kingdom: England	145,430	80.8%	87.3%	77.3%
Europe: United Kingdom: Northern Ireland	575	0.3%	0.3%	0.3%
Europe: United Kingdom: Scotland	2,167	1.2%	1.1%	1.1%
Europe: United Kingdom: Wales	1,142	0.6%	0.6%	4.5%
Europe: United Kingdom: Great Britain not otherwise specified	0	0.0%	0.0%	0.0%
Europe: United Kingdom: United Kingdom not otherwise specified	11	0.0%	0.0%	0.0%
Europe: Other Europe: EU countries: Member countries in March 2001: Ireland	924	0.5%	0.3%	0.5%
Europe: Other Europe: EU countries: Member countries in March 2001: France	291	0.2%	0.1%	0.3%
Europe: Other Europe: EU countries: Member countries in March 2001: Germany	985	0.5%	0.5%	0.4%
Europe: Other Europe: EU countries: Member countries in March 2001: Italy	395	0.2%	0.1%	0.5%
Europe: Other Europe: EU countries: Member countries in March 2001: Portugal (including Madeira and the Azores)	998	0.6%	0.4%	0.3%
Europe: Other Europe: EU countries: Member countries in March 2001: Spain (including Canary Islands)	227	0.1%	0.1%	0.3%
Europe: Other Europe: EU countries: Member countries in March 2001: Other member countries in March 2001	516	0.3%	0.3%	0.5%
Europe: Other Europe: EU countries: Countries that joined the EU between April 2001 and March 2011: Lithuania	718	0.4%	0.4%	0.3%

	West Suffolk		Suffolk	England and Wales
	Number	Percentage (%)	%	%
Europe: Other Europe: EU countries: Countries that joined the EU between April 2001 and March 2011: Poland	2,857	1.6%	0.9%	1.2%
Europe: Other Europe: EU countries: Countries that joined the EU between April 2001 and March 2011: Romania	1,383	0.8%	0.9%	0.9%
Europe: Other Europe: EU countries: Countries that joined the EU between April 2001 and March 2011: Other EU countries	1,467	0.8%	0.7%	0.9%
Europe: Other Europe: EU countries: Countries that joined the EU between April 2011 and March 2021: Croatia	14	0.0%	0.0%	0.0%
Europe: Other Europe: Rest of Europe: Turkey	251	0.1%	0.1%	0.2%
Europe: Other Europe: Rest of Europe: Other Europe	615	0.3%	0.3%	0.6%
Africa: North Africa	154	0.1%	0.1%	0.3%
Africa: Central and Western Africa: Ghana	94	0.1%	0.1%	0.2%
Africa: Central and Western Africa: Nigeria	198	0.1%	0.1%	0.5%
Africa: Central and Western Africa: Other Central and Western Africa	125	0.1%	0.1%	0.3%
Africa: South and Eastern Africa: Kenya	105	0.1%	0.1%	0.2%
Africa: South and Eastern Africa: Somalia	16	0.0%	0.0%	0.2%
Africa: South and Eastern Africa: South Africa	670	0.4%	0.3%	0.4%
Africa: South and Eastern Africa: Zimbabwe	382	0.2%	0.2%	0.2%
Africa: South and Eastern Africa: Other South and Eastern Africa	310	0.2%	0.2%	0.4%
Africa: Africa not otherwise specified	0	0.0%	0.0%	0.0%
Middle East and Asia: Middle East: Iran	54	0.0%	0.0%	0.2%
Middle East and Asia: Middle East: Iraq	101	0.1%	0.1%	0.1%

	West Suffolk		Suffolk	England and Wales
	Number	Percentage (%)	%	%
Middle East and Asia: Middle East: Other Middle East	190	0.1%	0.1%	0.4%
Middle East and Asia: Eastern Asia: China	204	0.1%	0.1%	0.3%
Middle East and Asia: Eastern Asia: Hong Kong (Special Administrative Region of China)	178	0.1%	0.1%	0.2%
Middle East and Asia: Eastern Asia: Other Eastern Asia	271	0.2%	0.1%	0.1%
Middle East and Asia: Southern Asia: Afghanistan	32	0.0%	0.0%	0.1%
Middle East and Asia: Southern Asia: India	984	0.5%	0.5%	1.5%
Middle East and Asia: Southern Asia: Pakistan	329	0.2%	0.1%	1.0%
Middle East and Asia: Southern Asia: Bangladesh	157	0.1%	0.2%	0.5%
Middle East and Asia: Southern Asia: Sri Lanka	150	0.1%	0.1%	0.2%
Middle East and Asia: Southern Asia: Other Southern Asia	71	0.0%	0.0%	0.1%
Middle East and Asia: South-East Asia: Philippines	803	0.4%	0.3%	0.3%
Middle East and Asia: South-East Asia: Malaysia	127	0.1%	0.1%	0.1%
Middle East and Asia: South-East Asia: Singapore	102	0.1%	0.1%	0.1%
Middle East and Asia: South-East Asia: Other South-East Asia	363	0.2%	0.2%	0.2%
Middle East and Asia: Central Asia	26	0.0%	0.0%	0.0%
The Americas and the Caribbean: North America: United States	11,116	6.2%	1.7%	0.3%
The Americas and the Caribbean: North America: Canada	157	0.1%	0.1%	0.1%
The Americas and the Caribbean: North America: Other North America	6	0.0%	0.0%	0.0%
The Americas and the Caribbean: Central America: All Central American countries	103	0.1%	0.0%	0.0%

	West Suffolk		Suffolk	England and Wales
	Number	Percentage (%)	%	%
The Americas and the Caribbean: South America: All South American countries	430	0.2%	0.2%	0.4%
The Americas and the Caribbean: The Caribbean: Jamaica	101	0.1%	0.1%	0.2%
The Americas and the Caribbean: The Caribbean: Other Caribbean	252	0.1%	0.1%	0.2%
Antarctica and Oceania: Australasia: Australia	303	0.2%	0.1%	0.2%
Antarctica and Oceania: Australasia: New Zealand	137	0.1%	0.1%	0.1%
Antarctica and Oceania: Australasia: Other Australasia	0	0.0%	0.0%	0.0%
Antarctica and Oceania: Other Oceania and Antarctica	178	0.1%	0.0%	0.0%
Other	2	0.0%	0.0%	0.0%

Length of residence

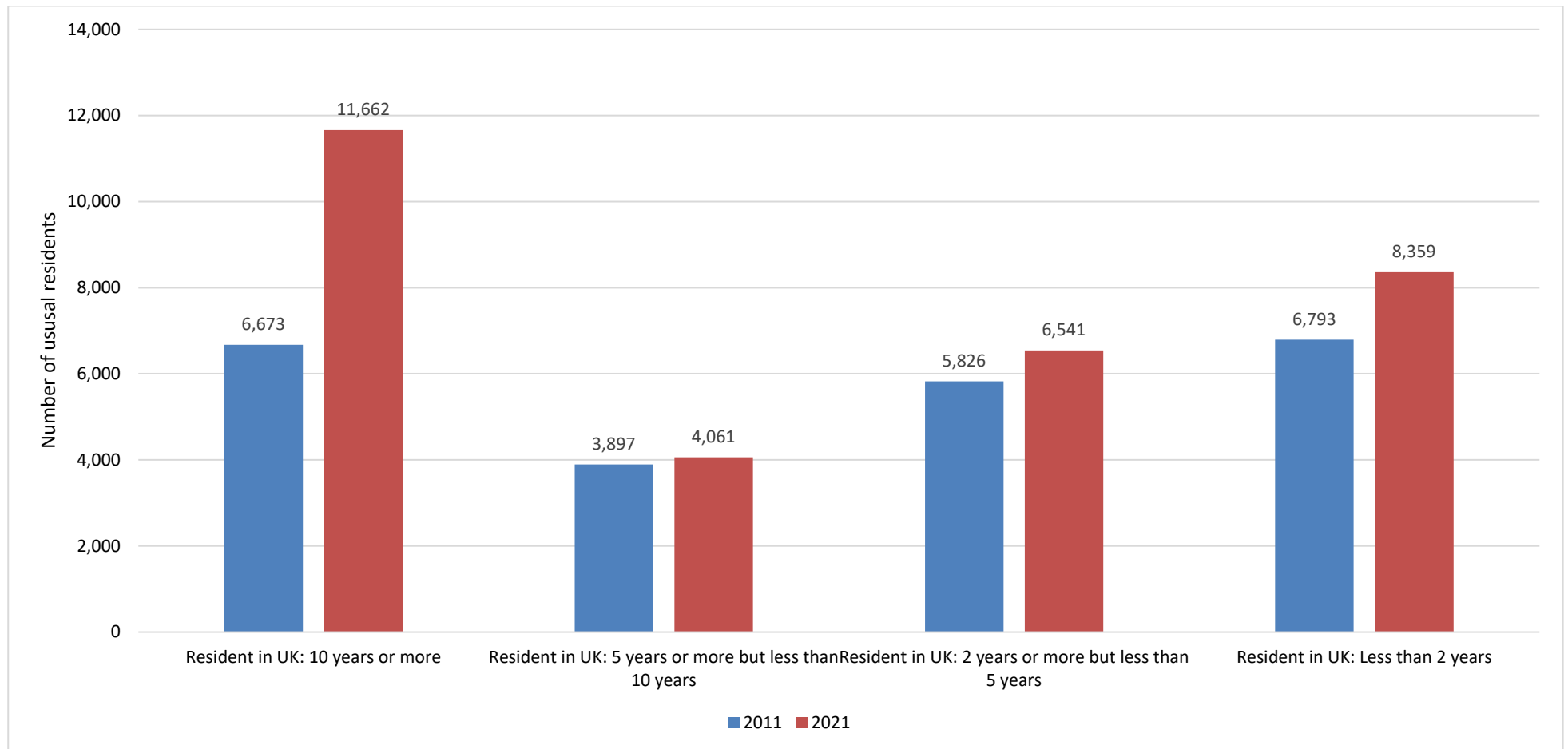
Table 11: All usual residents in West Suffolk by length of residence in UK, 2011 and 2021 censuses, and percentage change in Suffolk and England and Wales

	West Suffolk				Suffolk	England and Wales
	2011	2021	Change	Percentage change (%)	Percentage change (%)	Percentage change (%)
Born in the UK	147,567	149,325	1,758	1.2%	1.7%	2.1%
Resident in the UK: 10 years or more	6,673	11,662	4,989	74.8%	63.4%	53.9%
Resident in the UK: 5 years or more but less than 10 years	3,897	4,061	164	4.2%	16.4%	11.4%
Resident in the UK: 2 years or more but less than 5 years	5,826	6,541	715	12.3%	12.5%	10.2%
Resident in the UK: less than 2 years	6,793	8,359	1,566	23.1%	16.9%	17.8%
All categories: Length of residence in the UK	170,756	179,948	9,192	5.4%	4.5%	6.3%

- At the time of the 2021 census, 89.5 per cent of West Suffolk's population was either born in the UK or has been resident in the UK for more than 10 years. This is a very similar level to 2011 (90.3 per cent).
- Of the 18,961 West Suffolk residents who had lived in the UK for less than 10 years on Census Day 2021, 21 per cent had been resident for 5 years or more but less than 10 years, 34 per cent for 2 years or more but less than 5 years, and 44 per cent had been resident in the UK for less than 2 years.

The figures for Suffolk and England and Wales do not show the same split; in Suffolk there was an even split and in England and Wales of those residents who had lived in the UK for less than 10 years, 41 per cent had been resident for 5 years or more but less than 10 years, 32 per cent for 2 years or more but less than 5 years, and 27 per cent had been resident in the UK for less than 2 years.

Chart 7: Length of residence in the UK (not born in the UK): West Suffolk: 2011 and 2021 censuses



Non-UK short term residents

A short-term UK resident is anyone born outside of the UK who, on 21 March 2021, had stayed or intended to stay in the UK for a period of three months or more but less than 12 months.

Table 12: Count of and percentage change in non-UK short-term residents in West Suffolk, Suffolk and England and Wales, 2011 and 2021 censuses

	2011	2021	Percentage change (%)
West Suffolk	502	360	-28.3%
Suffolk	1,303	805	-38.2%
England and Wales	195,074	136,469	-30.0%

- The number of non-UK short-term residents has declined across West Suffolk, Suffolk and across England and Wales from 2011 to 2021.

Passports held

This data classifies a person according to the passport or passports they held at the time of the census. This included expired passports or travel documents people were entitled to renew. Where a person recorded having more than one passport, they were counted only once, categorised in the following priority order:

1. UK passport
2. Irish passport
3. Other passport. Only the first country written in 'Other passport' was taken.

In 2011, the total number of passports held exceeds the number of usual residents as the census data accounted for people holding more than one passport.

Some countries have been grouped (particularly from the 2021 census outputs) to allow comparison with 2011 figures.

- There were 6,613 more UK passport holders living in West Suffolk in 2021 than there were in 2011.
- In 2021 there were 3,728 more holders of other European passports resident in West Suffolk than there were in 2011, an increase of nearly 65 per cent. The equivalent increase in holders of other European passports across Suffolk and England and Wales was higher at 79.5 per cent and 76.7 per cent.
- West Suffolk has a high percentage of holders of American passports. This is due to the United States visiting forces.
- 28,443 (15.8 per cent) West Suffolk residents did not have a passport at the time of the 2021 census.

Table 13: All usual residents in West Suffolk by passport held, 2011 and 2021 censuses, and percentage change in West Suffolk, Suffolk and England and Wales

	West Suffolk				Suffolk	England and Wales
	2011	2021	Change	Percentage change (%)	Percentage change (%)	Percentage change (%)
United Kingdom	121,292	127,905	6,613	5.5%	6.1%	7.6%
Republic of Ireland	964	859	-105	-10.9%	-7.1%	-10.8%
Other Europe	5,771	9,499	3,728	64.6%	79.5%	76.7%
Africa	711	481	-230	-32.3%	-22.5%	-27.3%
Middel East and Asia	1,342	1,366	24	1.8%	-9.2%	-5.2%
The Americas and Caribbean	10,190	11,247	1,057	10.4%	-0.2%	-28.5%
Antarctica and Oceania	440	162	-278	-63.2%	-67.7%	-63.5%
British Overseas Territories	1	1	0	0.0%	33.3%	-69.9%
No passport	31,619	28,433	-3,186	-10.1%	-11.2%	-15.2%
All usual residents	170,756	179,953	9,197	5.4%	4.5%	6.3%

Year of arrival in UK

Table 14: All usual residents in West Suffolk by year of arrival in the UK, 2011 and 2021 censuses, and percentage change in West Suffolk, Suffolk and England and Wales

	West Suffolk				Suffolk	England and Wales
	2011	2021	Change	Percentage change (%)	Percentage change (%)	Percentage change (%)
Born in the UK	147,567	149,325	1,758	1.2%	1.7%	2.1%
Arrived before 1951	604	296	-308	-52.0%	52.9%	-59.7%
Arrived 1951-1960	791	608	-183	-23.1%	-22.6%	-34.2%
Arrived 1961-1970	1,087	980	-107	-9.8%	-8.1%	-19.0%
Arrived 1971-1980	919	824	-95	-10.3%	-4.2%	-11.8%
Arrived 1981-1990	1,117	998	-119	-10.7%	-4.6%	-11.1%
Arrived 1991-2000	2,048	1,655	-393	-19.2%	-12.1%	-12.1%
Arrived 2001-2010	16,613	6,172	-10,451	-62.9%	-43.1%	-28.6%
Arrived 2011-2021		19,089				
All usual resident population	170,756	179,947	9,191	5.4%	4.5%	6.3%

- Since the last census, there has been a fall in every decade before 2011 in the number of West Suffolk residents that arrived in the UK
- The largest drop, in both absolute and percentage terms, is in the decade from 2001 to 2011. There are almost 10,500 fewer West Suffolk residents that arrived in the UK during this period (62.9 per cent). There was also a 43.1 per cent fall in residents across Suffolk and a 28.6 per cent fall in residents across England and Wales that arrived in the UK during this 10-year period, so while part of this fall may be accounted for by people leaving Suffolk, it is likely that much of it is due to people leaving the country altogether.
- Residents that came to the UK in the earlier decades displayed here could now be at least 60 or 70 years old, so the decline in these numbers may be due to people coming to the end of their lives.

UK armed forces veteran data

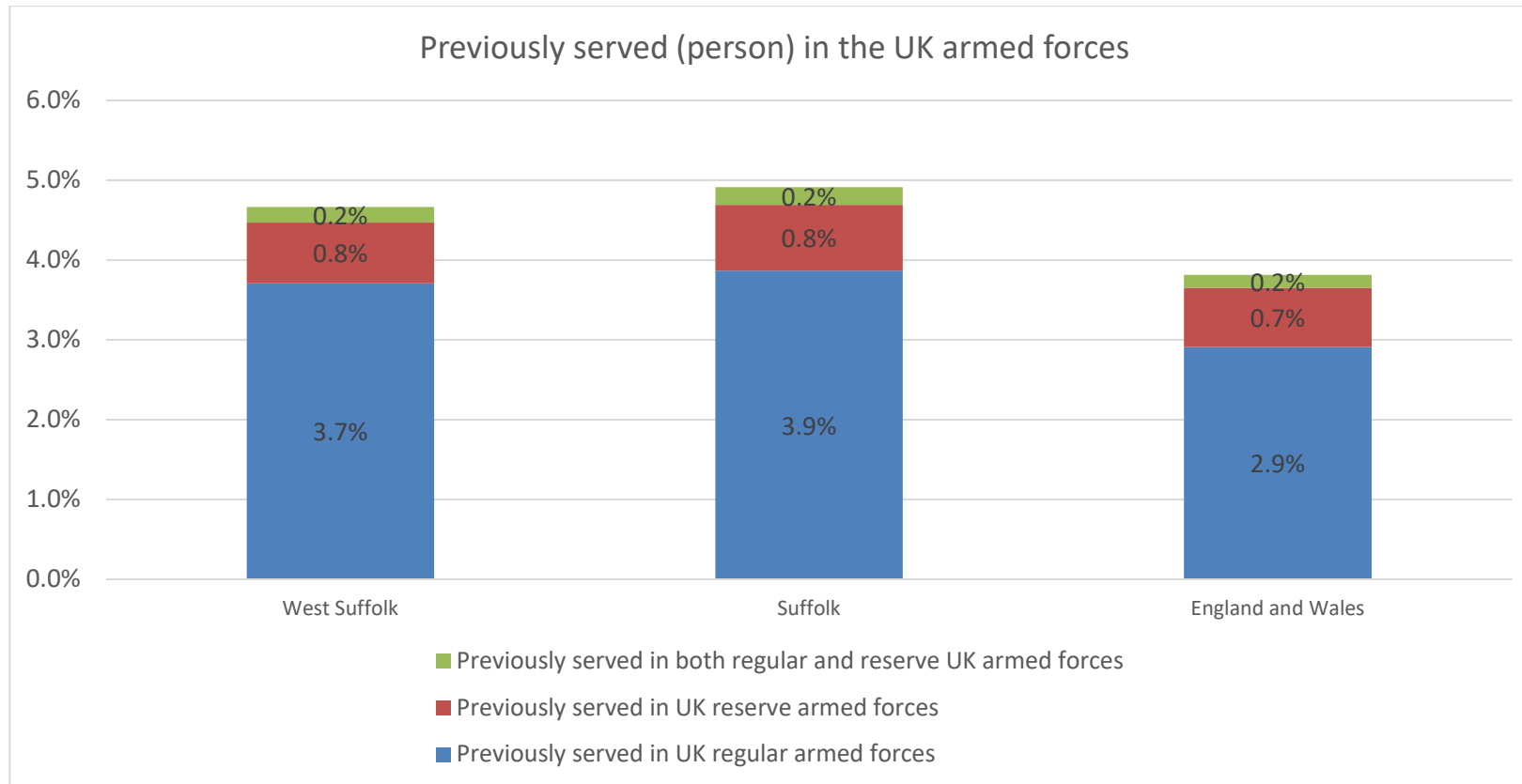
Dataset description: This dataset provides 2021 Census estimates that classify usual residents in England and Wales by whether or not they have previously served in the UK armed forces. The estimates are as at Census Day, 21 March 2021.

Variable description: Identifies people who have previously served in the UK armed forces. This includes those who have served for at least one day in armed forces, either regular or reserves, or Merchant Mariners who have seen duty on legally defined military operations.

Table 15: Previously served (person) in the UK armed forces

	West Suffolk		Suffolk	England and Wales
	Number	Percentage (%)	Percentage (%)	Percentage (%)
Previously served in UK regular armed forces	5,494	3.7%	3.9%	2.9%
Previously served in UK reserve armed forces	1,128	0.8%	0.8%	0.7%
Previously served in both regular and reserve UK armed forces	292	0.2%	0.2%	0.2%
Had not previously served in any UK armed forces	141,213	95.3%	95.1%	96.2%
Total: All usual residents aged 16 and over	148,127	100.0%	100.0%	100.0%

Chart 8: Previously served (person) in the UK armed forces



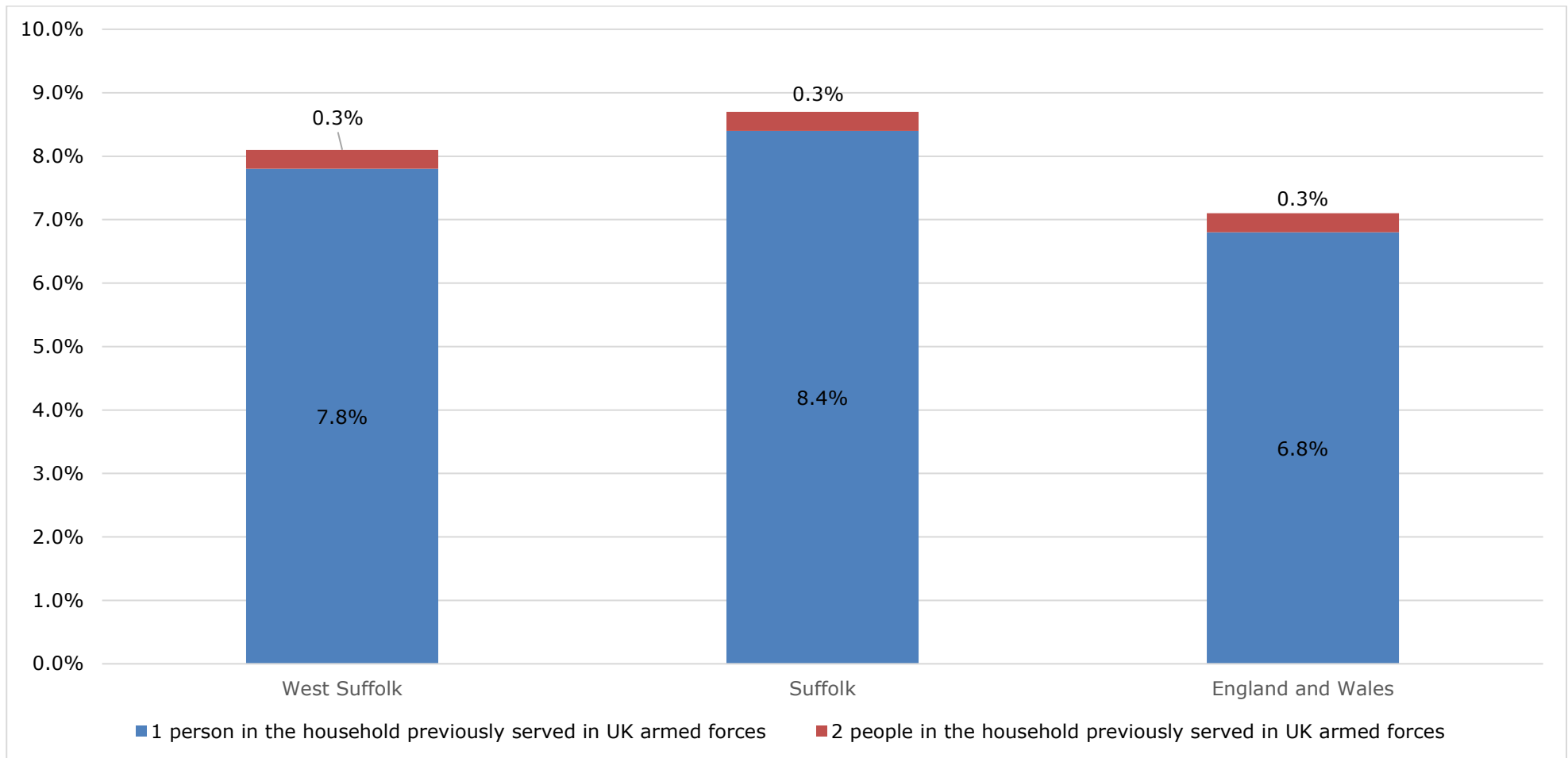
UK armed forces veteran data – household

Table 16: Previously served (household) in the UK armed forces. Census 2021

	West Suffolk		Suffolk	England and Wales
	Number	Percentage (%)	Percentage (%)	Percentage (%)
No people in the household previously served in UK armed forces	72,349	91.9%	91.3%	93.0%
1 person in the household previously served in UK armed forces	6,132	7.8%	8.4%	6.8%
2 people in the household previously served in UK armed forces	261	0.3%	0.3%	0.3%
3 or more people in the household previously served in UK armed forces	3	0.0%	0.0%	0.0%
Total: All households	78,745	100.0%	100.0%	100.0%

- 8.1 per cent of households in West Suffolk are home to a UK armed forces veteran. This is higher than the England and Wales average of 7.1 per cent.
- All of Suffolk’s Districts and Boroughs contain a larger proportion of households that have at least one UK armed forces veteran as a member than across the East of England or England and Wales.

Chart 9: Previously served (household) in the UK armed forces



UK armed forces veteran data – communal establishment

Dataset description: This dataset provides Census 2021 estimates that classify usual residents in England and Wales who have previously served in the UK armed forces by whether they reside in communal establishments and in households. The estimates are as at Census Day, 21 March 2021.

Variable description: Whether a person lives in a household or a communal establishment. Communal establishments include hospitals, care homes, prisons, defence bases, boarding schools and student halls of residence.

People who completed the normal household questionnaire were recorded as living in a household. Those who completed an individual questionnaire were asked if they lived in a household or a communal establishment.

Table 17: Previously served (person) in the UK armed forces in communal establishments and in households

	West Suffolk		Suffolk	England and Wales
	Number	Percentage (%)	Percentage (%)	Percentage (%)
Lives in a household	6,664	96.3%	97.5%	98.0%
Lives in a communal establishment	253	3.7%	2.5%	2.0%
Total: All usual resident	6.917	100.0%	100.0%	100.0%

- 3.7 per cent of UK armed forces veterans in West Suffolk live in a communal establishment. This is higher than the Suffolk average of 2.5 per cent and the England and Wales average of 2 per cent.

National identity

Table 18: Usual resident population by national identity, West Suffolk, Suffolk and England and Wales, Census 2021

	West Suffolk		Suffolk	England and Wales
	Number	Percentage (%)	Percentage (%)	Percentage (%)
UK identity: British only identity	87,984	48.9%	52.4%	54.8%
UK identity: English only identity	35,665	19.8%	20.2%	14.9%
UK identity: English and British only identity	28,063	15.6%	17.8%	13.6%
UK identity: Welsh only identity	492	0.3%	0.2%	3.2%
UK identity: Welsh and British only identity	171	0.1%	0.1%	0.6%
Any other combination of only UK identities	1,799	1.0%	0.9%	1.2%
Other identity only: Irish only identity	724	0.4%	0.3%	0.5%
Other identity only: Irish and at least one UK identity	136	0.1%	0.1%	0.1%
Other identity only (non-UK)	22,303	12.4%	6.8%	9.2%
UK identity: Other identity and at least one UK identity	2,616	1.5%	1.2%	1.9%
Total: All usual residents	179,953	100.0%	100.0%	100.0%

The data from 2021 are not meaningfully comparable to 2011. There has been a very significant increase in the number of usual residents describing their national identity as 'British' and a fall in the number describing their national identity as 'English'. While this may partly reflect true change, it is most likely to be a result of the changes to the question structure where 'British' became the top response option in 2021 for England only. The 2011 questionnaire also allowed people to tick more than one identity.

- According to the Census 2021 results, 48.9 per cent of West Suffolk's population gave their national identity as British only. Across England and Wales as a whole, 54.8 per cent of people identified as British only.
- Just over 1 in 5 West Suffolk residents identified as English only, compared to just over 1 in 7 across England and Wales.

Religion

Table 19: All usual residents by religion, 2011 and 2021 censuses

	West Suffolk				Suffolk	England and Wales
	2011	2021	Change	Percentage change (%)	Percentage change (%)	Percentage change (%)
Total: All usual residents	170,756	179,941	9,185	5.4%	4.5%	6.3%
Has religion	110,173	91,792	-18,381	-16.7%	-17.2%	-10.8%
Christian	107,364	87,174	-20,190	-18.8%	-19.2%	-17.2%
Buddhist	503	810	307	61.0%	33.3%	10.0%
Hindu	416	669	253	60.8%	33.0%	26.5%
Jewish	199	198	-1	-0.5%	14.9%	3.0%
Muslim (Islam)	966	1,866	900	93.2%	59.5%	42.9%
Sikh	101	110	9	8.9%	23.0%	23.9%
Other religion	624	965	341	54.6%	36.9%	44.8%
No religion	48,008	76,595	28,587	59.5%	55.0%	57.2%
Not answered	12,575	11,554	-1,021	-8.1%	-13.4%	-11.0%

- Just over 50 per cent of West Suffolk's population has a religion according to the 2021 census, down from 64.5 per cent in 2011.
- The percentage of the West Suffolk population who are Christian now sits at 48.4 per cent, a fall from 62.9 per cent since 2011.
- The number of people practising all other religions in West Suffolk has increased by 36.9 per cent over the past decade.
- There are now 4,618 people in the district that practise a religion other than Christianity, 2.6 per cent of the total population, compared to 10.6 per cent of the population for England and Wales.

- The number of Buddhists and Hindus has increased from 919 to 1479, a 61 per cent increase, while there are 93 per cent more Muslims in the district in 2021 than there were ten years ago, this compares to a 60 per cent increase in Suffolk and a 43 per cent increase in England and Wales.
- The number of people with no religion has grown by nearly 60 per cent since 2011 and now accounts for 42.6 per cent of West Suffolk’s population, up from 28.1 per cent in 2011.

Chart 10: Percentage change in resident population by religion, West Suffolk and England and Wales, Census 2011 to Census 2021

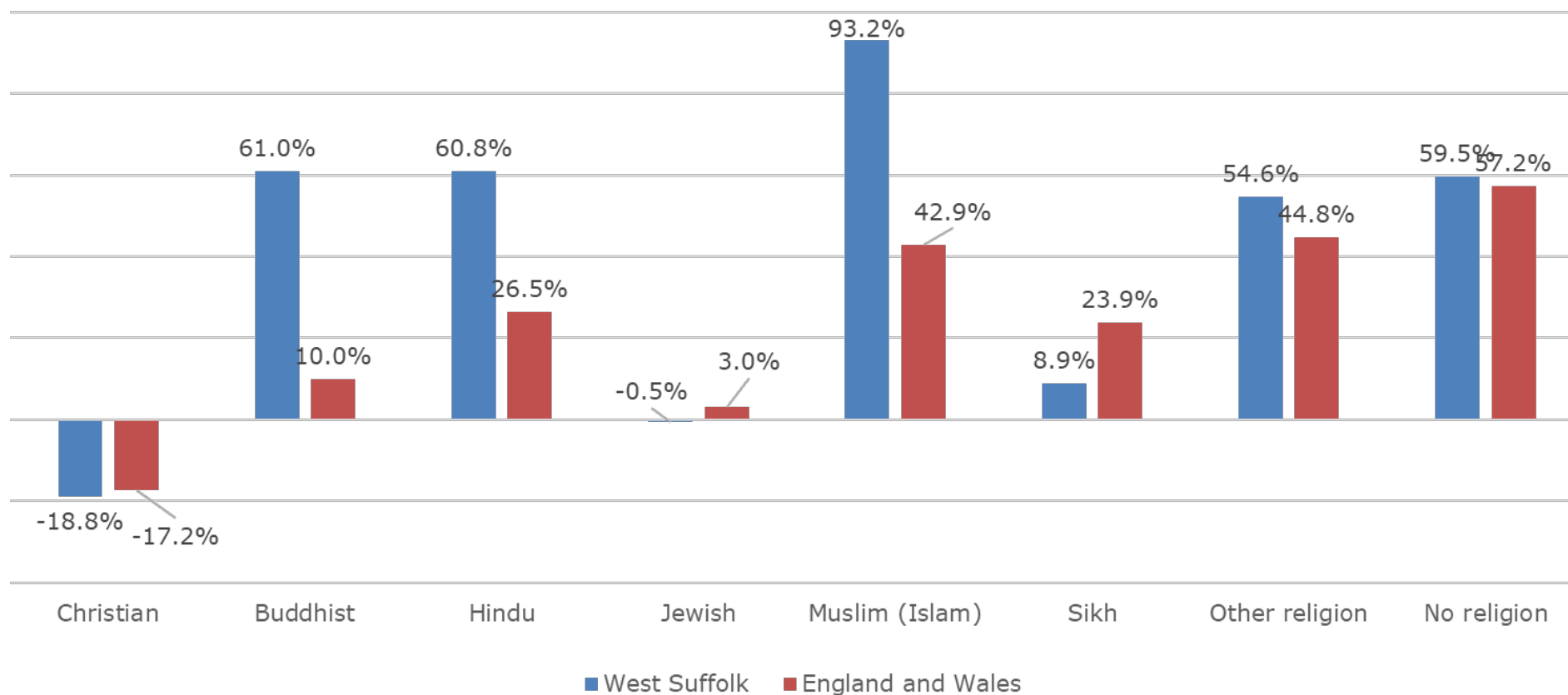
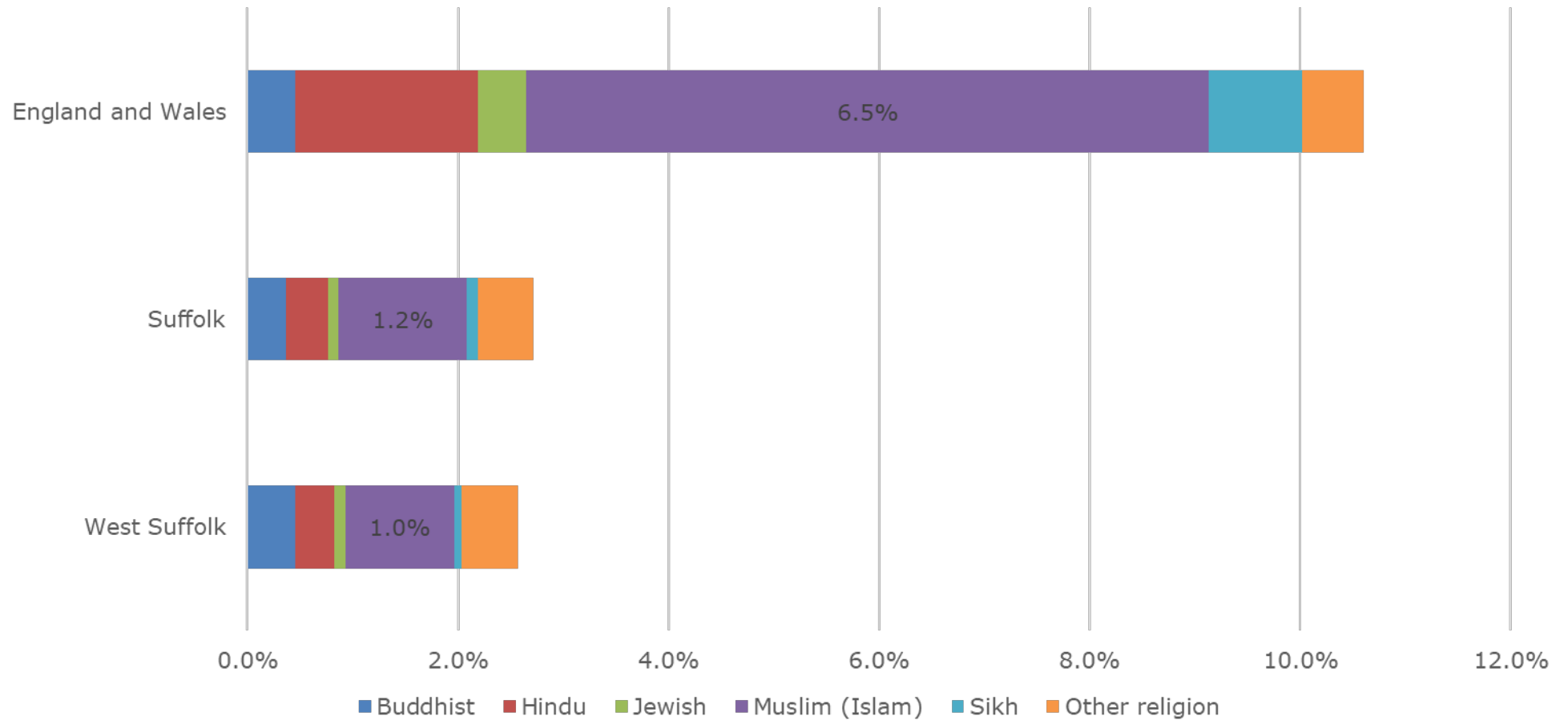
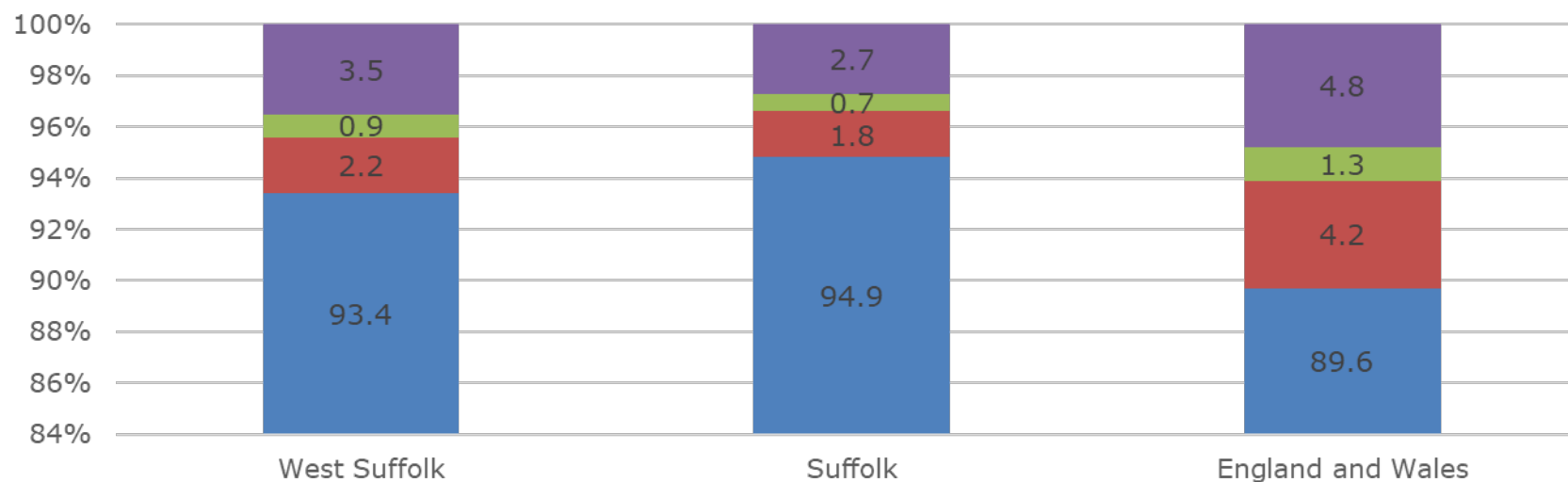


Chart 11: Percentage of resident population by religion other than Christianity, West Suffolk, Suffolk and England and Wales, Census 2021



Household language

Chart 12: Main language of adults in a household (percentage), West Suffolk, Suffolk and England and Wales, Census 2021



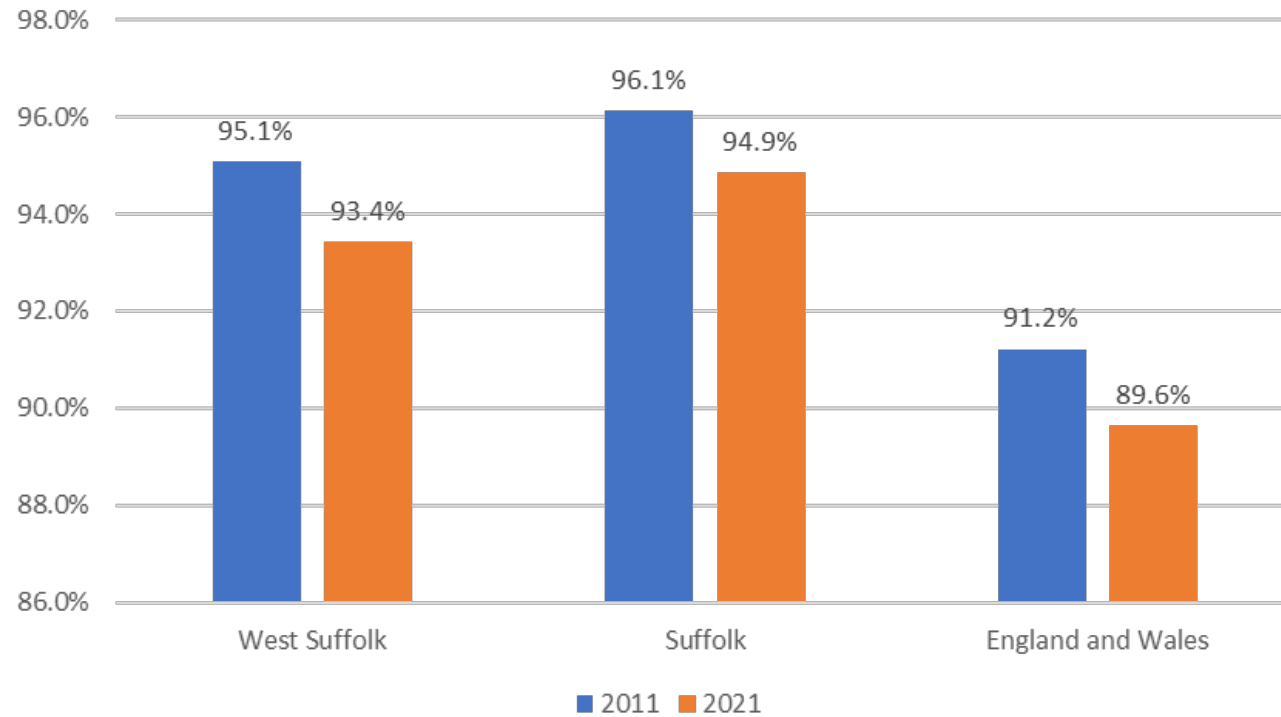
- No people in household have English in England, or English or Welsh in Wales as a main language
- No adults in household, but at least one person aged 3 to 15 years, has English in England or English or Welsh in Wales as a main language
- At least one but not all adults in household have English in England, or English or Welsh in Wales as a main language
- All adults in household have English in England, or English or Welsh in Wales as a main language

Table 20: Main language of adults in a household in West Suffolk and percentage change for West Suffolk, Suffolk and England and Wales, 2011 and 2021 censuses

	West Suffolk				Suffolk	England and Wales
	2011	2021	Change	Percentage change (%)	Percentage change (%)	Percentage change (%)
All categories: English as a household language	71,178	78,746	7,568	10.6%	7.3%	6.1%
All people aged 16 and over in household have English as a main language (English or Welsh in Wales)	67,679	73,566	5,887	8.7%	5.9%	4.2%
At least one but not all people aged 16 and over in household have English as a main language (English or Welsh in Wales)	1,569	1,735	166	10.6%	19.0%	19.4%
No people aged 16 and over in household but at least one person aged 3 to 15 has English as a main language (English or Welsh in Wales)	219	721	502	229.2%	174.0%	81.6%
No people in household have English as a main language (English or Welsh in Wales)	1,711	2,724	1,013	59.2%	43.0%	19.8%

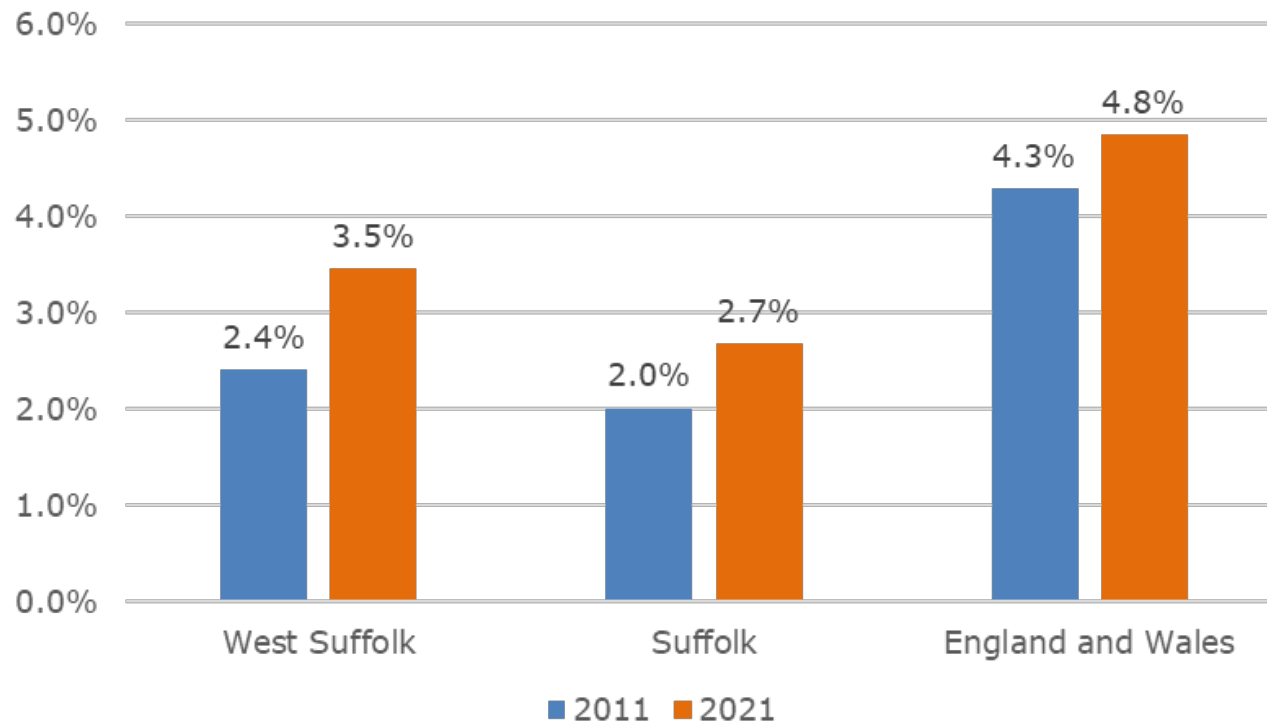
- Over 73,500 West Suffolk households (93.4 per cent) contain only adults who have English as a first language. The number of such households has increased by 8.7% since 2011, but as a proportion of all households it has fallen by 1.7 percentage points.
- English is not the first language for any person in around 2,700 households in West Suffolk, an increase of 1,013 (59.2 per cent) since 2011. It is important to note that this does not mean that people cannot speak English at all, only that it is not their first language. See the proficiency in English language section for data on this.
- The largest increase of any of the categories presented here is in households where no adults have English as a main language, but it is considered to be a main language for a child aged 3 to 15 years in the household.

Chart 13: Percentage of households in which all adults have English as a main language, 2011 and 2021 censuses



English is the first language among all adults in around 93 per cent of households in West Suffolk, this is higher than the England and Wales average but lower than Suffolk.

Chart 14: Percentage of households in which no people have English as a main language



In the county, English is not a main language for any of the adults in around 1 in 14 households in Ipswich in 2021 (7.2 per cent) however West Suffolk has the next highest percentage of households in which no adults have English as a main language (3.5 per cent). There was also an above average increase of 1.1 percentage points in the district since 2011.

Main language

Chart 15: All usual residents aged 3 years and over by main language (broad group), West Suffolk, Suffolk and England and Wales. Census 2021

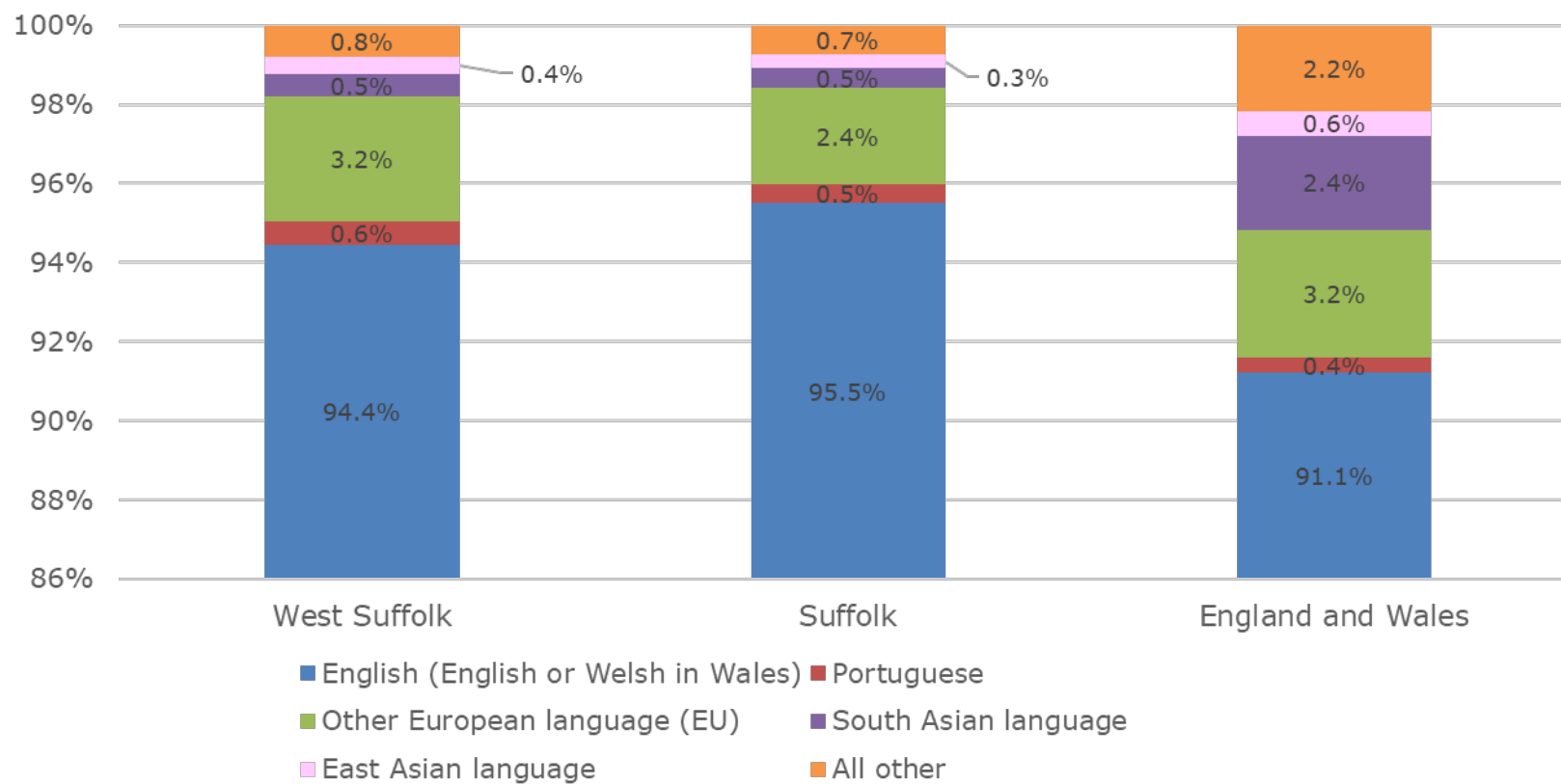


Table 21: All usual residents aged 3 years and over by main language, count of persons and percentage change in West Suffolk and percentage change in Suffolk, England and Wales, 2011 and 2021 censuses.

*Not included in 2011, people who gave another language were grouped in the 'other language' category.

	West Suffolk				Suffolk	England and Wales
	2011	2021	Change	Percentage change (%)	Percentage change (%)	Percentage change (%)
English (English or Welsh in Wales)	157,222	164,367	7,145	4.5%	3.8%	5.5%
Welsh or Cymraeg (in England only)	21	11	-10	047.6%	-27.7%	-10.9%
Other UK language	10	11	1	10.0%	0.0%	-11.1%
French	178	145	-33	-18.5%	-29.0%	-18.2%
Portuguese	746	1,039	293	39.3%	58.5%	58.4%
Spanish	230	299	69	30.0%	42.5%	78.9%
Other European language (EU)	3,789	5,504	1,715	45.3%	68.0%	56.6%
Other European language (non EU)	103	115	12	11.7%	-5.0%	13.7%
Other European language (EU and non EU)		29	29			
Other European language (non national)	0	0	0		-100%	19.5%
Russian	177	226	49	27.7%	34.8%	35.5%
Turkish	97	214	117	120.6%	52.6%	13.6%
Arabic	58	77	19	32.8%	83.3%	28.1%
West or Central Asian language	62	154	92	148.4%	29.1%	18.8%
South Asian language	584	950	366	62.7%	26.6%	6.0%
East Asian language	628	782	154	24.5%	2.6%	-6.7%
Oceanic or Australian language	11	10	-1	-9.1%	-16.7%	-3.9%
North or South American language	0	1	1		0.0%	-93.4%
Caribbean Creole	0	7	7		366.7%	248.6%

	West Suffolk				Suffolk	England and Wales
	2011	2021	Change	Percentage change (%)	Percentage change (%)	Percentage change (%)
African language	132	142	10	7.6%	-4.8%	-16.0%
Sign language	40	45	5	12.5%	6.2%	21.7%
Other language	35	8	-27	-77.1%	-73.7%	-58.4%
Total: All usual residents aged 3 years and over	164,123	174,136	10,013	6.1%	5.2%	6.9%

- 5,504 people in West Suffolk, which represents 3.2 per cent of the population, gave 'another EU language' as their main language, an increase of 45.3 per cent since 2011. Of these, 2,458 selected Polish (44.7 per cent), 1,177 Romanian (21.4 per cent), 550 Lithuanian (10 per cent), 261 Hungarian (4.7 per cent), 230 Italian (4.2 per cent) and 208 Bulgarian (3.8 per cent).
- There are 950 people in West Suffolk for whom a South Asian language is the main language, an increase of 62.7 per cent since 2011. The most commonly spoken South Asian languages in the county are Malayalam (291 people), Bengali (with Sylheti and Chatgaya) (91 people), and Tamil (98 people).
- The number of people in West Suffolk whose main language is East Asian has increased by 24.5 per cent in the last decade. Of the 782 people with a primary language from East Asia, the most commonly spoken individual language is Tagalog or Filipino, with 320 speakers in the district in 2021.
- There has been an increase in speakers of most of these languages in Suffolk.

Proficiency in English language

Table 22: Proficiency in English language in West Suffolk, Suffolk and England and Wales, count of persons and percentage of total persons, 2011 and 2021 censuses

	2011				2021			
	West Suffolk		Suffolk	England and Wales	West Suffolk		Suffolk	England and Wales
	Persons	Percentage (%)	%	%	Persons	%	%	%
Total: All usual residents aged 3 years and over	164,123				174,131			
Main language is English (English or Welsh in Wales)	157,222	95.8%	96.7%	92.3%	164,367	94.4%	95.5%	91.1%
Main language is not English (English or Welsh in Wales)	6,901	4.2%	3.3%	7.7%	9,764	5.6%	4.5%	8.9%
Main language is not English (English or Welsh in Wales): Can speak English very well	2,592	1.6%	1.3%	3.2%	4,520	2.6%	2.0%	3.9%
Main language is not English (English or Welsh in Wales): Can speak English well	2,867	1.7%	1.3%	2.9%	3,765	2.2%	1.7%	3.2%
Main language is not English (English or Welsh in Wales): Cannot speak English well	1,250	0.8%	0.6%	1.3%	1,295	0.7%	0.7%	1.5%
Main language is not English (English or Welsh in Wales): Cannot speak English	192	0.1%	0.1%	0.3%	184	0.1%	0.1%	0.3%

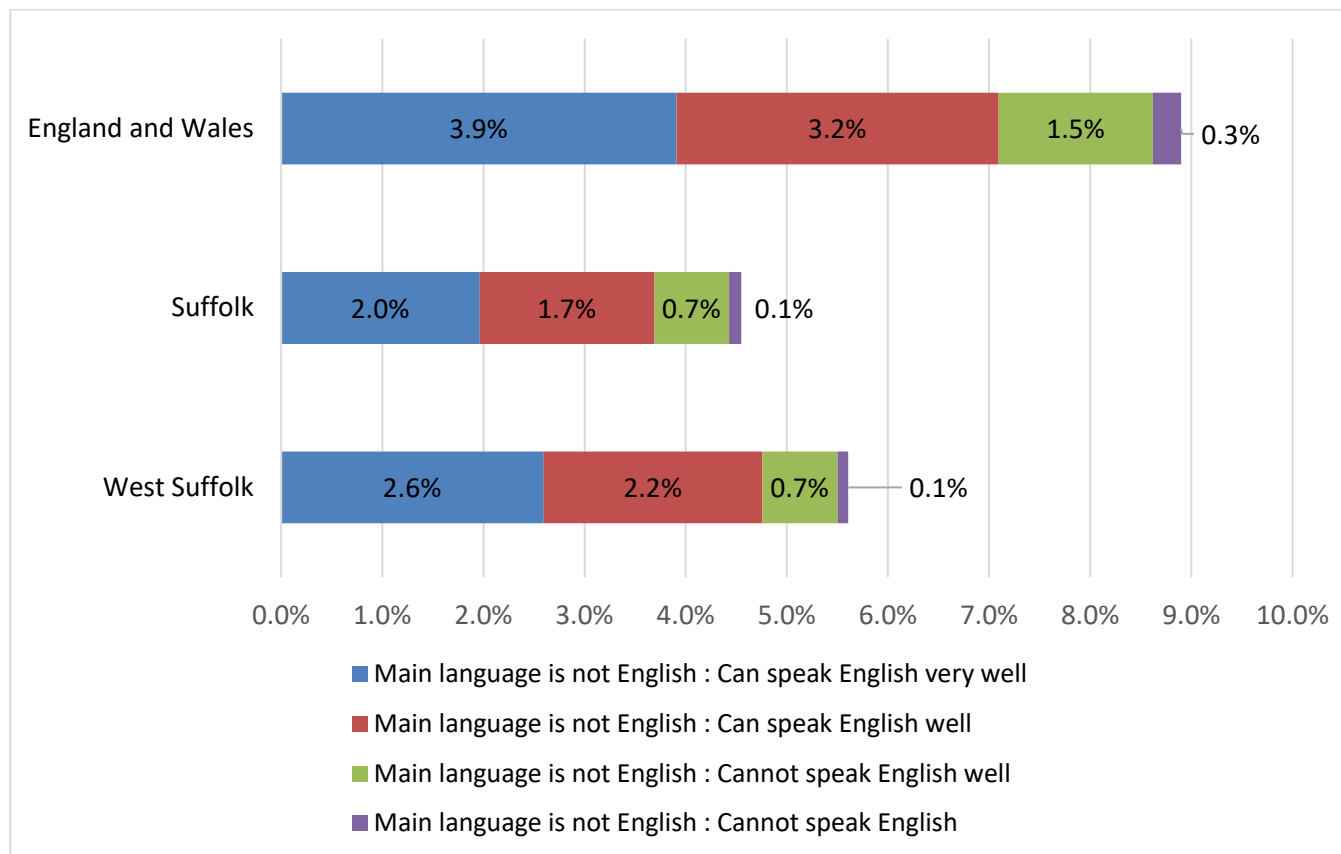
- English is the main language for 164,367 of West Suffolk's 174,131 usual residents aged 3 years and over (94.4 per cent).
- English is not the main language for 5.6 per cent of West Suffolk's population, this is lower than England and Wales (8.9 per cent)
- The percentage of residents for whom English is the main language in the district has declined by 1.4 percentage points since 2011, but still accounts for 94.4 per cent of the population.
- The number of people in West Suffolk for whom the main language is not English has increased since 2011, now accounting for 5.6 per cent of the population (up from 4.2 per cent in 2011).

Table 23: Proficiency in English language in West Suffolk, count of persons and percentage change, and percentage change in Suffolk and England and Wales, 2011 and 2021 censuses

	West Suffolk				Suffolk	England and Wales
	2011	2021	Change	Percentage change (%)	Percentage change (%)	Percentage change (%)
Main language is English (English or Welsh in Wales)	157,222	164,367	7,145	4.5%	3.8%	5.5%
Main language is not English (English or Welsh in Wales)	6,901	9,764	2,863	41.5%	44.9%	23.6%
Main language is not English (English or Welsh in Wales): Can speak English very well	2,592	4,520	1,928	74.4%	59.8%	31.0%
Main language is not English (English or Welsh in Wales): Can speak English well	2,867	3,765	898	31.3%	40.2%	17.3%
Main language is not English (English or Welsh in Wales): Cannot speak English well	1,250	1,295	45	3.6%	27.0%	21.2%
Main language is not English (English or Welsh in Wales): Cannot speak English	192	184	-8	-4.2%	22.0%	16.8%
Total: All usual residents aged 3 years and over	164,123	174,131	10,008	6.1%	5.2%	6.9%

- While the number and percentage of the population in West Suffolk for whom English is not their first language has increased since 2011, the change in those who cannot speak English or cannot speak it well has not increased at the same rate.
- There has been a 41.5 per cent increase in West Suffolk residents for whom English is not their first language (2,863 people), but a 4.2 per cent fall in those who cannot speak English (8 people). Of those for whom English is not their first language, there has been a 74.4 per cent increase in those that can speak English well (1,928 people)

Chart 16: Percentage of all usual residents aged 3 years and over for whom their main language is not English, by proficiency in English, Census 2021



English is not the main language for 5.6 per cent of West Suffolk's population in 2021. 0.8 per cent of the population cannot speak English or cannot speak it well.

Ethnic group

Chart 17: Usual resident population by ethnic group in West Suffolk: 2011 and 2021 censuses

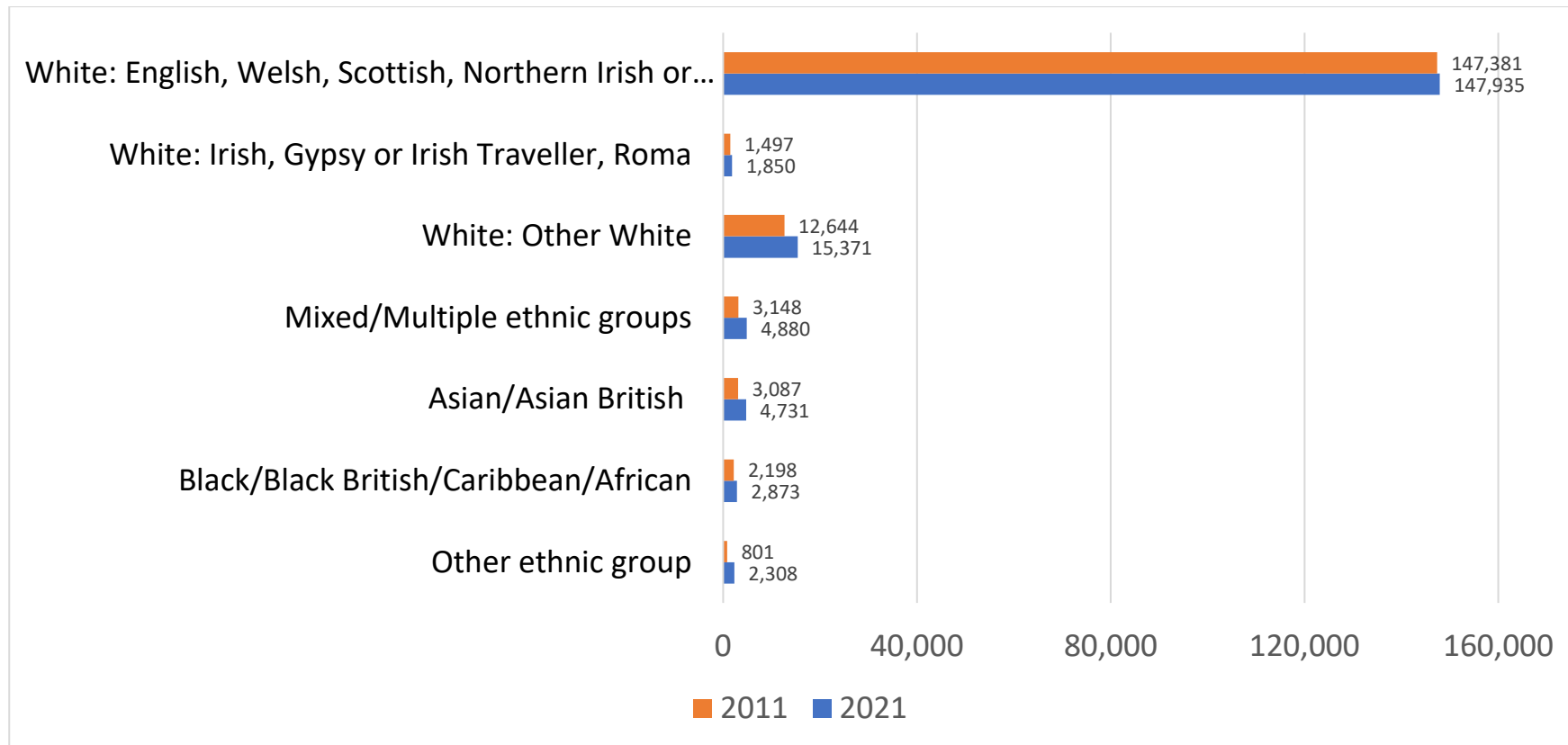


Table 24: Usual resident population by ethnic group in West Suffolk: 2011 and 2021 censuses, percentage

	2011				2021			
	West Suffolk Persons	West Suffolk percentage (%)	Suffolk %	England and Wales %	West Suffolk Persons	West Suffolk %	Suffolk %	England and Wales %
White: English, Welsh, Scottish, Northern Irish or British	147,381	86.3%	90.8%	80.5%	147,935	82.2%	87.3%	74.4%
White: Irish, Gypsy or Irish Traveller, Roma	1,497	0.9%	0.6%	1.0%	1,850	1.0%	0.8%	1.1%
White: Other white	12,644	7.4%	3.8%	4.4%	15,371	8.5%	5.0%	6.2%
Mixed or multiple ethnic groups	3,148	1.8%	1.7%	2.2%	4,880	2.7%	2.3%	2.9%
Asian or Asian British	3,087	1.8%	1.8%	7.5%	4,731	2.6%	2.3%	9.3%
Black, Black British, Caribbean or African	2,198	1.3%	0.9%	3.3%	2,873	1.6%	1.3%	4.0%
Other ethnic group	801	0.5%	0.3%	1.0%	2,308	1.3%	0.9%	2.1%
Total: All usual residents	170,756	100.0%	100.0%	100.0%	100,000	100.0%	100.0%	100.0%

- West Suffolk’s population remains less diverse than that of England and Wales overall.
- At the time of the 2021 census, there were 147,935 White English, Welsh, Scottish, Northern Irish or British usually resident in West Suffolk, 82.2 per cent of the district’s population. Across England and Wales as a whole, 74.4 per cent of the population is White English, Welsh, Scottish, Northern Irish or British.
- The percentage of the West Suffolk population that are not White English, Welsh, Scottish, Northern Irish or British has increased from 13.7 per cent in 2011 to 17.8 per cent in 2021, but remains less than the England and Wales figure of 25.6 per cent. It is however more than the figure of 12.7 per cent for Suffolk.
- White Irish, Gypsy or Irish Traveller and Roma communities account for a similar proportion of the population in West Suffolk (1 per cent) to across England and Wales (1.1 per cent) as a whole and Suffolk (0.8 per cent).
- The Asian or Asian British and Black, African, Caribbean or Black British ethnic groups in particular represent a much smaller

proportion of the West Suffolk population than nationally, 4.2 per cent compared to 13.3 per cent for England and Wales.

- Around 1 in 38 people in West Suffolk is Asian or Asian British, compared to 1 in 11 in England and Wales.
- The proportion of the population of England and Wales that is Black, African, Caribbean or Black British (4.0 per cent) is about 2.5 times higher than in West Suffolk (1.6 per cent).
- 1 in 12 West Suffolk residents on Census Day 2021 were other White, compared to 1 in 20 in Suffolk and 1 in 16 in England and Wales.
- Other ethnic groups account for around 1 in 70 West Suffolk residents, 1 in 100 Suffolk residents and 1 in 50 people nationwide.

Table 25: Usual resident population by ethnic group in West Suffolk: 2011 and 2021 censuses, percentage

	West Suffolk				Suffolk	England and Wales
	2011	2021	Change	Percentage change (%)	Percentage change (%)	Percentage change (%)
White: English, Welsh, Scottish, Northern Irish or British	147,381	147,935	554	0.4%	0.4%	-1.7%
White: Irish, Gypsy or Irish Traveller, Roma	1,497	1,850	353	23.6%	35.3%	14.9%
White: Other white	12,644	15,371	2,727	21.6%	39.4%	47.5%
Mixed or multiple ethnic groups	3,148	4,880	1,732	55.0%	42.8%	40.3%
Asian or Asian British	3,087	4,731	1,644	53.3%	33.1%	30.9%
Black, Black British, Caribbean or African	2,198	2,873	675	30.7%	48.4%	29.2%
Other ethnic group	801	2,308	1,507	188.1%	177.2%	122.7%
Total: All usual residents	170,756	179,948	9,192	5.4%	4.5%	6.3%

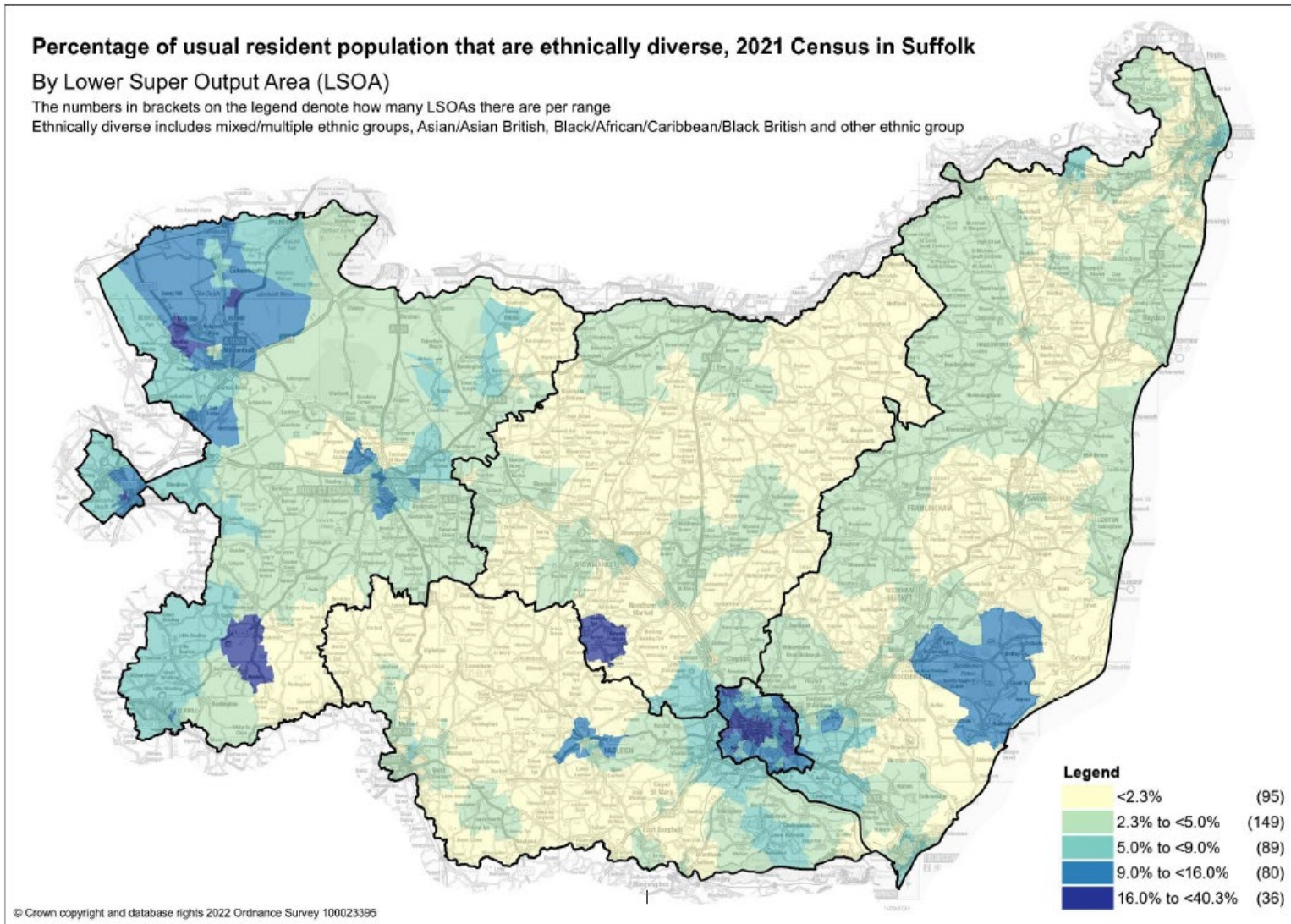
- The usual resident population of every ethnic group in West Suffolk has increased from 2011 to 2021.
- The largest population increase over the past decade was in the other white group. There were 15,371 Other White people resident in West Suffolk in 2021; 2,727 more than in 2011. This group accounts for nearly a third of the total population increase in West Suffolk over the past decade.
- Other White residents now make up 8.5 per cent of West Suffolk's population, an increase of 1.1 percentage points since 2011.
- The largest percentage increase of any ethnic group was among the 'other ethnic group' population. The West Suffolk population in this group more than doubled from 2011 to 2021.

Ethnic group -USVF

Table 26: Percentage of population by ethnic group in Suffolk’s districts and boroughs, Census 2021

	Babergh	East Suffolk	Ipswich	Mid Suffolk	West Suffolk	Suffolk	England and Wales
White: English, Welsh, Scottish, Northern Irish or British	93.6%	92.1%	74.6%	94.0%	82.2%	87.3%	74.4%
White: Irish, Gypsy or Irish Traveller, Roma	0.6%	0.5%	1.2%	0.5%	1.0%	0.8%	1.1%
White: Other white	2.5%	2.5%	8.6%	2.3%	8.5%	5.0%	6.2%
Mixed or multiple ethnic groups	1.5%	1.5%	4.6%	1.4%	2.7%	2.3%	2.9%
Asian or Asian British	0.9%	1.4%	5.5%	0.8%	2.6%	2.3%	9.3%
Black, Black British, Caribbean or African	0.5%	0.6%	3.5%	0.5%	1.6%	1.3%	4.0%
Other ethnic group	0.4%	0.4%	2.1%	0.4%	1.3%	0.9%	2.1%

- West Suffolk’s other White population (15,371) is higher than that of Ipswich (11,943) West Suffolk also has a higher proportion of other ethnic groups than the other predominantly rural Districts in Suffolk. The United States Air Force (USAF) population in the area is a key reason for this.
- The map on the following page shows the percentage of the population that are ethnically diverse (mixed or multiple ethnic groups, Asian, Asian British, Black, African, Caribbean or Black British and other ethnic groups). The impact of military personnel on the ethnic diversity of Suffolk’s population is clear; Lakenheath, Mildenhall, Honington, Sutton Heath and Wattisham all show higher percentages of ethnically diverse people.



The impact of military personnel on the ethnic diversity of West Suffolk's (and Suffolk's) population is clear.

Lakenheath, Mildenhall, Honington, Sutton Heath and Wattisham all show higher percentages of ethnically diverse people.

HMP Highpoint is the other cause of greater ethnic diversity.