

General Rubbish (Black) Bin

Most things that don't go in the recycling bins can go in the Black Rubbish Bin.



Broken crockery



Food pouches



Nappies



Pet waste



Vacuum dust and sweepings



Broken toys



Polystyrene



Sheet glass



Glassware and Pyrex

For other items not listed, please check the FAQ booklet or visit suffolkrecycling.org.uk



We can only collect rubbish contained in the bin.

You can take extra waste to a recycling centre or put it in the bin for the next collection.



We can't empty the bin if the lid is open. Please make sure the lid is closed.

NEVER PUT ANY BATTERY IN ANY BIN

WARNING! Batteries of any kind, including vapes, should **NEVER** go in the recycling or rubbish bins as they are a fire hazard. Take them to a recycling centre or battery recycling point located in most supermarkets and electrical retailers.

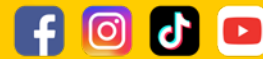


Watch the video!

We've made a short film about the new recycling services. Scan the QR code to watch or visit suffolkrecycling.org.uk



The new recycling and waste service is designed to make it easier for us all to recycle more. Recycling reduces energy, cuts emissions and preserves natural resources. Recycling is also cheaper than disposal so it benefits the economy too. To find out more about recycling and other waste reduction measures, please visit: suffolkrecycling.org.uk



You can keep up to date by following us on social media; search for [@suffolkrecycles](https://www.instagram.com/suffolkrecycles)

Get in touch! If you have any questions or need assistance, please get in touch. We can also provide information in different formats, such as large print, audio, Braille and in different languages.

West Suffolk Council

01284 757320
customer.services@westsuffolk.gov.uk
www.westsuffolk.gov.uk

Suffolk recycles

This leaflet has been designed and produced by mobiusagency.org.uk, printed sustainably in Suffolk by Kingfisher Press on paper made from 75% recycled pulp and 25% virgin pulp sourced from sustainable forests where a minimum of three new trees are planted for every one felled. The inks used are vegetable oil based and production adheres to ISO14001 environmental accreditation. Please recycle it when you're done with it.



Suffolk recycles

Better Recycling

IS COMING TO WEST SUFFOLK



How to use your new **Recycling and Waste Service**

Starting June 2026

The Blue Bin



Plastic pots, tubs, food trays and thin cover film



Plastic bottles



Plastic bags, film and wrapping



Glass bottles and jars



Drinks cartons (Tetra Pak)



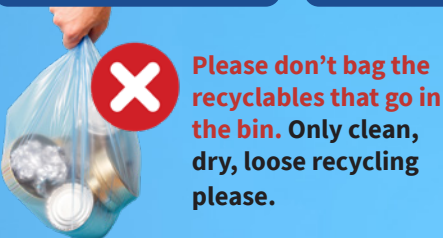
Metal cans and empty aerosols



Tin foil and foil food trays



Some homes may have a sack or box instead of a bin. The same range of items shown here go in them.



Please don't bag the recyclables that go in the bin. Only clean, dry, loose recycling please.

- You can leave labels, lids and nozzles on!
- Please ensure there's no food remnants on or in any of the recyclables.

ONLY the items listed above must go in the Blue Bin. If you include other things, we may not be able to empty it.

The Green-Lidded Bin



Cardboard boxes (please flatten first)



Letters, envelopes and other paper

You can leave the transparent windows in envelopes attached.



Books - hardback and softback



Newspapers and magazines



Cardboard packaging



Shredded paper (wrapped in paper)



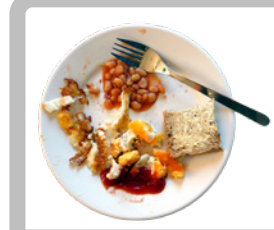
Some homes may have a green lidded-box or disposable sacks instead of a bin. The same range of items shown here go in them.



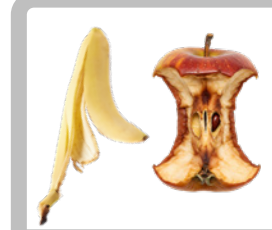
Sorry but we can't collect paper or cardboard that contains remnants of food waste, oil or grease. Put any food waste in the food waste caddies and the spoiled paper or cardboard in the black rubbish bin.

ONLY the items listed above must go in the Green- Lidded Bin. If you include other things, we may not be able to empty it.

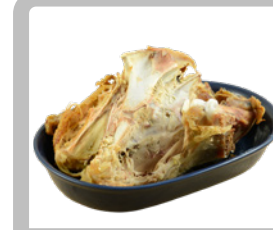
The Food Waste Caddies



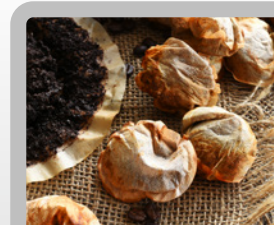
Leftovers



Fruit and veg; peelings and cores



Meat, fish & bones; cooked or uncooked



Coffee grounds and tea bags



Egg shells, cheese and salad



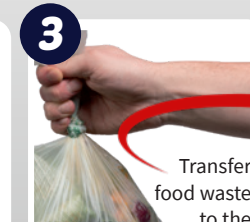
Out of date / mouldy food



1 We recommend lining the smaller caddy. Liners can be purchased from supermarkets but you can use carrier bags if you prefer (but not black bags).



2 Keep the small caddy inside to store food waste during the day.



3 Transfer food waste to the larger caddy kept outside.



4 Pull the handle forward until it clicks to secure the lid. Place the larger caddy out for collection with the other bins.



No packaging of any kind, no oils, liquid fats, milk or other liquids go in the caddies.