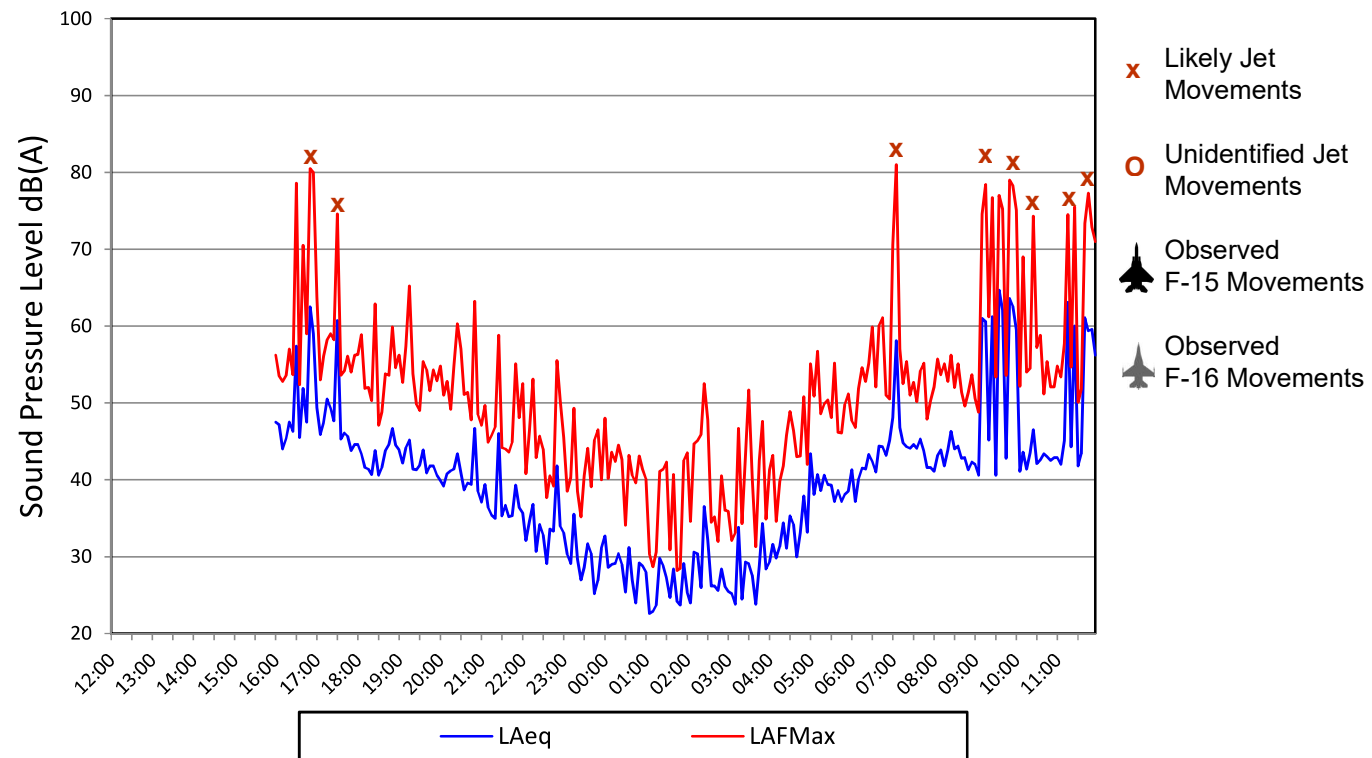


RAF Lakenheath

Environmental Noise Time History: Postion 1

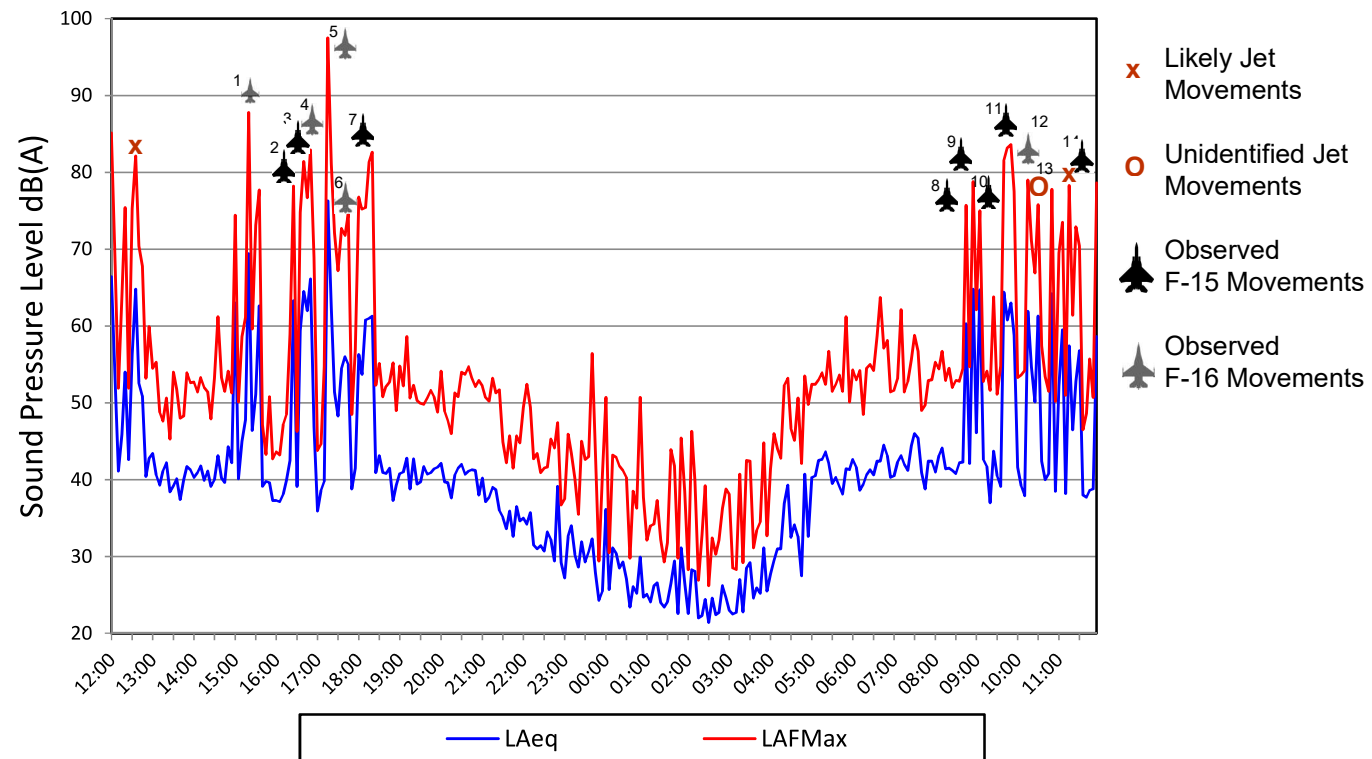


Monday 30 July to Tuesday 31 July 2018

Figure AS10201/TH1

RAF Lakenheath

Environmental Noise Time History: Postion 1

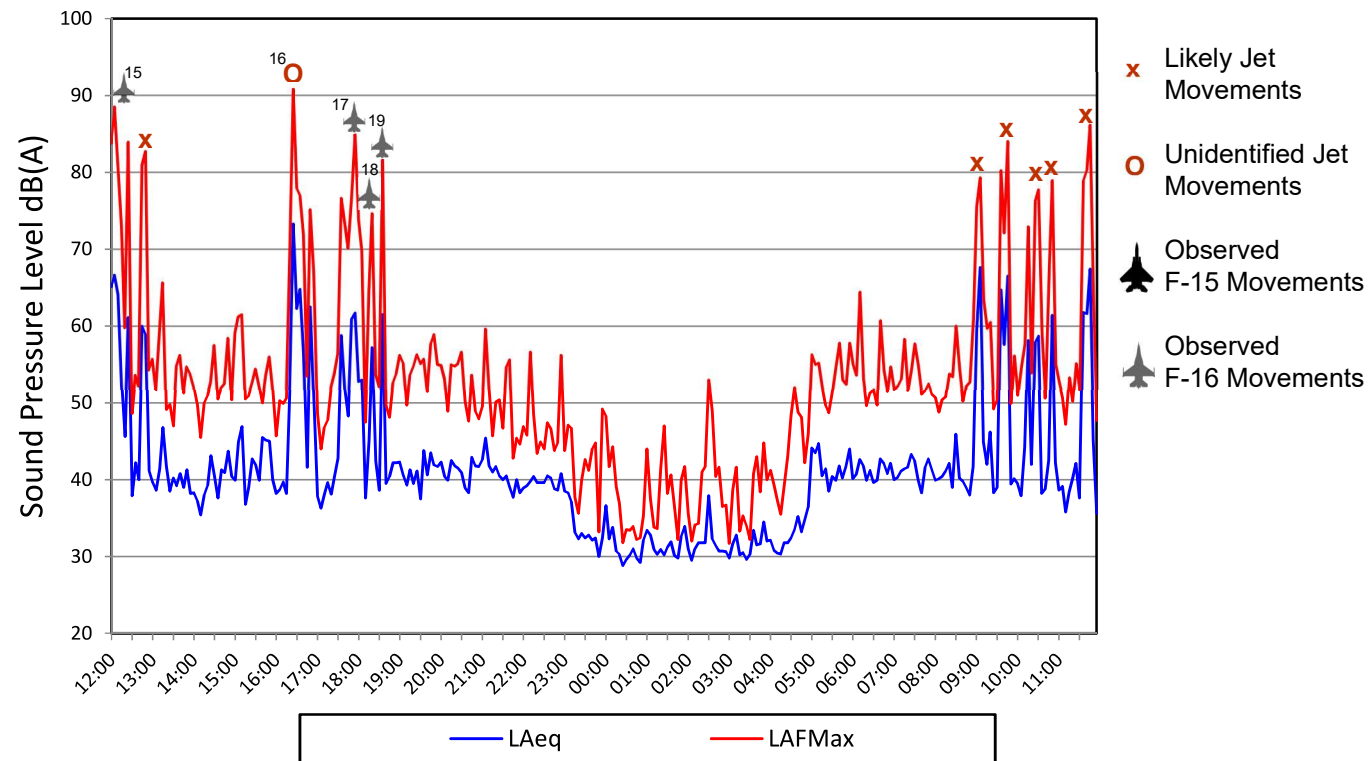


Tuesday 31 July 2018 to Wednesday 01 August 2018

Figure AS10201/TH2

RAF Lakenheath

Environmental Noise Time History: Postion 1

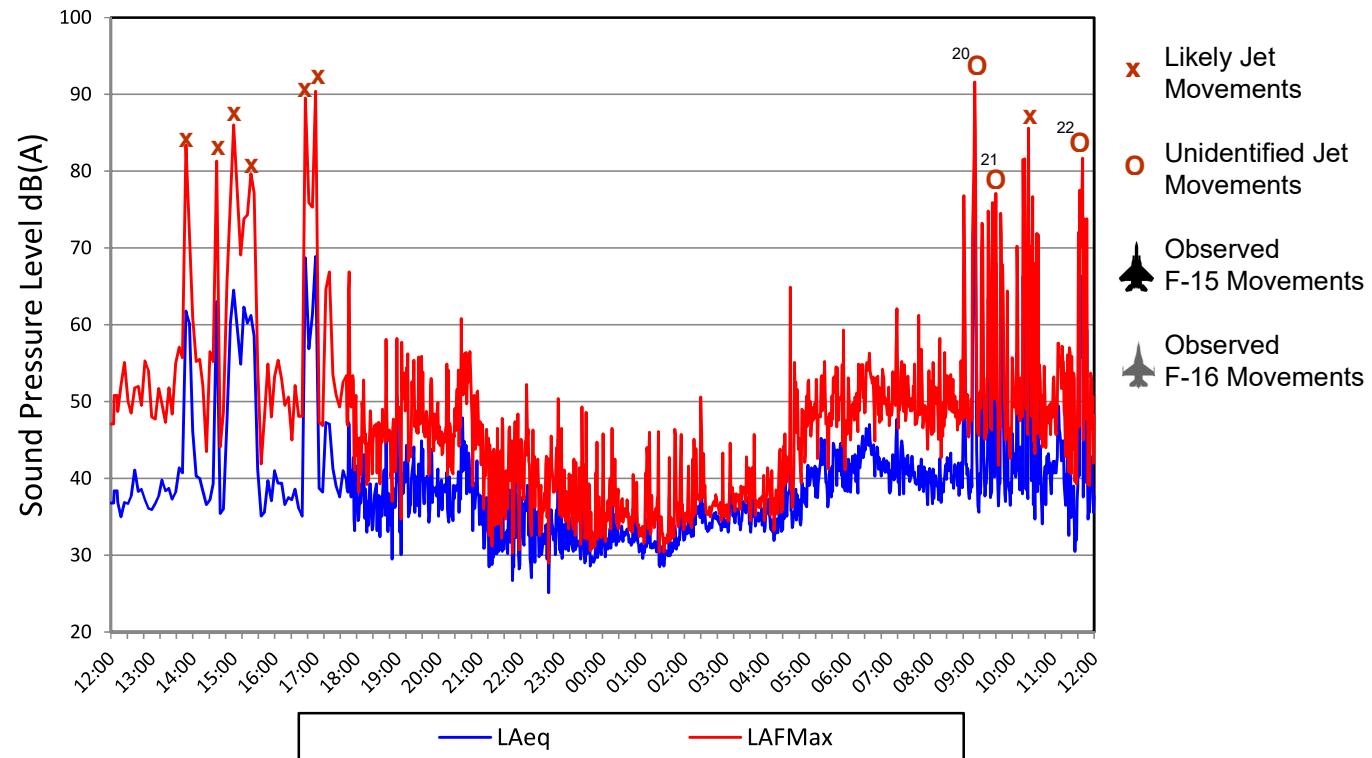


Wednesday 01 August 2018 to Thursday 02 August 2018

Figure AS10201/TH3

RAF Lakenheath

Environmental Noise Time History: Postion 1

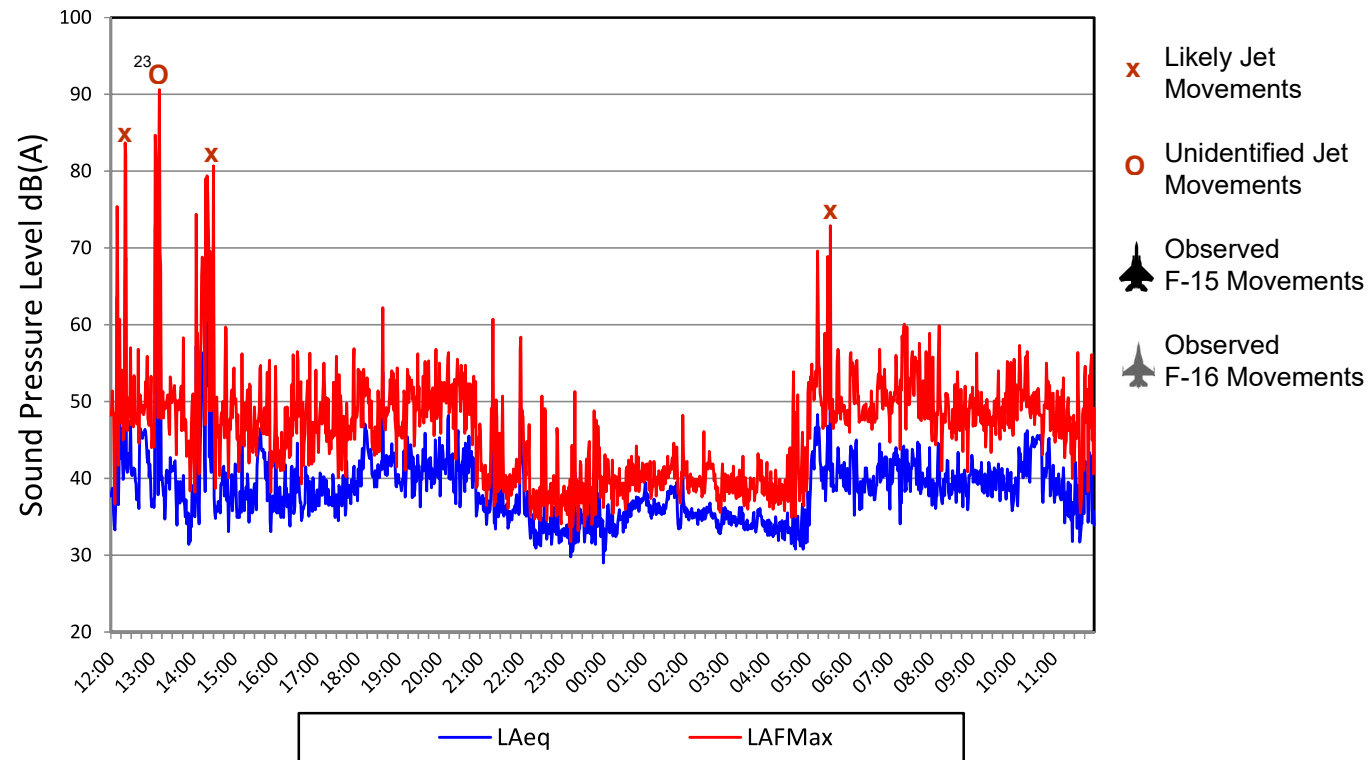


Thursday 02 August to Friday 03 August 2018

Figure AS10201/TH4

RAF Lakenheath

Environmental Noise Time History: Postion 1

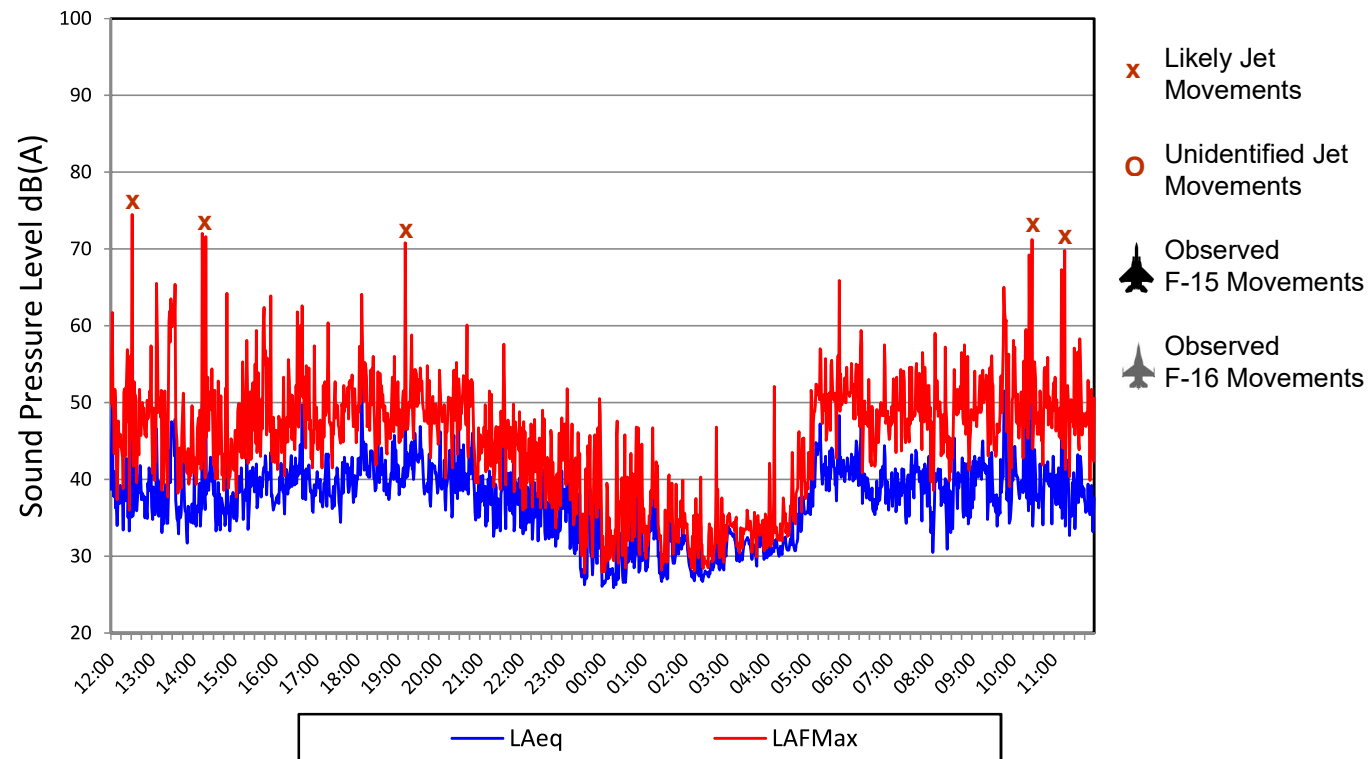


Friday 03 August 2018 to Saturday 04 August 2018

Figure AS10201/TH5

RAF Lakenheath

Environmental Noise Time History: Postion 1

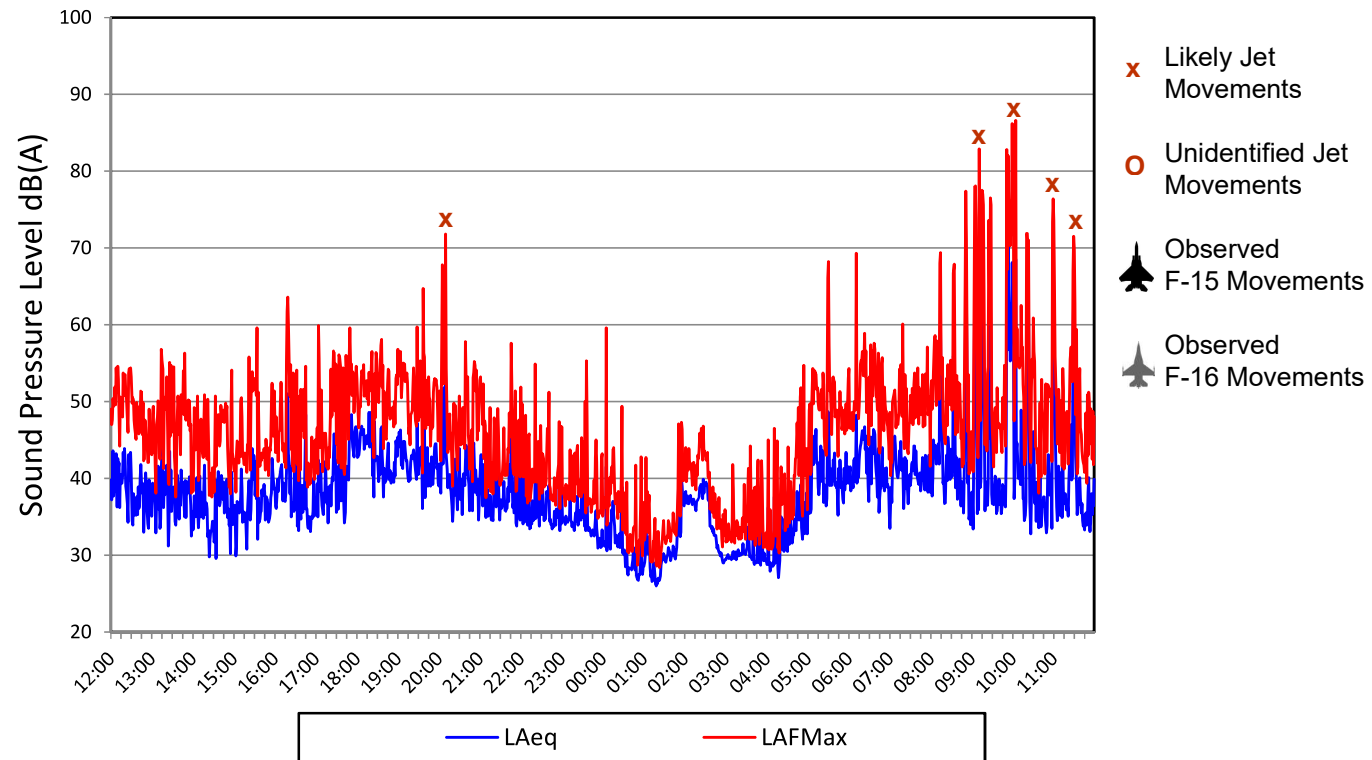


Saturday 04 August 2018 to Sunday 05 August 2018

Figure AS10201/TH6

RAF Lakenheath

Environmental Noise Time History: Postion 1

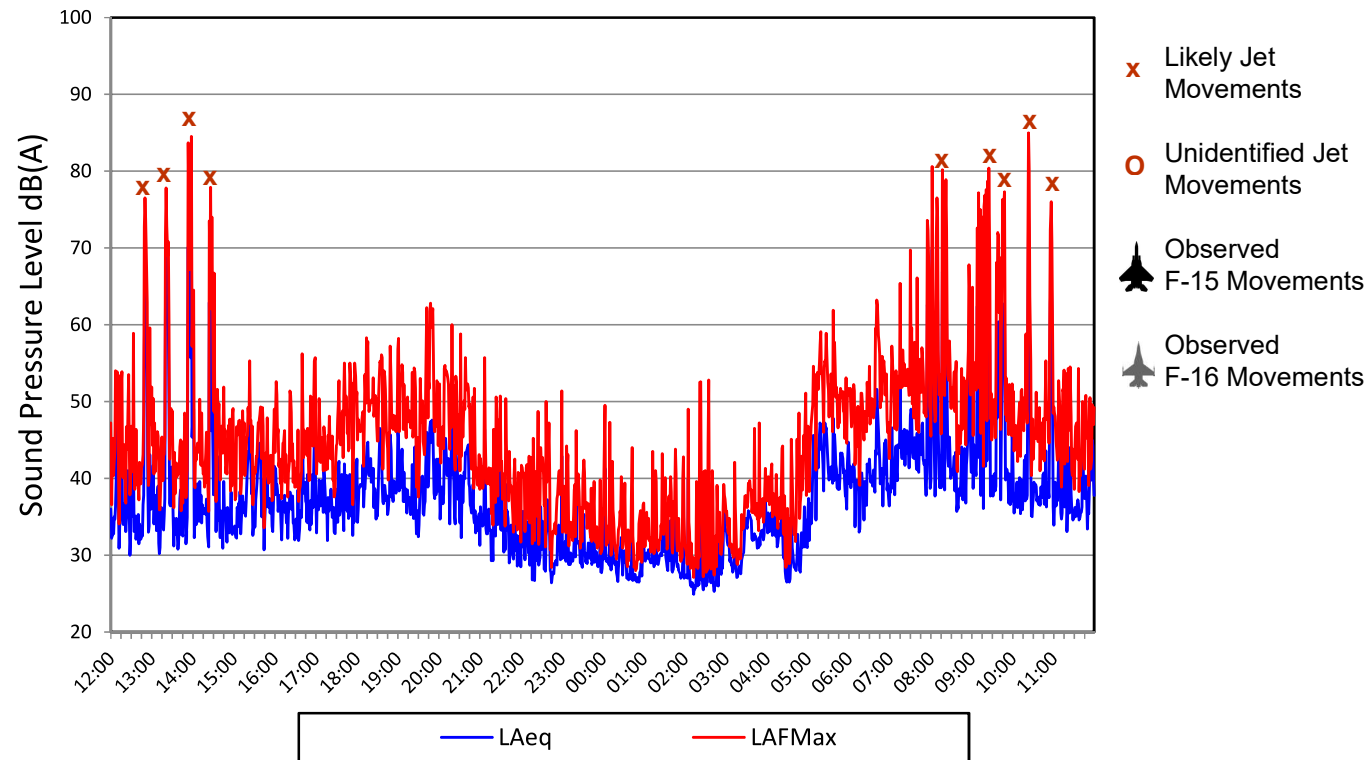


Sunday 05 August 2018 to Monday 06 August 2018

Figure AS10201/TH7

RAF Lakenheath

Environmental Noise Time History: Postion 1

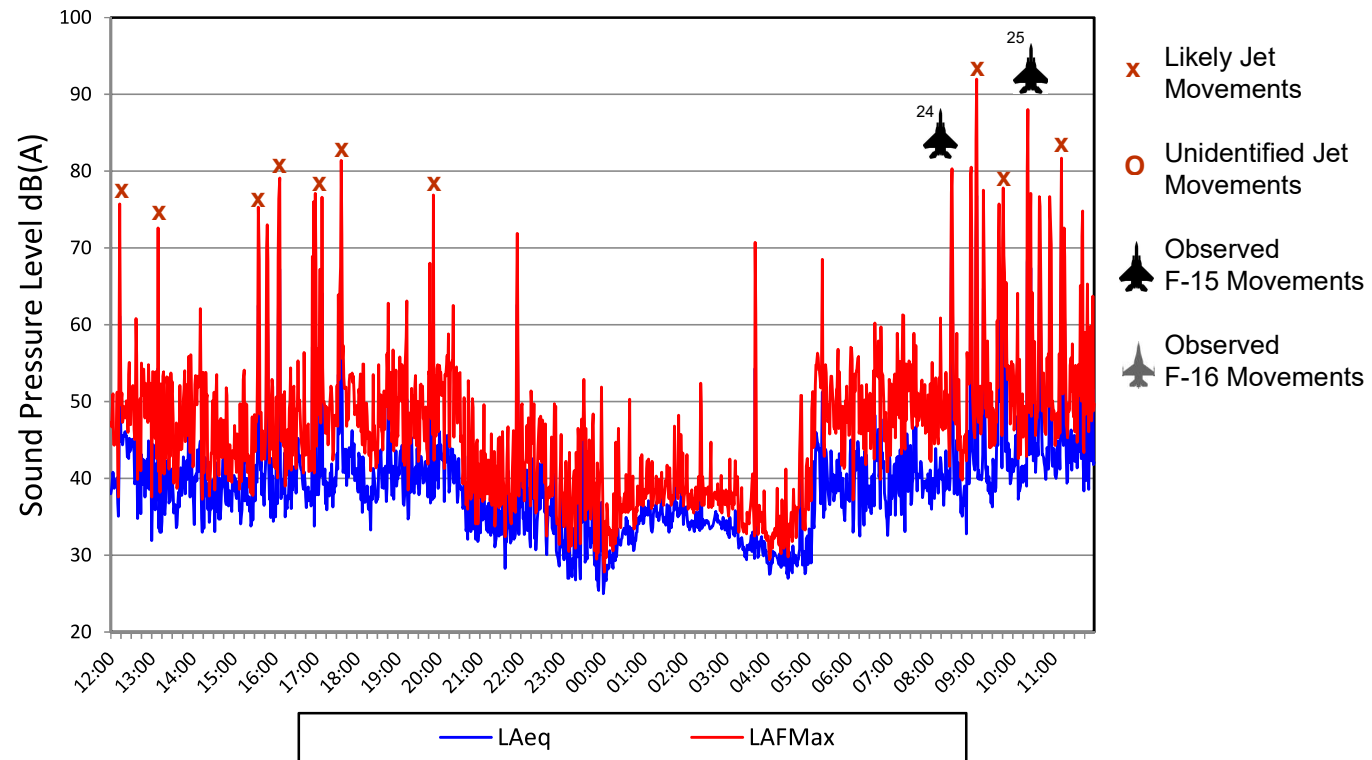


Monday 06 August 2018 to Tuesday 07 August 2018

Figure AS10201/TH8

RAF Lakenheath

Environmental Noise Time History: Postion 1

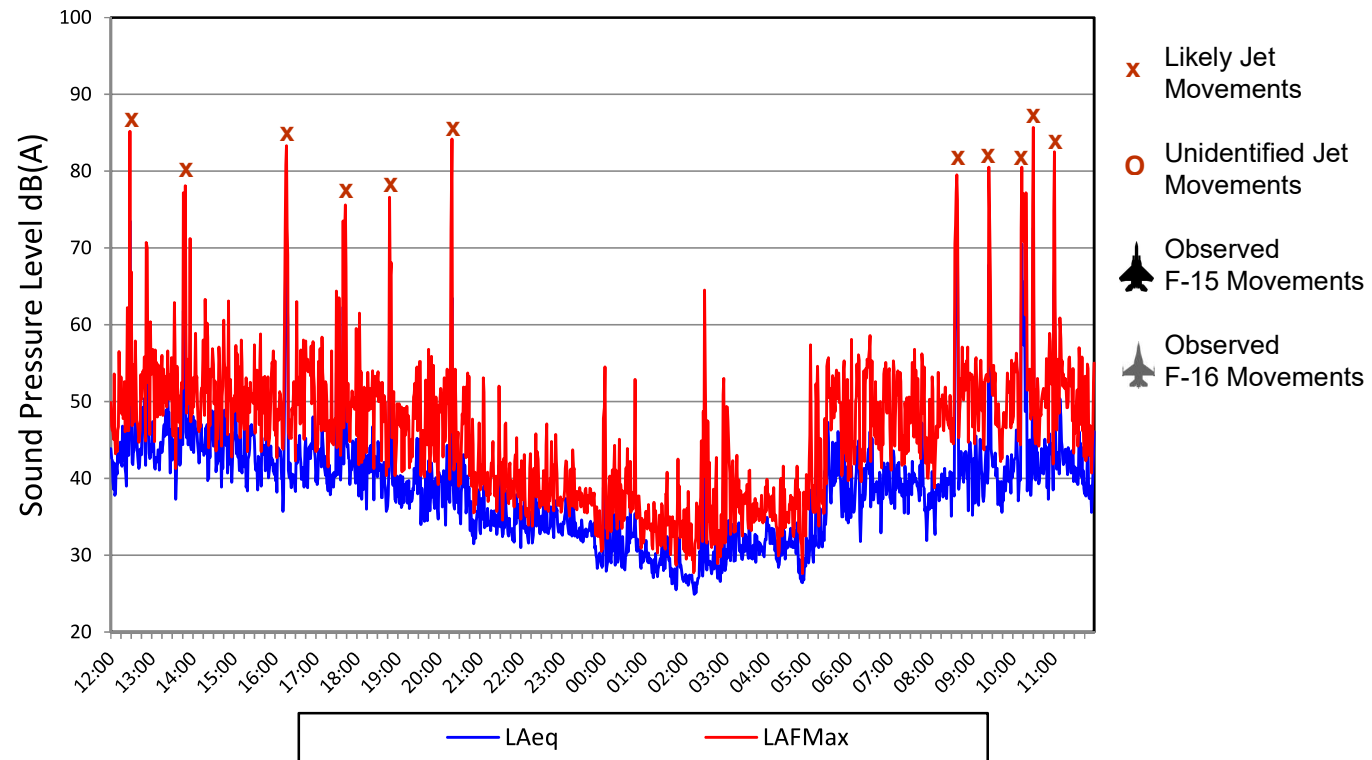


Tuesday 07 August 2018 to Wednesday 08 August 2018

Figure AS10201/TH9

RAF Lakenheath

Environmental Noise Time History: Postion 1

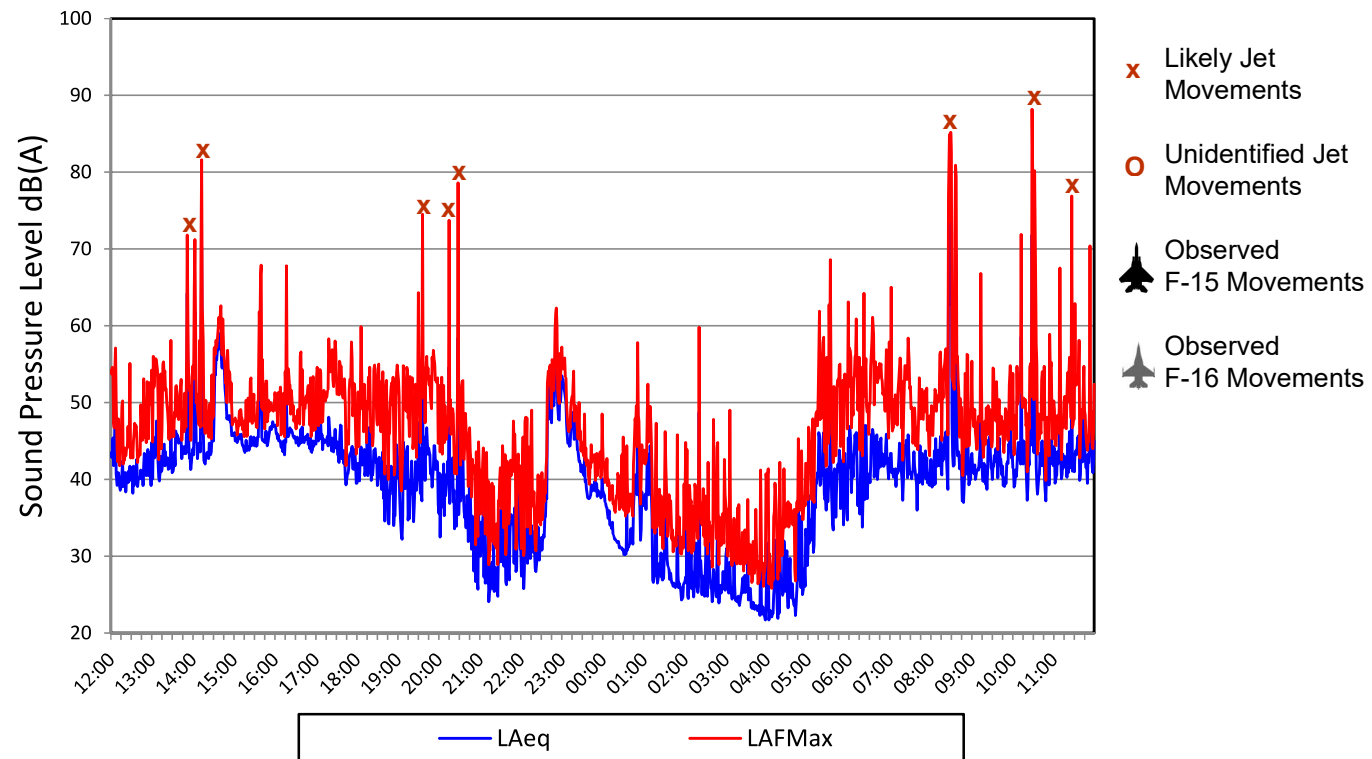


Wednesday 08 August 2018 to Thursday 09 August 2018

Figure AS10201/TH10

RAF Lakenheath

Environmental Noise Time History: Postion 1

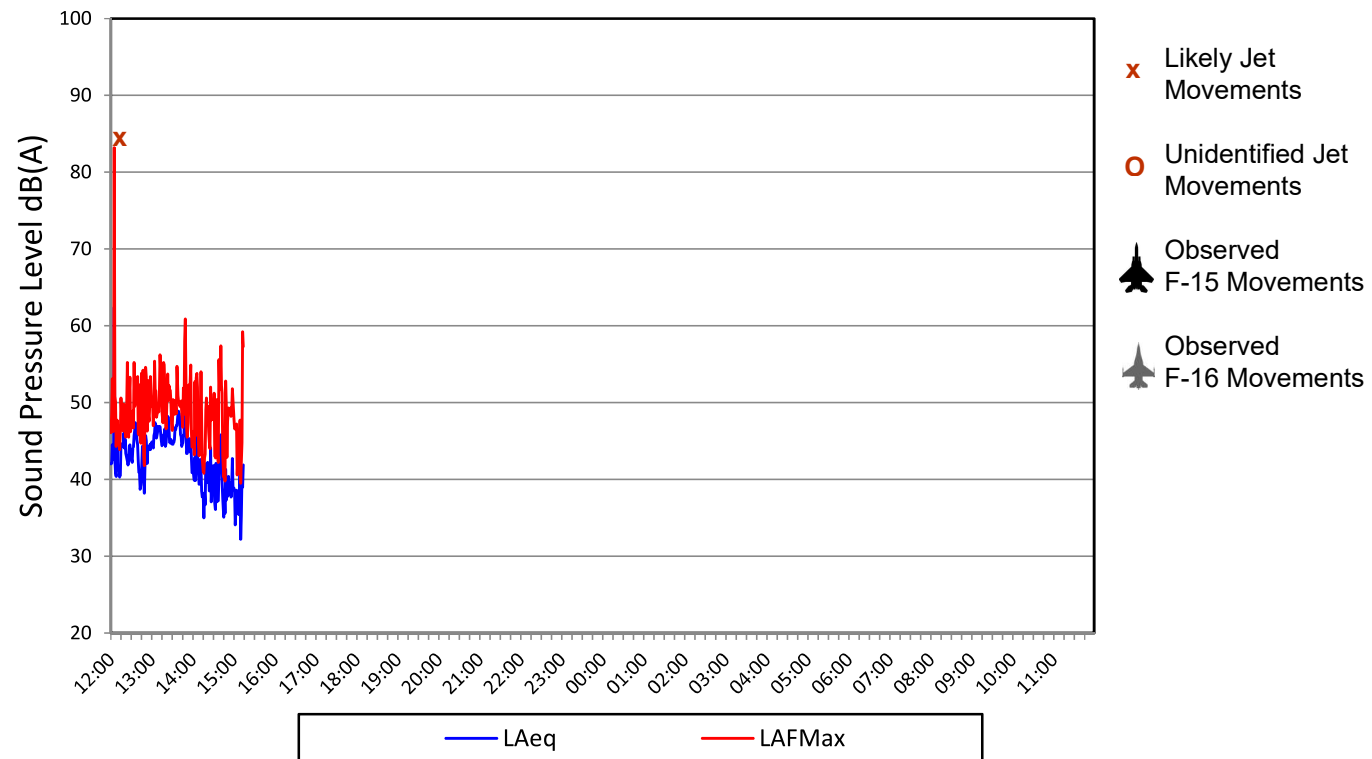


Thursday 09 August 2018 to Friday 10 August 2018

Figure AS10201/TH11

RAF Lakenheath

Environmental Noise Time History: Postion 1



Friday 10 August 2018 to Saturday 11 August 2018

Figure AS10201/TH12

Graph Ref.	Date	Time	F15	F16	Mvmt Dir.	Comments
1	31-Jul	1521	-	1	NE	Fast climb
2	31-Jul	1624	2	-	N	Take-off to normal climb
3	31-Jul	1641	1	-	N	Into cloud
4	31-Jul	1654	-	3	SSE	From Point Charlie-inbound (2x Twin Track)
5	31-Jul	1716	-	2	SSE	From Point Charlie-inbound (Twin Track)
6	31-Jul	1742	-	1	SSE	From Point Charlie-inbound
7	31-Jul	1810	3	-	SSE	From Point Charlie-inbound (2x Twin Track, quickly followed by third)
8	01-Aug	0845	2	-	N	Take-off to normal climb
9	01-Aug	0855	3	-	N	Take-off to normal climb
10	01-Aug	0906	2	-	N	Take-off to normal climb
11	01-Aug	0950	3	-	SSE	Charlie inbound & base circuits
12	01-Aug	1018	-	1	W	Outbound
13	01-Aug	1030	???	???	SSE	Inbound then base circuits / touch and go
14	01-Aug	1155	2	-	SSE	From Point Charlie-inbound (Twin Track)
15	01-Aug	1205	-	3	SSE	From Point Charlie-inbound
16	01-Aug	1715	???	???	???	Take-off / outbound F15s/F16s
17	01-Aug	1755	-	2	SSE	From Point Charlie-inbound
18	01-Aug	1820	-	2	SSE	From Point Charlie-inbound
19	01-Aug	1835	-	2	SSE	One jet was off course over to West over the village centre
20	03-Aug	0905	???	???	W	High altitude climb. Major discomfort reported "Extended Afterburners - very high reverberation, about as unpleasant as it gets."
21	03-Aug	0936	???	???	???	???
22	03-Aug	1143	???	???	???	???
23	03-Aug	1311	???	???	N	Take-off
24	08-Aug	0830	~8	-	???	???
25	08-Aug	1026	2	-	SSE	From Point Charlie-inbound (Twin Track) Wide Path 1Km apart