

**Town & Country Planning Act 1990 Schedule 4B (as applied by s38 of the Planning and Compulsory Purchase Act 2004) Neighbourhood Planning (General) Regulations 2012**

**Final decision statement for Ixworth and Ixworth Thorpe Neighbourhood Plan**

Ixworth and Ixworth Thorpe Parish Council have prepared a neighbourhood development plan. On 8 May 2025 a referendum was held in the designated neighbourhood area (see plan below), in which more than half of those who voted did so **in favour** of the referendum question:

"Do you want West Suffolk Council to use the neighbourhood plan for Ixworth and Ixworth Thorpe to help it decide planning applications in the neighbourhood area?"

Accordingly, on 15 July 2025 West Suffolk Council decided to '**make**' (adopt) the plan.

**This decision statement confirms that as of 15 July 2025, the Ixworth and Ixworth Thorpe Neighbourhood Plan as 'made' has become part of the statutory development plan for West Suffolk and will be used where relevant to help the council decide planning applications within the designated area, unless material considerations indicate otherwise.**

**Reasons for decision:**

The plan has been independently examined and agreed by both the examiner and West Suffolk Council to meet the basic conditions; it has been endorsed by the community having been subject to a referendum and has otherwise complied with all the legal requirements of neighbourhood plan production. It is considered that the plan meets European legislation and is compatible with the European Convention on Human Rights within the meaning of the Human Rights Act 1998.

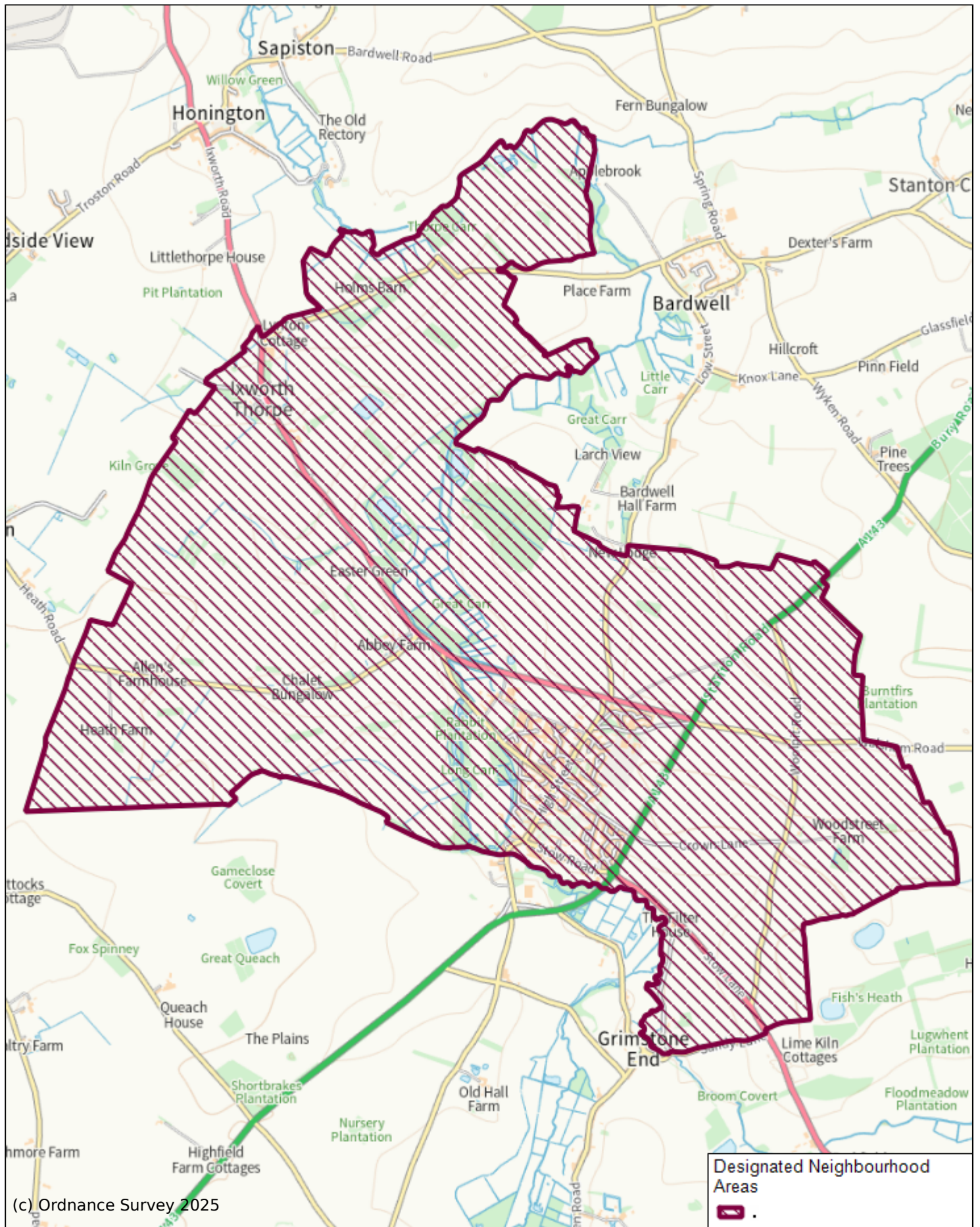
**Availability:**

The Ixworth and Ixworth Thorpe Neighbourhood Plan along with this decision statement and other supporting documents may be inspected on the council's website at [Neighbourhood Planning in Ixworth and Ixworth Thorpe](#)

**Julie Baird Director (Planning and Growth)**

**West Suffolk Council  
16 July 2025**

Please note that all references to primary and secondary legislation are to those enactments as amended.



## Ixworth and Ixworth Thorpe Neighbourhood Area

Scale: 1:30000

Printed on 2025-07-14 14:08:45

by dbugg@SEBC\_DOMAIN

© Crown Copyright and database rights 2025 OS 100023282.

**West Suffolk**  
Council



West Suffolk House  
Western Way  
Bury St Edmunds  
IP33 3YU  
01284 763233  
[www.westsuffolk.gov.uk](http://www.westsuffolk.gov.uk)