

Ixworth and Ixworth Thorpe Neighbourhood Plan information statement

Town & Country Planning Act 1990 Schedule 4B (as varied by s38A & 38C of the Town and Country Planning Act) Neighbourhood Planning (Referendums) Regulations 2012 (as amended)

A referendum relating to the Ixworth and Ixworth Thorpe Neighbourhood Plan will be held on **Thursday 8 May 2025**.

The question to be asked at the referendum is: **Do you want West Suffolk Council to use the neighbourhood plan for Ixworth and Ixworth Thorpe to help it decide planning applications in the neighbourhood area?**

The **referendum area** is identical to the area which has been designated as the Ixworth and Ixworth Thorpe Neighbourhood Plan Area. See below.

The **persons entitled to vote in the referendum** are those who:

- Are entitled to vote in an election of a councillor to West Suffolk Council.
- Have a qualifying address for the election in the referendum area.

The referendum expenses limit that will apply in relation to the referendum is £2463.42 has been calculated on the basis of 1719 electors.

The referendum will be conducted in accordance with procedures similar to those used at local government elections.

The specified documents may be seen:

- online at [Neighbourhood Planning in Ixworth and Ixworth Thorpe](#)
- The documents are available for inspection at office hours in the following locations:
 - West Suffolk House, Western Way, Bury St Edmunds IP33 3YU
 - Mildenhall Hub, Sheldrick Way, Mildenhall Suffolk IP28 7JX

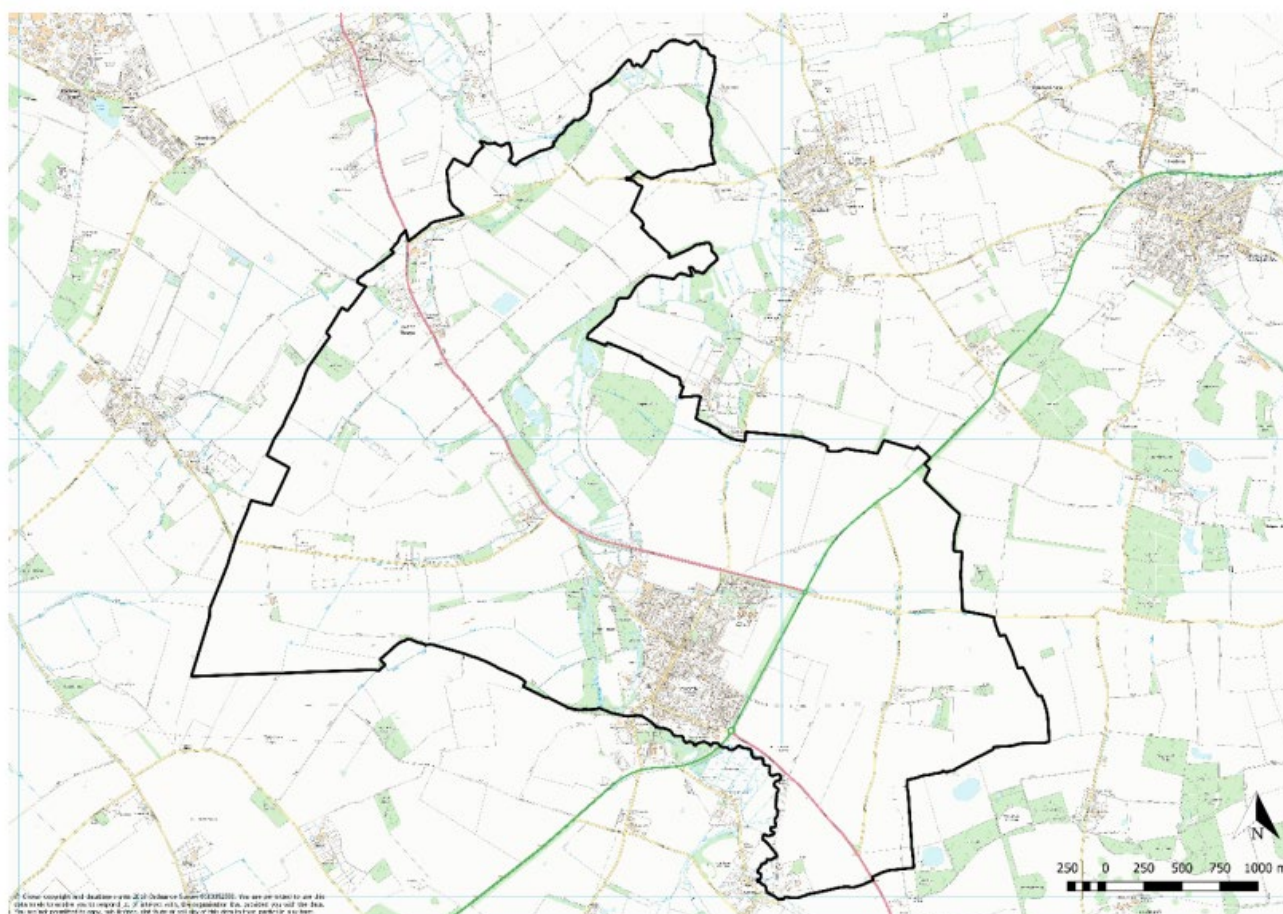
The specified documents are:

- [Ixworth and Ixworth Thorpe Neighbourhood Plan \(referendum version\)](#)
- [Ixworth and Ixworth Thorpe Neighbourhood Plan – examiners report 13 January 2025](#)
- [Ixworth and Ixworth Thorpe Neighbourhood Plan Regulation 16 consultation responses](#)

- [Ixworth and Ixworth Thorpe Neighbourhood Plan - post examination decision statement](#)
- [Ixworth and Ixworth Thorpe Neighbourhood Plan \(referendum version\) – compliance check \(3 March 2025\)](#)

Further general information on neighbourhood planning is available at www.westsuffolk.gov.uk/neighbourhoodplanning

Please note that all references to primary and secondary legislation are to those enactments as amended.



Map 1: Boundary of the Neighbourhood Plan Area

For queries regarding the referendum please contact elections@westsuffolk.gov.uk

Ian Gallin
Counting Officer West Suffolk Council
24 March 2025