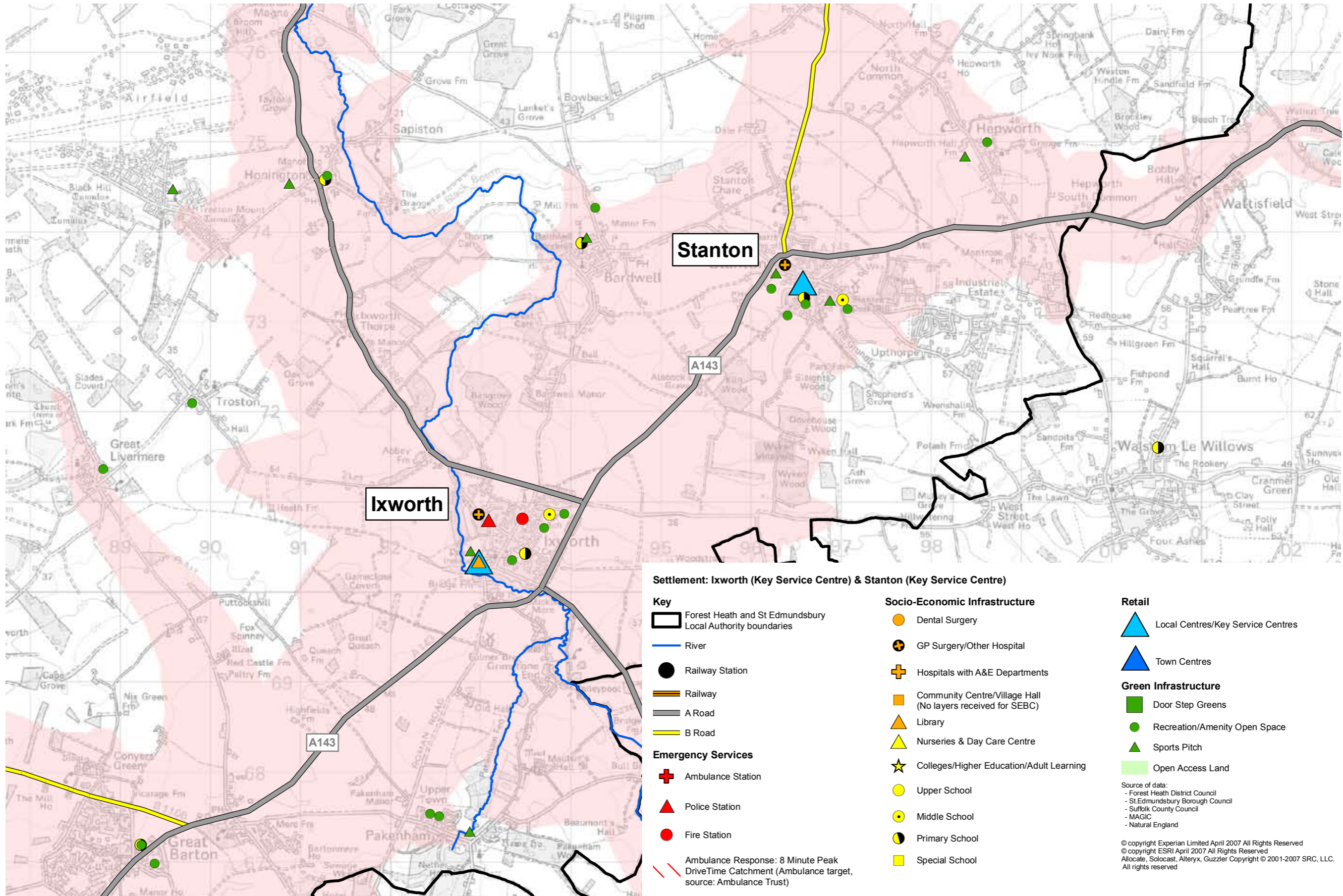
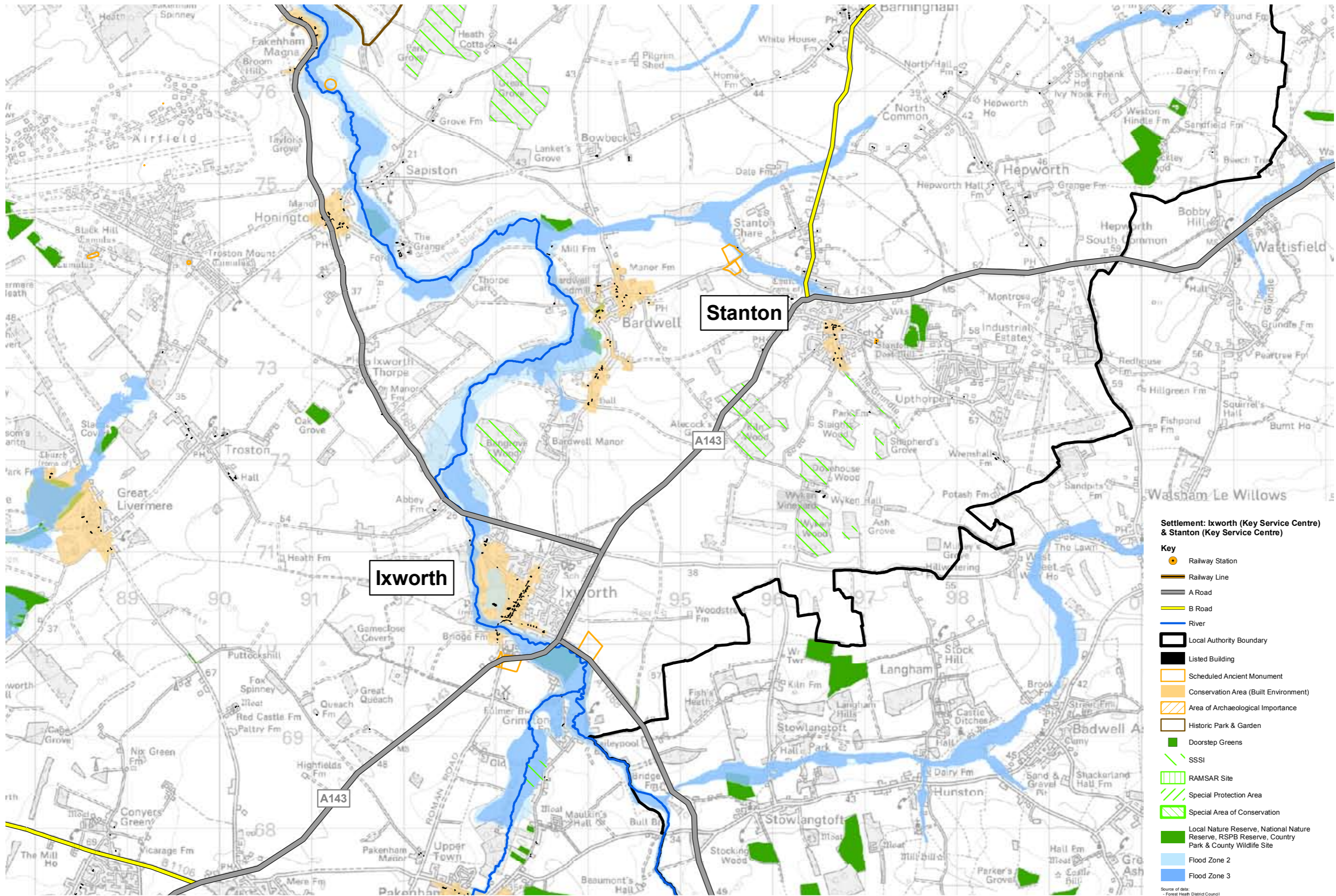

7. IXWORTH AND STANTON



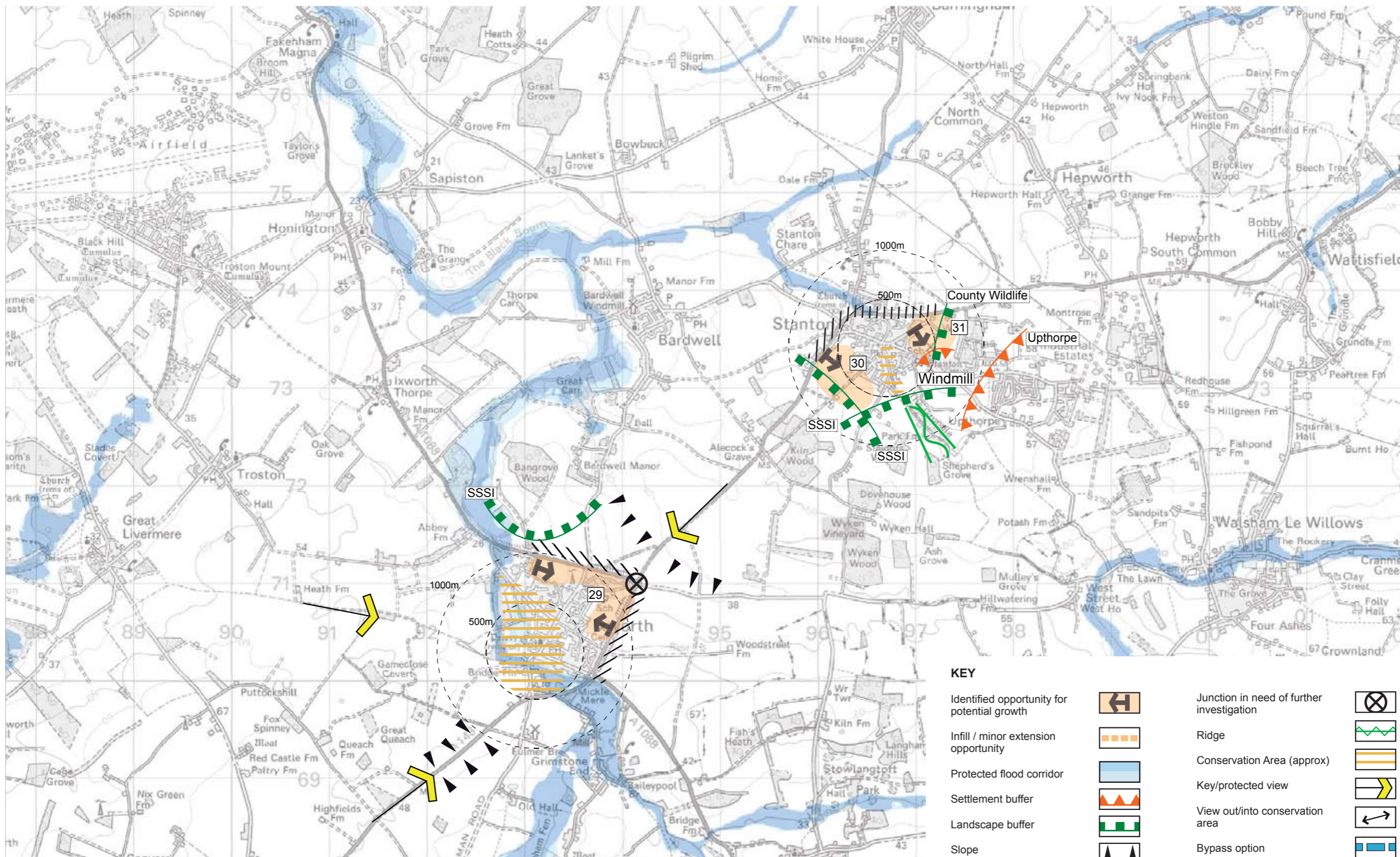


Settlement: Ixworth (Key Service Centre) & Stanton (Key Service Centre)

Key

- Railway Station
- Railway Line
- A Road
- B Road
- River
- Local Authority Boundary
- Listed Building
- Scheduled Ancient Monument
- Conservation Area (Built Environment)
- Area of Archaeological Importance
- Historic Park & Garden
- Doorstep Greens
- SSSI
- RAMSAR Site
- Special Protection Area
- Special Area of Conservation
- Local Nature Reserve, National Nature Reserve, RSPB Reserve, Country Park & County Wildlife Site
- Flood Zone 2
- Flood Zone 3

Source of data:
 - Forest Heath District Council
 - St Edmundsbury Borough Council
 - Suffolk County Council
 - MAGIC
 - Natural England
 - English Heritage
 - Environment Agency



KEY

Identified opportunity for potential growth		Junction in need of further investigation	
Infill / minor extension opportunity		Ridge	
Protected flood corridor		Conservation Area (approx)	
Settlement buffer		Key/protected view	
Landscape buffer		View out/into conservation area	
Slope		Bypass option	
Green corridor		Key infrastructure relevant to growth (see inset map)	
Need for new boundary to settlement		Open Access Land	
Existing defensible boundary to settlement		Walking Catchments	