

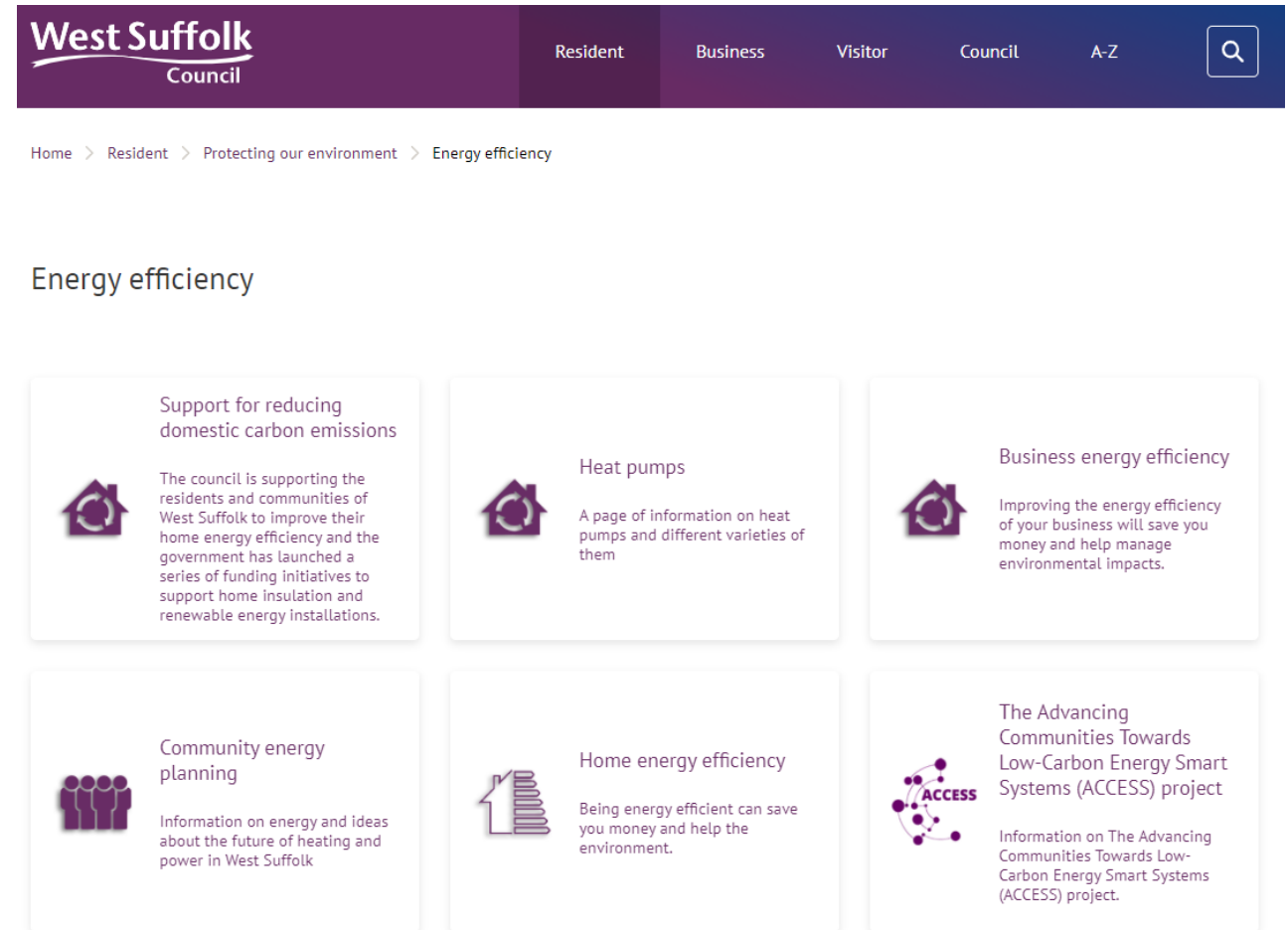
Home energy efficiency and heat pumps



Andrew Oswald, Oliver Ingwall-King and Luke Simpkin
Environment and Energy Team

West Suffolk Council - introduction

- Net Zero Emissions Commitment
 - Reduce council emissions to net zero by 2030
 - Focusing on the themes of transport, buildings and renewable energy
- The council has installed heat pumps and solar PV at
 - West Suffolk House and Apex
 - West Stow
 - Bardwell Sports Pavilion
 - Mildenhall Hub



West Suffolk Council

Resident Business Visitor Council A-Z

Home > Resident > Protecting our environment > Energy efficiency

Energy efficiency

- Support for reducing domestic carbon emissions**
The council is supporting the residents and communities of West Suffolk to improve their home energy efficiency and the government has launched a series of funding initiatives to support home insulation and renewable energy installations.
- Heat pumps**
A page of information on heat pumps and different varieties of them
- Business energy efficiency**
Improving the energy efficiency of your business will save you money and help manage environmental impacts.
- Community energy planning**
Information on energy and ideas about the future of heating and power in West Suffolk
- Home energy efficiency**
Being energy efficient can save you money and help the environment.
- The Advancing Communities Towards Low-Carbon Energy Smart Systems (ACCESS) project**
Information on The Advancing Communities Towards Low-Carbon Energy Smart Systems (ACCESS) project.

Support for residents

- Advice and information
- Warmer Homes- first time central heating
- Insulation schemes
- Solar Together
- Advice on electric vehicles
- 0% Energy Saving Loan

And funding options and support for communities and businesses

The screenshot shows the Suffolk Council website. At the top, the Suffolk logo is displayed with the tagline 'Creating the Greenest County'. A navigation menu includes Home, Events, News, Contact Us, and About. A search bar is located below the menu. A vertical sidebar on the left contains several green buttons for navigation: Flooding, Climate Ready?, Plug in Suffolk, Wildlife & Landscape, At Home, At Work, At School, Suffolk Recycling, Greener Travel, and Green Buildings. The main content area features a large banner for 'Plug in Suffolk' with an image of an electric car charging station and the text 'The UK's first fully open fast charging network'. Below the banner is a 'Read more' button. A news section below the banner features a headline 'Solar Together Suffolk is back for a third round!' dated 2 September 2020, with a small 'Solar Together' logo. The news text states: 'Since 2018, we have installed solar panel systems in over 800 households across Suffolk. On average, homeowners have saved £2,000 on installation costs, £140 each year on energy bills and stopped harmful carbon emissions entering the atmosphere – equivalent to a car driving 3,500 miles each year.'

www.greensuffolk.org

Search...

Go

Flooding

Climate Ready?

Plug in Suffolk

Natural Solutions

At Home

Energy

Recycling

Water

Carbon Footprint

At Work

At School

Suffolk Recycling

Greener Travel

[At Home](#) » [Energy](#) » Loans for Energy Efficiency

Loans for Energy Efficiency

Suffolk Greener Homes % Loan scheme

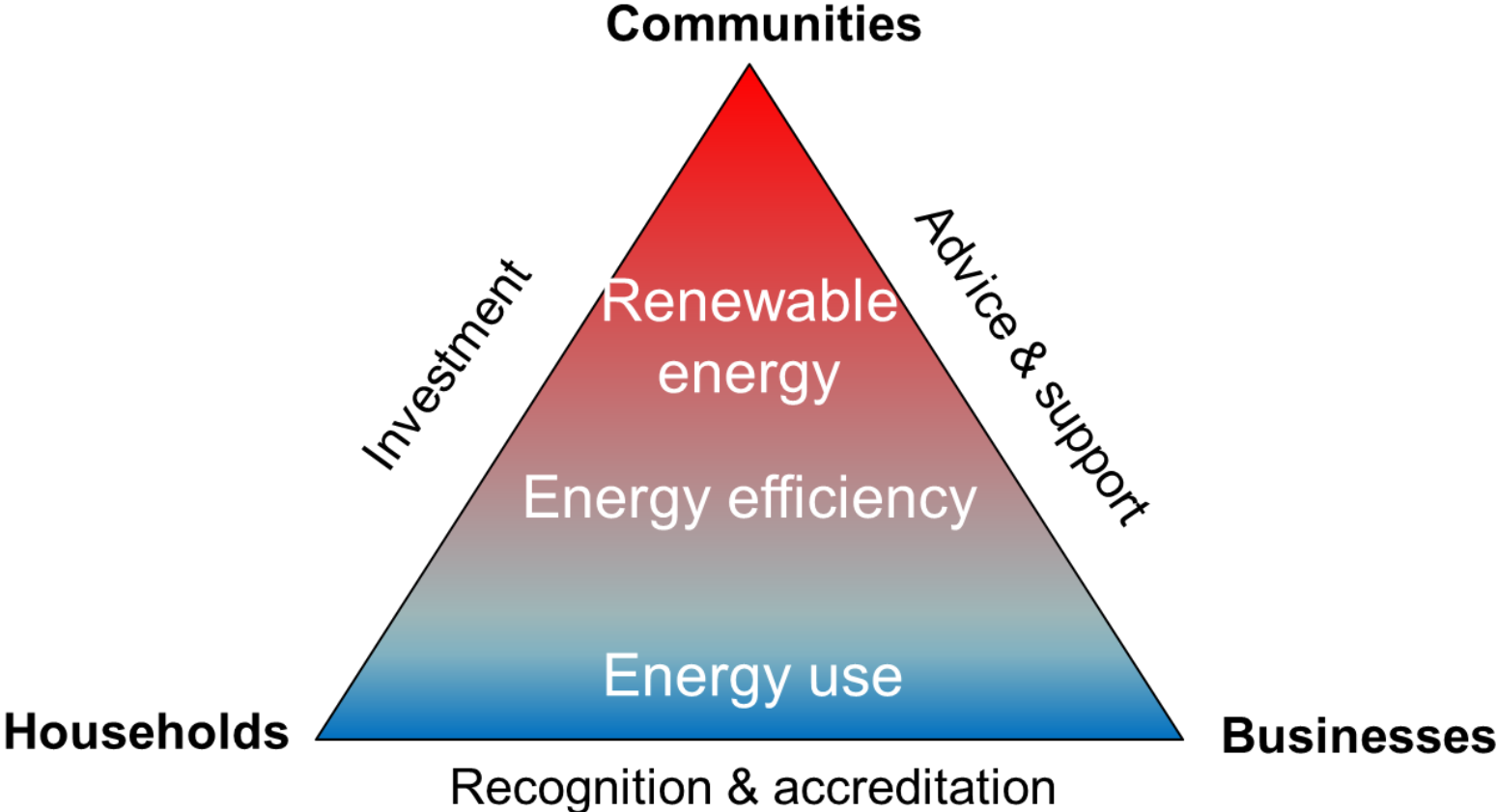
The Greener Homes Loan Scheme offers loans of up to £5,000 at 0% APR to help homes cut their energy use. Loans are available for energy saving measures such as insulation, boiler upgrades and renewable energy systems. Loans are only available for the installation of approved materials and technologies by accredited installers.

There are two types of loan available. Short term loans (2 to 12 months) of up to £1,000 for smaller improvements such as insulation, and long term loans (1 to 3 years) of up to £5,000 for more expensive measures such as renewable projects.

The following measures will typically be supported:

- Solar PV panels and associated efficiency equipment (immersion switches, battery storage)
- Solar thermal
- Air source heat pumps
- Ground source heat pumps
- Domestic wind turbine
- Biomass boiler
- LED lighting
- Loft and floor insulation, cavity wall fill, internal and external solid wall insulation
- Draught-proofing
- Double and triple glazing
- Electric vehicles and charging points
- Water conservation measures (e.g. rainwater harvesting)

The energy hierarchy



Insulation First



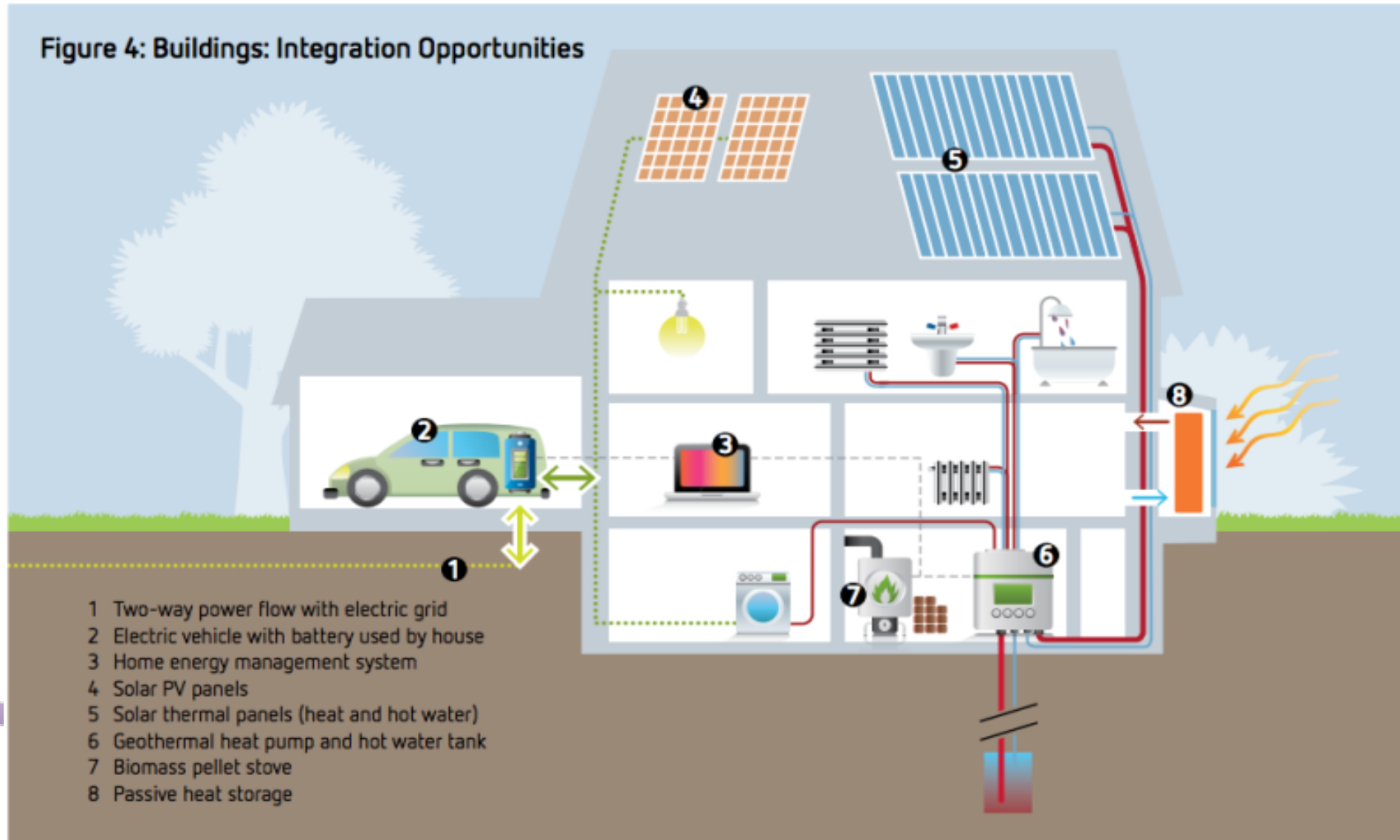
West Suffolk

Insulation measures



Range of suitable technologies

Figure 4: Buildings: Integration Opportunities



Green Homes Grant

- The Government have announced a new £2 billion scheme to help homeowners across England improve the energy efficiency of their homes. Households will be able to apply for the Green Homes Grant in September 2020 and it will run until March 2021.
- For most people, the grant will cover two-thirds of the cost up to a maximum of £5,000. For homeowners on lower incomes, the scheme could give you free energy-efficient measures up to a value of £10,000.
- The grant covers insulation measures such as solid wall, cavity wall, under-floor, loft, flat roof, room in roof and park home
- You also have an option to buy a heat pump using the grant. Alternatively, you can buy the hybrid heat pump offer which is already subsidised by EDF
- Homeowners across England will be able to access advice and support on improving the energy efficiency of their homes via the [Simple Energy Advice Service](#)

Renewable heat incentive (RHI)

- Homeowner funds installation of renewable heat technology including heat pumps and solar thermal
- RHI subsidy is paid to residents quarterly for 7 years and should exceed initial capital outlay
- The RHI can be combined with the Green Homes Grant
 - You can claim both the Domestic RHI and the Green Home Grant for a renewable heat installation. You must claim the Green Home Grant voucher first and then notify Ofgem that you have used it when you apply for accreditation to the Domestic RHI. The Green Homes Grant will then be deducted from your Domestic RHI payments.
- There are several local installers who could install a heat pump, here are 3 that have carried out work through council schemes:
 - www.finn-geotherm.co.uk
 - www.eocservices.co.uk/air-source-heat-pumps
 - www.greenscapeenergy.co.uk

Why heat pumps?

Did you know, a typical household using oil heating is estimated to generate the equivalent of 10,000* miles of carbon every year – that's a round road trip between the UK and India.

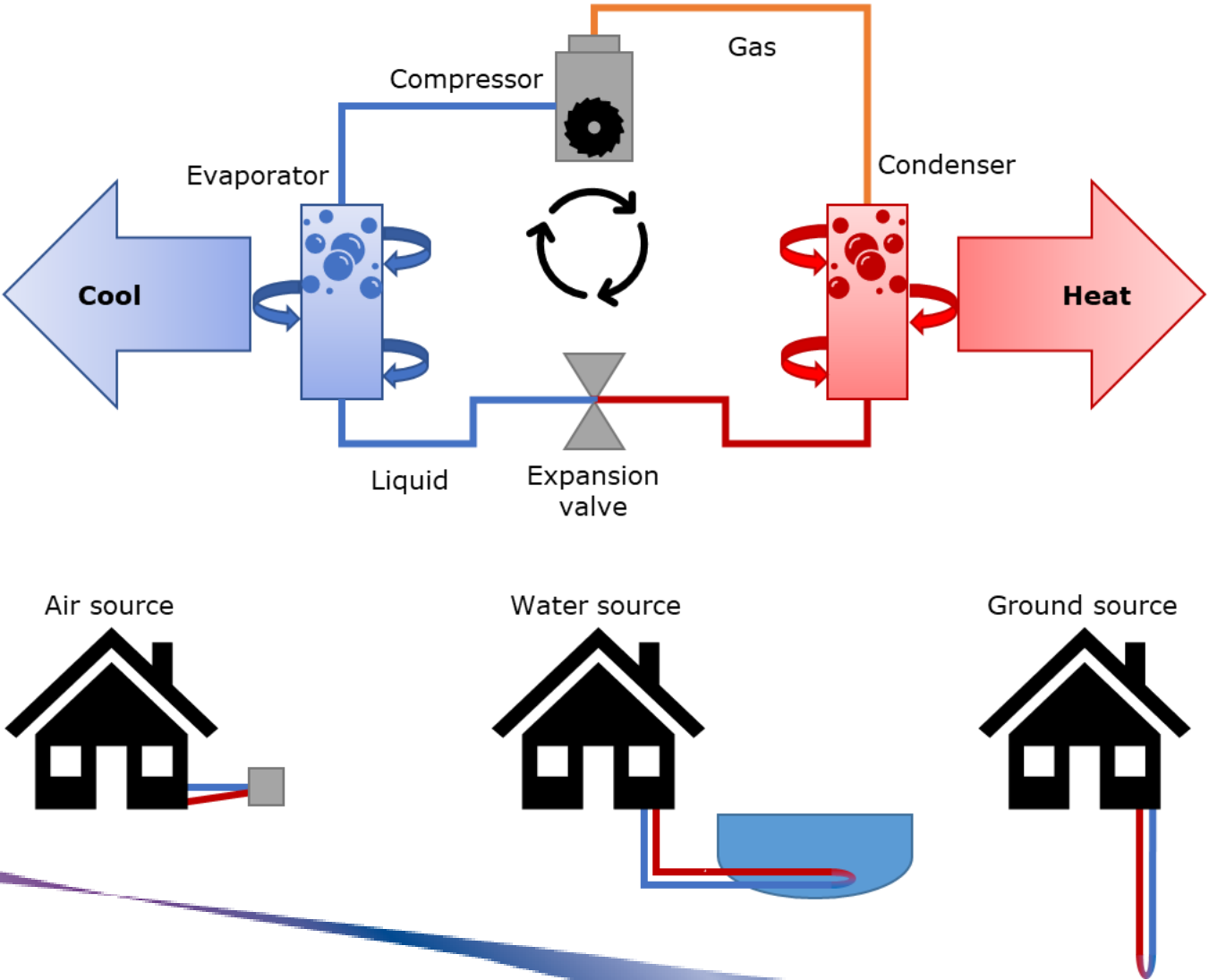
Oil and LPG heating can be expensive and there is always fear of running out of fuel.

Heat pumps are low carbon heating solution that can be up to four times more efficient than an A-rated boiler



*A household consuming 1000 litre of oil every year. Carbon calculated from

Heat pump schematic

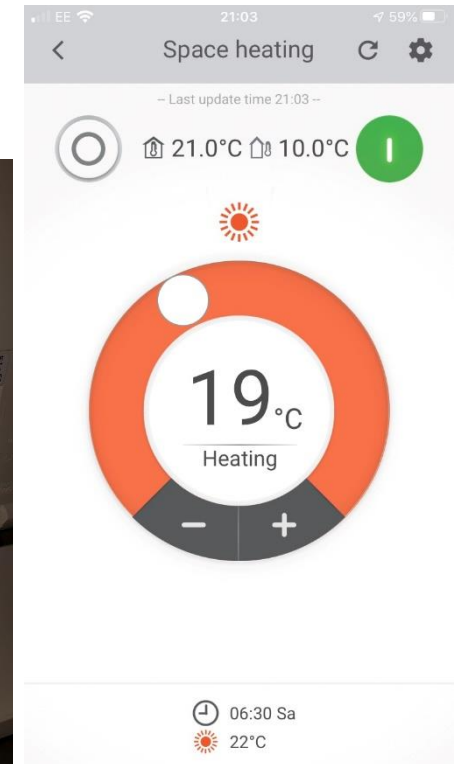
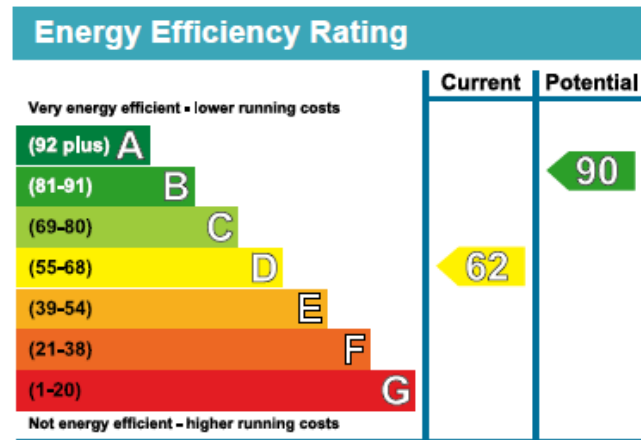


ASHP replace gas boiler



Things you will need

- Floor plan with room areas
- Radiator sizing
- Energy Performance Certificate – kWh
- Electrical supply – 60 Amps / 100 Amps
- Controls



Costs and Savings

- **Costs**

- Electrician £600
- ASHP £8,500
- Additional Controls £250
- **Total £9,350**

- **Savings**

- Replace boiler with TRVs -£5,000
- RHI = £680/year 7 years (£4,760)
- Gas to electric –cost neutral
- **Total £9,760**

EDF Hybrid Heat Pump Offer

- We are participating in a government subsidy scheme (Renewable Heat Incentive) to bring a subsidised heat pump to consumers.
- You will get a state-of-the-art hybrid heat pump that can switch up to 80% of your heat-to-heat pump. The offer includes
 - Heat Pump including installation
 - Smart controls that intelligently switch between your boiler and heat pump
 - Optional 100% renewable tariff starting from 12p per kilowatt hour
- You pay- £1350 over 7 years
 - £399 upfront
 - £14.99 per month for 7 years
- You are eligible for an optional government metering subsidy of £1610

What is a Hybrid Heat Pump?

Link to video introducing domestic hybrid heat pumps

https://youtu.be/ge_69JiiqX8



Hybrid Heat Pump

- Go online to:
<https://www.edfenergy.com/upgrade-to-hybrid>
- Complete the web enquiry form using the link above. Select 'other' when asked where you heard about the scheme and enter 'Westsuffolk' in the field provided.

Getting your hybrid heating system



1. Register your interest

Complete our online form and an expert at PassivSystems will call you back



2. Call-back from our team

If you have the following info to hand it will be really helpful

- How much you pay for your fuel
- How many litres of oil or LPG do you use a year
- What is your annual fuel bill



3. Home survey & proposal

A surveyor will visit your home for a no-obligation survey to assess suitability. You'll receive a free Energy Performance Certificate (EPC), and an offer pack if your house is deemed suitable.



4. Installation & registration

An expert installer will install the hybrid heat pump and smart controls – they'll also show you how to use the smart controls. You'll have to register the system on the government portal for us to receive the government subsidy.

If you're interested in hybrid heating, or just need to find out more about it, fill out the contact form and one of our experts at PassivSystems will be in touch to discuss your options.

Get us to call you

Scheme Eligibility

- Spend at least £800 per year in your heating using Oil or LPG
- Own your home and have some outdoor space
- Have a home internet connection
- Have a working and serviceable existing heating system
- Have loft insulation that's a depth of at least 150mm
- No microbore or underfloor heating
- Meet the scheme criteria (our team at Passivsystems will talk you through this)

Questions and answers

For more information see

www.westsuffolk.gov.uk/protecting-our-environment

Or contact

Environment@westsuffolk.gov.uk